

Sample Information

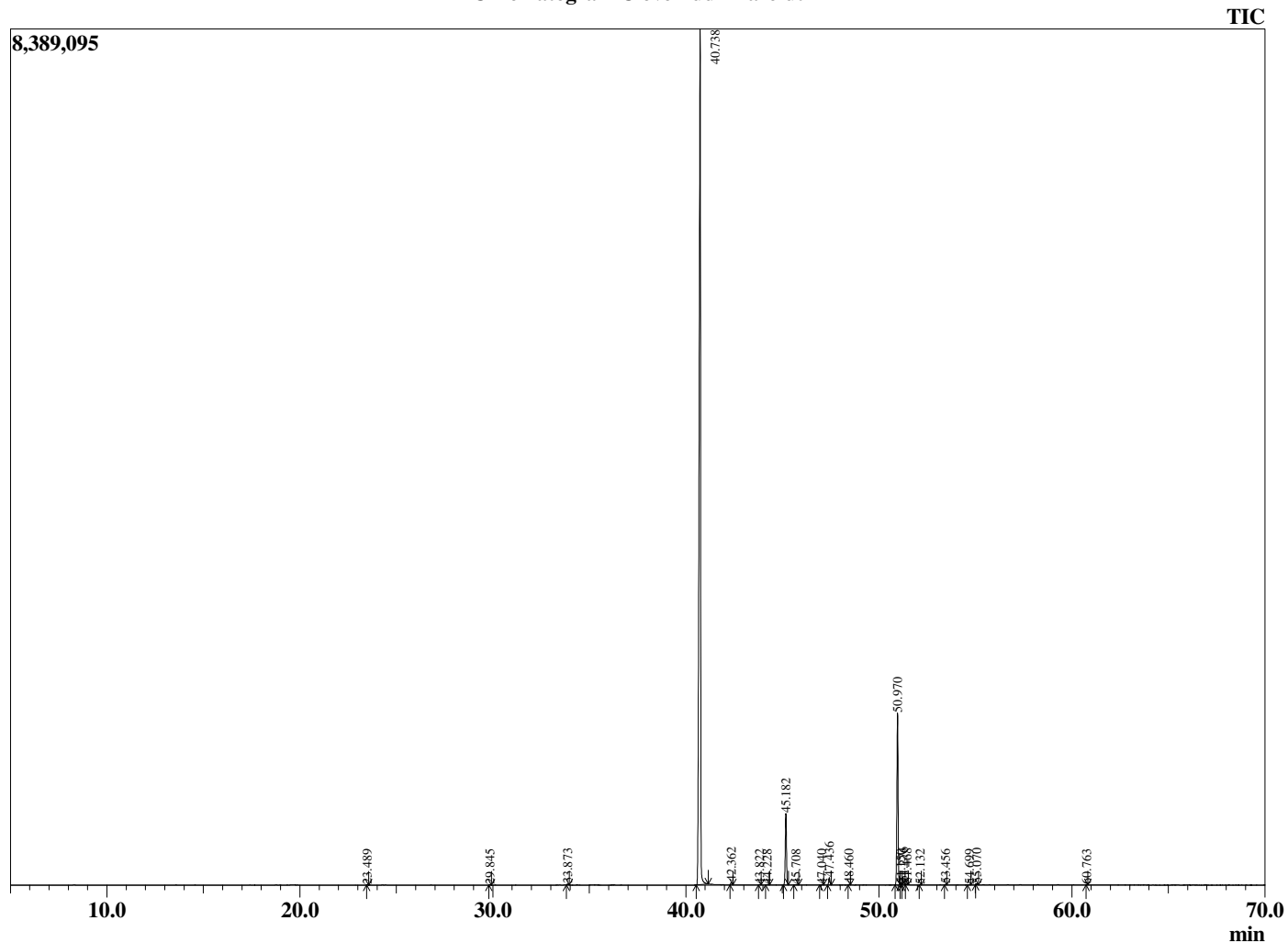
Analyzed by : Dr. Robert S. Pappas  
 Analyzed : 12/12/2019 5:14:18 AM  
 Sample Type : Essential Oil  
 Sample Name : Clove Bud - Barefut  
 Sample ID : 0110  
 Injection Volume : 0.10  
 Instrument ID : GC-3



Peak Report TIC

R.Time	Name	Area%
4.225	3-Methylbutanal	0.01
4.340	2-Methylbutanal	0.01
23.489	Linalool	0.03
29.845	Methyl salicylate	0.03
33.873	Chavicol	0.07
40.738	Eugenol	79.93
42.362	alpha-Copaene	0.20
43.822	Methyleugenol	0.03
44.228	Unidentified	0.03
45.182	beta-Caryophyllene	5.55
45.708	Unidentified	0.03
47.040	Humulen-(v1)	0.03
47.436	alpha-Humulene	0.59
48.460	10-beta-H-Cadina-1(6),4-diene	0.04
50.970	Eugenyl acetate	12.93
51.150	Unidentified	0.04
51.276	delta-Cadinene	0.21
51.468	trans-Calamenene	0.07
52.132	trans-Cadine-1,4-diene	0.02
53.456	Unidentified	0.04
54.699	Caryophyllene alcohol	0.03
55.070	Caryophyllene oxide	0.07
60.763	Unidentified	0.02
		100.00

Chromatogram Clove Bud - Barefut



Comments:

The analysis of this Clove Bud batch sample meets the expected chemical profile for authentic essential oil of *Eugenia caryophyllata*. No contamination or adulteration was detected.

The results provided in this GCMS quality analysis reflect the chemical composition of the oil and lot referenced above on the date of analysis.