

Sample Information

Analyzed by : Dr. Robert S. Pappas  
 Analyzed : 5/7/2019 9:05:20 AM  
 Sample Type : Essential Oil  
 Sample Name : Clove - Barefut  
 Sample ID : 0109  
 Injection Volume : 0.10  
 Instrument ID : GC-3

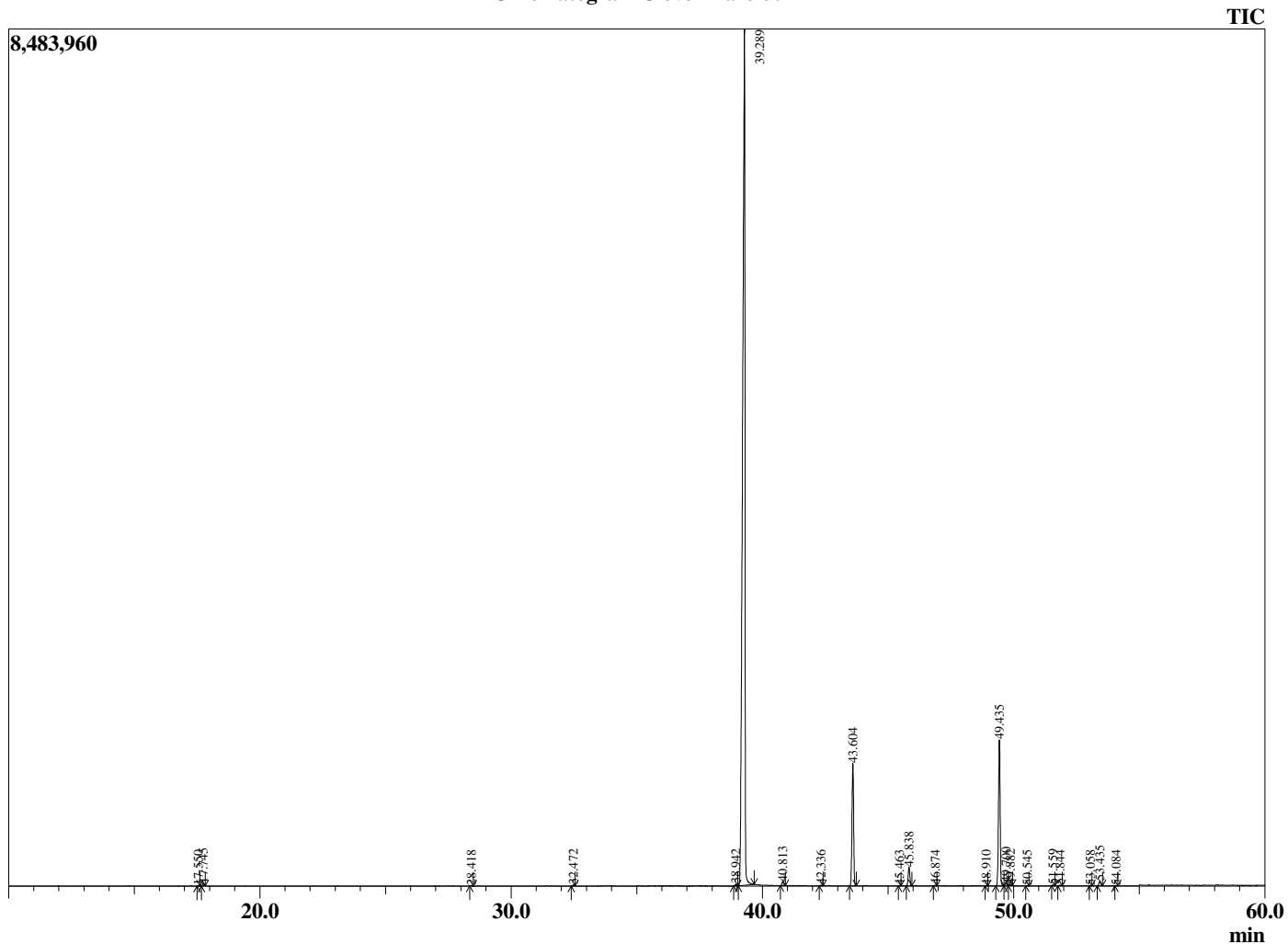


Peak Report TIC

R.Time	Name	Area%
17.550	Limonene	0.03
17.745	1,8-Cineole	0.13
28.418	Methyl salicylate	0.02
32.472	Chavicol	0.05
38.942	alpha-Cubebene	0.11
39.289	Eugenol	79.55
40.813	alpha-Copaene	0.26
42.336	Methyleugenol	0.04
43.604	beta-Caryophyllene	8.01
45.463	Humulen-(v1)	0.02
45.838	alpha-Humulene	1.23
46.874	10-beta-H-Cadina-1(6),4-diene	0.03
48.910	(E,E)-alpha-Farnesene	0.02
49.435	Eugenyl acetate	9.75
49.700	delta-Cadinene	0.21
49.882	cis-Calamenene	0.08
50.545	trans-Cadine-1,4-diene	0.02
51.559	Unidentified	0.03
51.844	Unidentified	0.05
53.058	Caryophyllenyl alcohol	0.02
53.435	Caryophyllene oxide	0.32
54.084	Unidentified	0.02
		100.00

This report is valid for 1 year from the analyzed date.

Chromatogram Clove - Barefut



Comments:

The analysis of this Clove Bud batch sample meets the expected chemical profile for authentic essential oil of *Eugenia caryophyllata*. No contamination or adulteration was detected.