

Sample Information

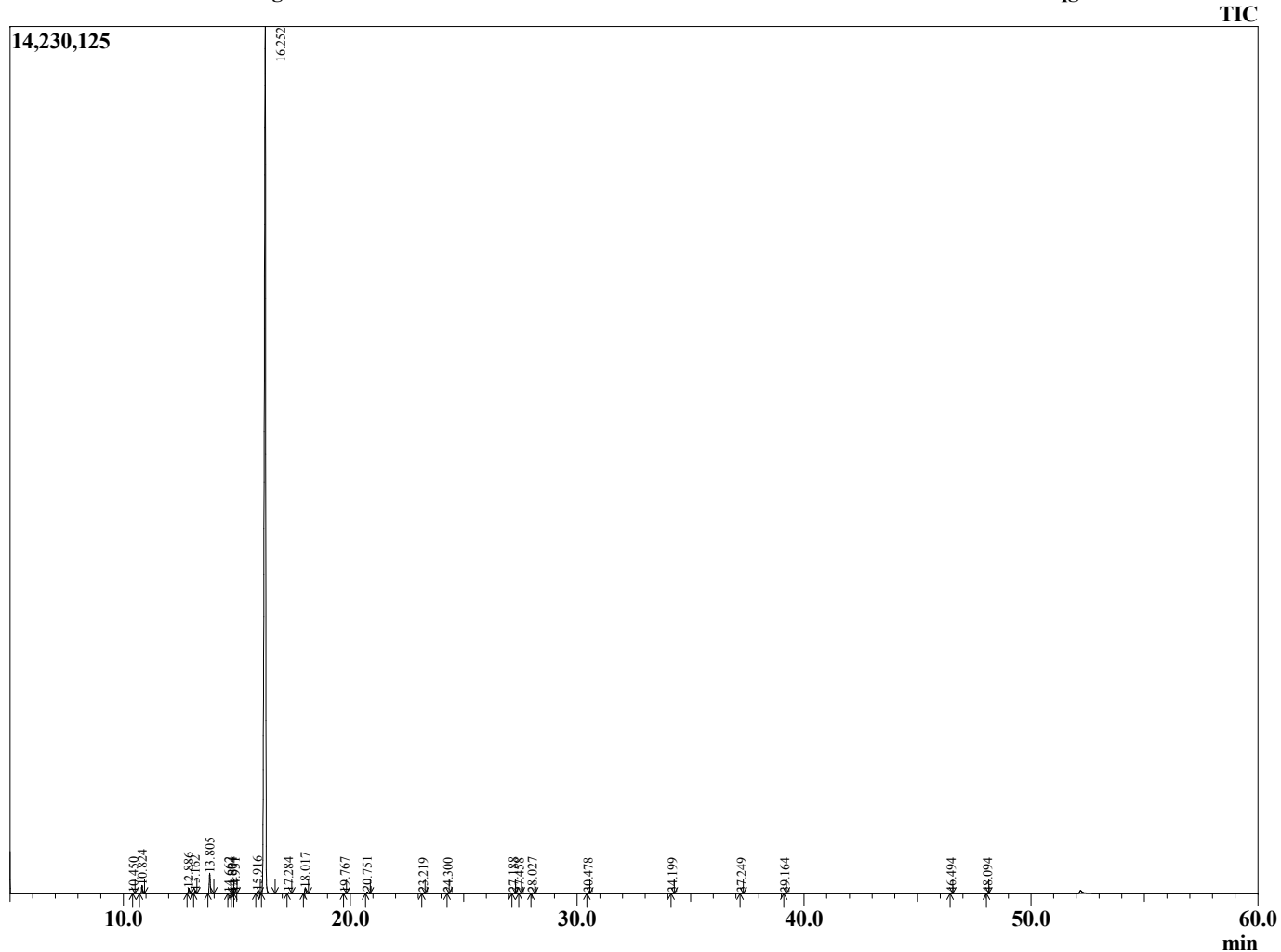
Analyzed by : Dr. Robert S. Pappas
 Analyzed : 8/6/2015 6:36:46 PM
 Sample Type : Essential Oil
 Sample Name : Clementine
 Sample ID : BA150805D
 Injection Volume : 0.10
 Data File : C:\GCMSsolution\Data\EOU\Clementine\Clementine BA150805D.qgd



Peak Report TIC

R.Time	Name	Area%
10.450	Thujene <alpha>	0.02
10.824	Pinene<alpha->	0.60
12.886	Sabinene	0.39
13.162	Pinene<beta->	0.23
13.805	Myrcene	1.61
14.662	Octanal<n->	0.07
14.804	Phellandrene <alpha->	0.03
14.931	Carene<delta-3->	0.08
15.916	Cymene <para->	0.19
16.252	Limonene	95.82
17.284	Ocimene <E-beta>	0.08
18.017	Terpinene<gamma->	0.48
19.767	Terpinolene	0.02
20.751	Linalool	0.16
23.219	Limonene-oxide<Z>	0.02
24.300	Citronellal.	0.01
27.188	Terpineol <alpha>	0.05
27.458	Carvone-dihydro-trans	0.01
28.027	Decanal	0.07
30.478	Carvone.	0.01
34.199	Acetophenone <3-methoxy>	0.02
37.249	Verbenyl acetate	0.01
39.164	Copaene<alpha>	0.01
46.494	Viridiflorene (Ledene)	0.01
48.094	Amorphene<delta>.	0.01
		100.00

Chromatogram Clementine C:\GCMSsolution\Data\EOU\Clementine\Clementine BA150805D.qgd



Comments:

Typical Ranges of Main Components: