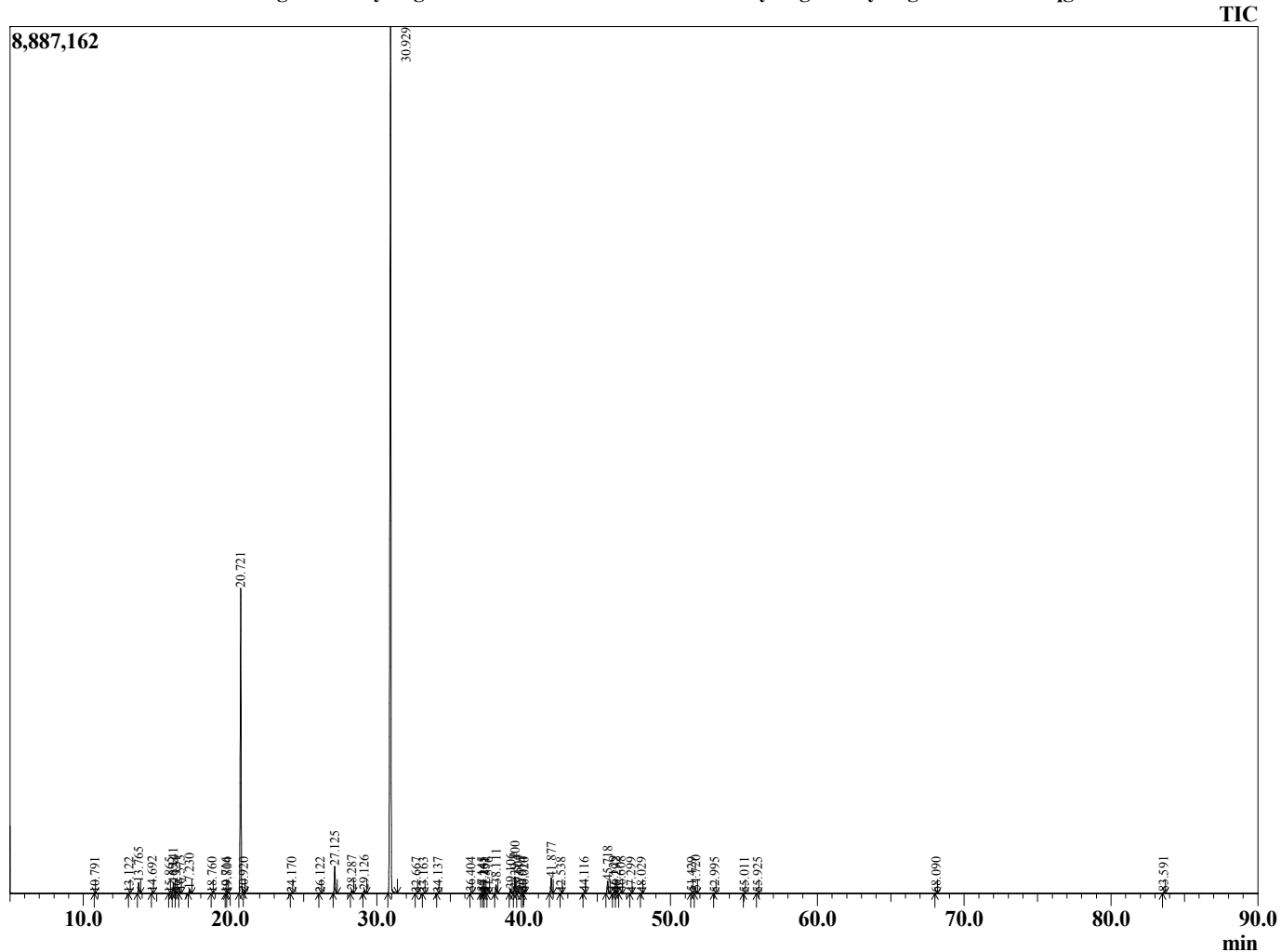


Sample Information

Analyzed by : Dr. Robert S. Pappas
 Analyzed : 7/27/2015 8:36:34 PM
 Sample Type : Essential Oil
 Sample Name : Clary Sage
 Sample ID : BA150727C
 Injection Volume : 0.10
 Data File : C:\GCMSsolution\Data\EOU\Clary Sage\Clary Sage BA150727C.qgd



Chromatogram Clary Sage C:\GCMSsolution\Data\EOU\Clary Sage\Clary Sage BA150727C.qgd



R.Time	Name	Area%
10.791	Pinene<alpha>	0.02
13.122	Pinene<beta>	0.02
13.765	Myrcene	0.69
14.692	Linalool oxide-dehydroxy <Z>	0.08
15.865	Cymene <p>	0.02
16.141	Limonene	0.61
16.324	Cineole <1,8>	0.02
16.573	Ocimene<(Z)-beta>	0.15
17.230	Ocimene<(E)-beta>	0.27
18.760	Linalool oxide <cis-(furanoid)>	0.04
19.716	Terpinolene	0.05
19.804	Linalool oxide <trans-furanoid>	0.03
20.721	Linalool	20.16
20.920	Hotrienol	0.02
24.170	Nerol oxide	0.03
26.122	Terpinen-4-ol	0.04
27.125	Terpineol <alpha>	1.86
28.287	Linalool formate	0.21
29.126	Nerol	0.22
30.929	Linalyl acetate	69.54
32.667	Neryl formate	0.03
33.163	Bornyl acetate<iso>	0.03
34.137	Geranyl formate	0.05
36.404	Terpendiol	0.07
37.145	Verbenol acetate cis	0.06
37.265	Cubebene<alpha>	0.04
37.351	Verbenol acetate trans	0.05
37.576	Eugenol	0.04
38.111	Neryl acetate	0.62
39.106	Copaene <alpha>	0.34
39.400	Geranyl acetate	1.20
39.604	Bourbonene <alpha>	0.21
39.914	Cubebene <beta>	0.06
40.020	Elemene<beta>	0.06
41.877	Caryophyllene <trans>	1.21
42.538	Copaene <beta>	0.04
44.116	Humulene<alpha>	0.06
45.718	Germacrene D	0.95
46.129	Viridiflorene (Ledene)	0.10
46.292	Hotrinyl acetate	0.02
46.608	Bicyclogermacrene	0.12
47.299	Farnesene <(E,E)alpha>	0.04
48.029	Cadinene <delta>	0.05
51.429	Spathulenol	0.05
51.720	Caryophyllene oxide	0.20
52.995	Viridifloral.	0.04
55.011	(2S,5E)-caryophyll-5-en-12-al	0.02
55.925	Cadinol <alpha>	0.03
68.090	Sclareol oxide	0.05
83.591	Sclareol.	0.10
		100.00

Comments:

Typical Ranges of Main Components: