

Sample Information

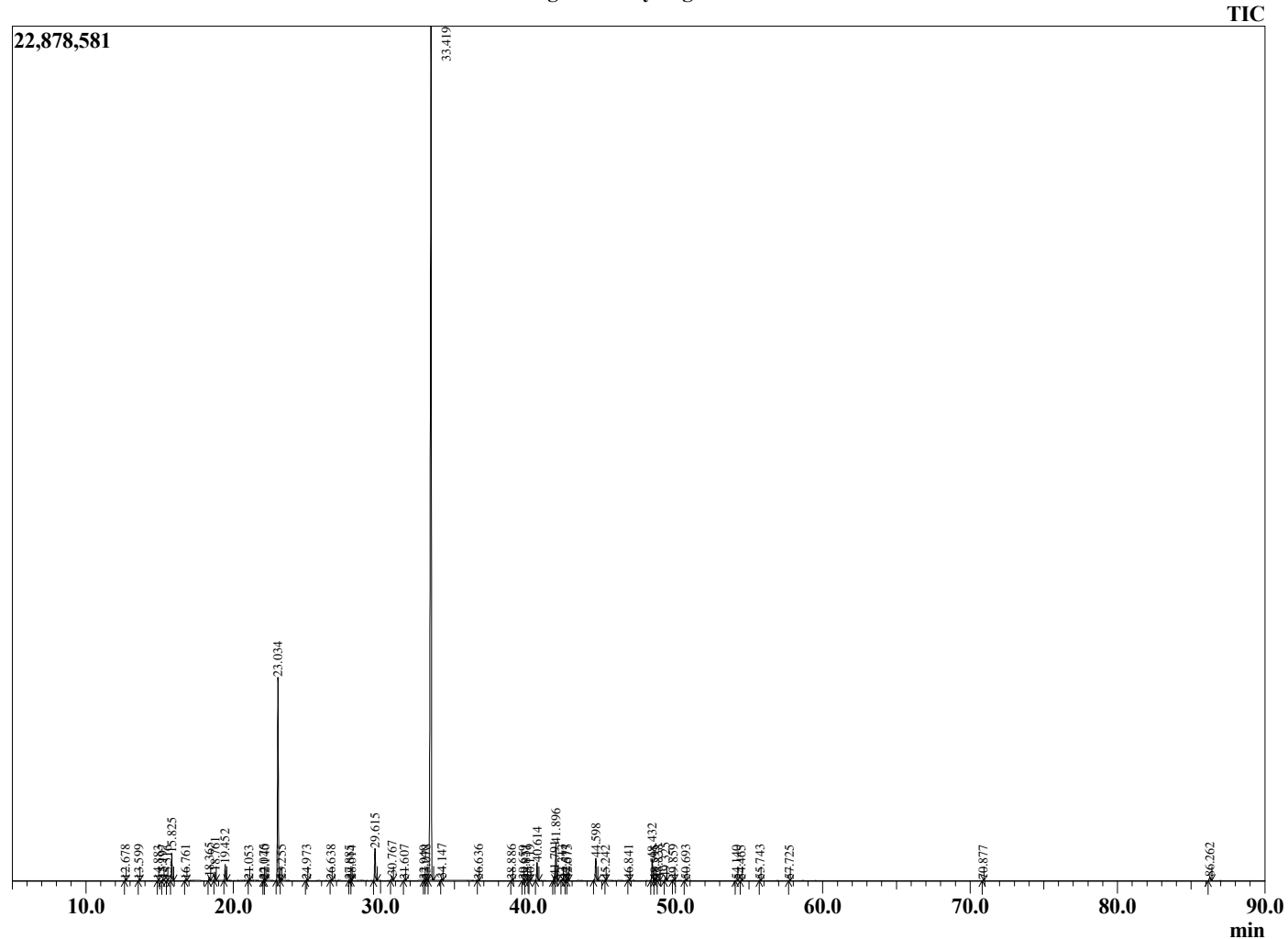
Analyzed by : Dr. Robert S. Pappas  
 Analyzed : 6/25/2021 2:57:18 AM  
 Sample Type : Essential Oil  
 Sample Name : Clary Sage Oil - Barefut  
 Sample ID : 0108  
 Injection Volume : 0.10  
 Instrument ID : GC-3



Peak Report TIC

R.Time	Name	Area%
4.113	3-Methylbutanal	0.01
4.222	2-Methylbutanal	0.01
12.678	alpha-Pinene	0.05
13.599	Camphene	0.03
14.883	Sabinene	0.01
15.197	beta-Pinene	0.08
15.516	Unidentified	0.01
15.825	Myrcene	1.54
16.761	Pseudolimonene	0.05
18.365	Limonene	0.19
18.761	(Z)-beta-Ocimene	0.48
19.452	(E)-beta-Ocimene	0.92
21.053	cis-Linalool oxide (furanoid)	0.01
22.075	Terpinolene	0.03
22.140	trans-Linalool oxide (furanoid)	0.02
23.034	Linalool	13.15
23.255	Hotrienol	0.02
24.973	allo-Ocimene	0.04
26.638	Citronellal	0.02
27.885	delta-Terpineol	0.01
28.014	Borneol	0.01
29.615	alpha-Terpineol	2.19
30.767	Linalyl formate	0.29
31.607	Nerol	0.04
32.940	Carvone	0.02
33.078	Unidentified	0.05
33.419	Linalyl acetate	71.91
34.147	Unidentified	0.11
36.636	Geranyl formate	0.02
38.886	Unidentified	0.03
39.659	Unidentified	0.02
39.851	Unidentified	0.04
40.119	Eugenol	0.02
40.614	Neryl acetate	1.24
41.791	alpha-Copaene	0.30
41.896	Geranyl acetate	2.61
42.313	beta-Bourbonene	0.05
42.577	beta-Cubebene	0.08
42.675	beta-Elemene	0.04
44.598	trans-beta-Caryophyllene	1.74
45.242	beta-Copaene	0.01
46.841	alpha-Humulene	0.02
48.432	Germacrene D	1.66
48.595	Unidentified	0.03
48.838	Valencene	0.09
49.325	Bicyclogermacrene	0.21
49.859	(E,E)-alpha-Farnesene	0.04
50.693	delta-Cadinene	0.07
54.140	Spathulenol	0.03
54.465	Caryophyllene oxide	0.03
55.743	Unidentified	0.03
57.725	Unidentified	0.01
70.877	Sclareoloxide	0.01
86.262	Sclareol	0.30
		100.00

Chromatogram Clary Sage Oil - Barefut



Comments:

The analysis of this Clary Sage batch sample meets the expected chemical profile for authentic essential oil of *Salvia sclarea*. No contamination or adulteration was detected. The results provided in this GCMS quality analysis reflect the chemical composition of the oil and lot referenced above on the date of analysis.