

Sample Information

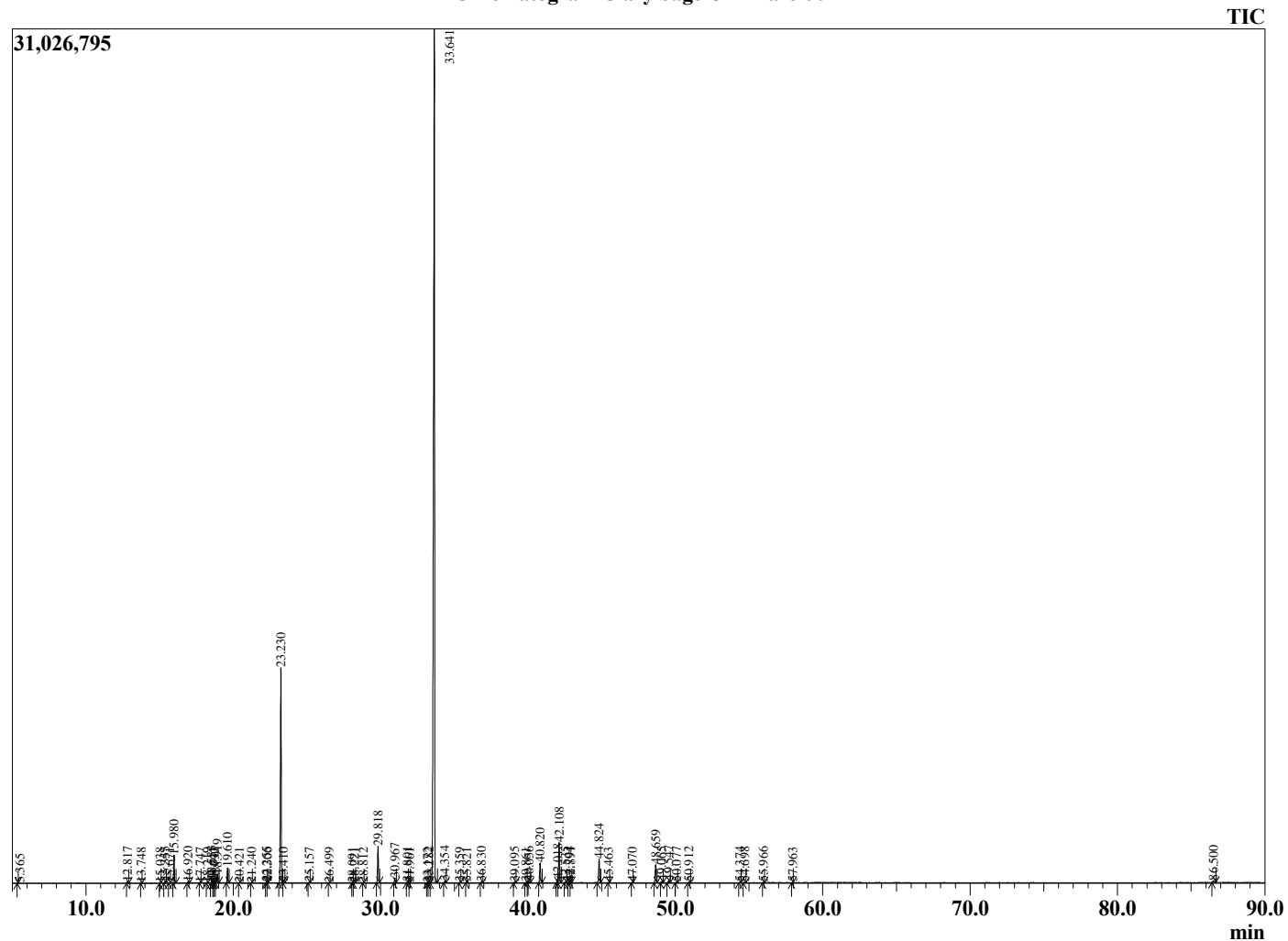
Analyzed by : Dr. Robert S. Pappas
 Analyzed : 3/26/2021 7:20:09 AM
 Sample Type : Essential Oil
 Sample Name : Clary Sage Oil - Barefut
 Sample ID : 0107
 Injection Volume : 0.10
 Instrument ID : GC-3



Peak Report TIC

R.Time	Name	Area%
4.162	3-Methylbutanal	0.02
4.275	2-Methylbutanal	0.01
5.365	1-Pentanol	0.00
12.817	alpha-Pinene	0.07
13.748	Camphene	0.01
15.038	Sabinene	0.03
15.355	beta-Pinene	0.09
15.671	HOD1203K	0.02
15.980	Myrcene	1.48
16.920	Pseudolimonene	0.07
17.747	alpha-Terpinene	0.01
18.219	para-Cymene	0.01
18.533	Limonene	0.15
18.641	beta-Phellandrene	0.01
18.732	1,8-Cineole	0.01
18.919	(Z)-beta-Ocimene	0.46
19.610	(E)-beta-Ocimene	0.85
20.421	gamma-Terpinene	0.01
21.240	cis-Linalool oxide (furanoid)	0.01
22.255	Terpinolene	0.05
22.306	trans-Linalool oxide (furanoid)	0.02
23.230	Linalool	13.76
23.410	Unidentified	0.03
25.157	allo-Ocimene	0.03
26.499	Camphor	0.01
28.091	delta-Terpineol	0.01
28.221	Borneol	0.01
28.812	Terpinen-4-ol	0.01
29.818	alpha-Terpineol	2.28
30.967	Linalyl formate	0.29
31.801	Nerol	0.04
31.961	Unidentified	0.01
33.172	Unidentified	0.01
33.282	Unidentified	0.04
33.641	Linalyl acetate	71.91
34.354	Unidentified	0.10
35.359	Unidentified	0.01
35.821	Unidentified	0.01
36.830	Geranyl formate	0.04
39.095	Unidentified	0.05
39.861	Unidentified	0.03
40.056	alpha-Terpinyl acetate	0.08
40.820	Neryl acetate	1.28
42.018	alpha-Copaene	0.20
42.108	Geranyl acetate	2.67
42.535	beta-Bourbonene	0.05
42.794	beta-Cubebene	0.06
42.891	beta-Elemene	0.04
44.824	trans-beta-Caryophyllene	1.66
45.463	beta-Copaene	0.01
47.070	alpha-Humulene	0.02
48.659	Germacrene D	1.25
49.065	Valencene	0.09
49.547	Bicyclogermacrene	0.15
50.077	(E,E)-alpha-Farnesene	0.04
50.912	delta-Cadinene	0.05
54.374	Spathulenol	0.03
54.698	Caryophyllene oxide	0.05
55.966	Unidentified	0.02
57.963	Unidentified	0.02
86.500	Sclareol	100.00

Chromatogram Clary Sage Oil - Barefut



Comments:

The analysis of this Clary Sage batch sample meets the expected chemical profile for authentic essential oil of *Salvia sclarea*. No contamination or adulteration was detected. The results provided in this GCMS quality analysis reflect the chemical composition of the oil and lot referenced above on the date of analysis.