

Sample Information

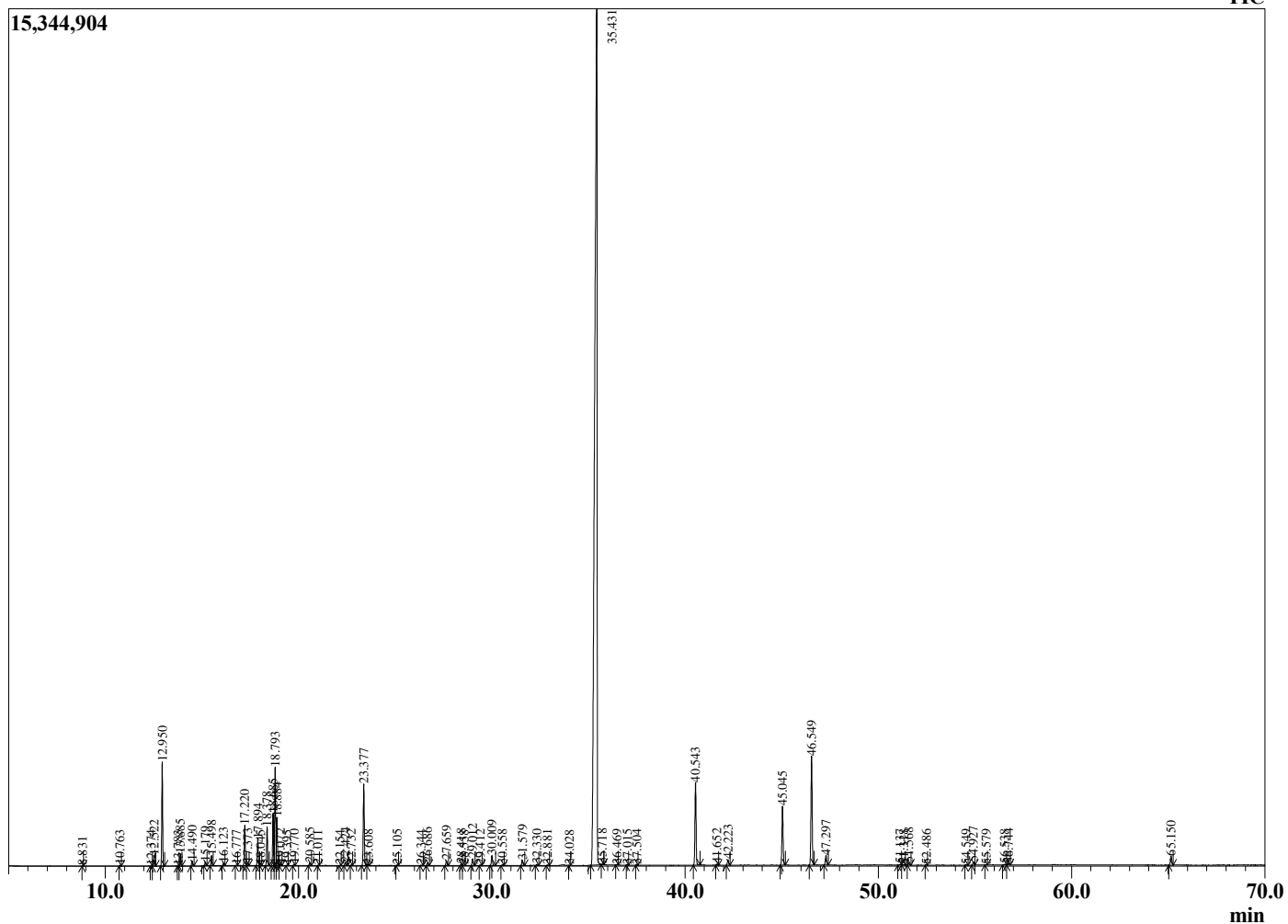
Analyzed by : Dr. Robert S. Pappas
 Analyzed : 11/23/2020 9:55:53 AM
 Sample Type : Essential Oil
 Sample Name : Cinnamon Bark - Barefut
 Sample ID : 0110
 Injection Volume : 0.10
 Instrument ID : GC-3



Peak Report TIC

R.Time	Name	Area%
8.831	Ethyl 2-methylbutyrate	0.00
10.763	Styrene	0.02
12.374	Tricyclene	0.01
12.522	alpha-Thujene	0.31
12.950	alpha-Pinene	3.03
13.783	alpha-Fenchene	0.01
13.885	Camphene	0.36
14.490	Benzaldehyde	0.16
15.179	Sabinene	0.12
15.498	beta-Pinene	0.31
16.123	Myrcene	0.09
16.777	2-Carene	0.01
17.220	alpha-Phellandrene	1.28
17.373	delta-3-Carene	0.08
17.894	alpha-Terpinene	0.85
18.045	ortho-Cymene	0.01
18.378	para-Cymene	1.26
18.685	Limonene	1.71
18.793	beta-Phellandrene	3.31
18.884	1,8-Cineole	1.53
19.072	cis-beta-Ocimene	0.05
19.395	Butyl 2-methylbutyrate	0.01
19.770	trans-beta-Ocimene	0.04
20.585	gamma-Terpinene	0.09
21.011	Unidentified	0.01
22.154	Isoterpinolene	0.01
22.424	Terpinolene	0.11
22.732	para-Cymenene	0.02
23.377	Linalool	2.88
23.608	2-Methylbutyl-2-methylbutyrate	0.04
25.105	cis-para-Menth-2-en-1-ol	0.02
26.344	trans-para-Menth-2-en-1-ol	0.02
26.686	Camphor	0.10
27.659	Hydrocinnamaldehyde	0.19
28.418	Borneol	0.06
28.558	2-Methylbenzofuran	0.02
29.012	Terpinen-4-ol	0.26
29.412	Cryptone	0.03
30.009	alpha-Terpineol	0.39
30.558	alpha-Phellandrene epoxide	0.04
31.579	(Z)-Cinnamaldehyde	0.20
32.330	Hydrocinnamic alcohol	0.04
32.881	ortho-Anisaldehyde	0.02
34.028	Unidentified	0.01
35.431	(E)-Cinnamaldehyde	69.37
35.718	Phellandral	0.01
36.469	Safrole	0.02
37.015	Carvacrol	0.02
37.504	(E)-Cinnamyl alcohol	0.02
40.543	Eugenol	3.22
41.652	Hydrocinnamyl acetate	0.04
42.223	alpha-Copaene	0.22
45.045	beta-Caryophyllene	2.42
46.549	(E)-Cinnamyl acetate	4.32
47.297	alpha-Humulene	0.40
51.137	delta-Cadinene	0.03
51.318	trans-Calamenene	0.01
51.568	ortho-Methoxycinnamaldehyde	0.09
52.486	Unidentified	0.02
54.549	Caryophyllene alcohol	0.03
54.927	Caryophyllene oxide	0.15
55.579	Unidentified	0.02

Chromatogram Cinnamon Bark - Barefut



Comments:

The analysis of this Cinnamon Bark batch sample meets the expected chemical profile for authentic essential oil of *Cinnamomum zeylanicum*. No contamination or adulteration was detected. The results provided in this GCMS quality analysis reflect the chemical composition of the oil and lot referenced above on the date of analysis.

R.Time	Name	Area%
56.538	Humulene epoxide II	0.03
56.744	Tetradecanal	0.05
65.150	Benzyl benzoate	0.42
		100.00