

Sample Information

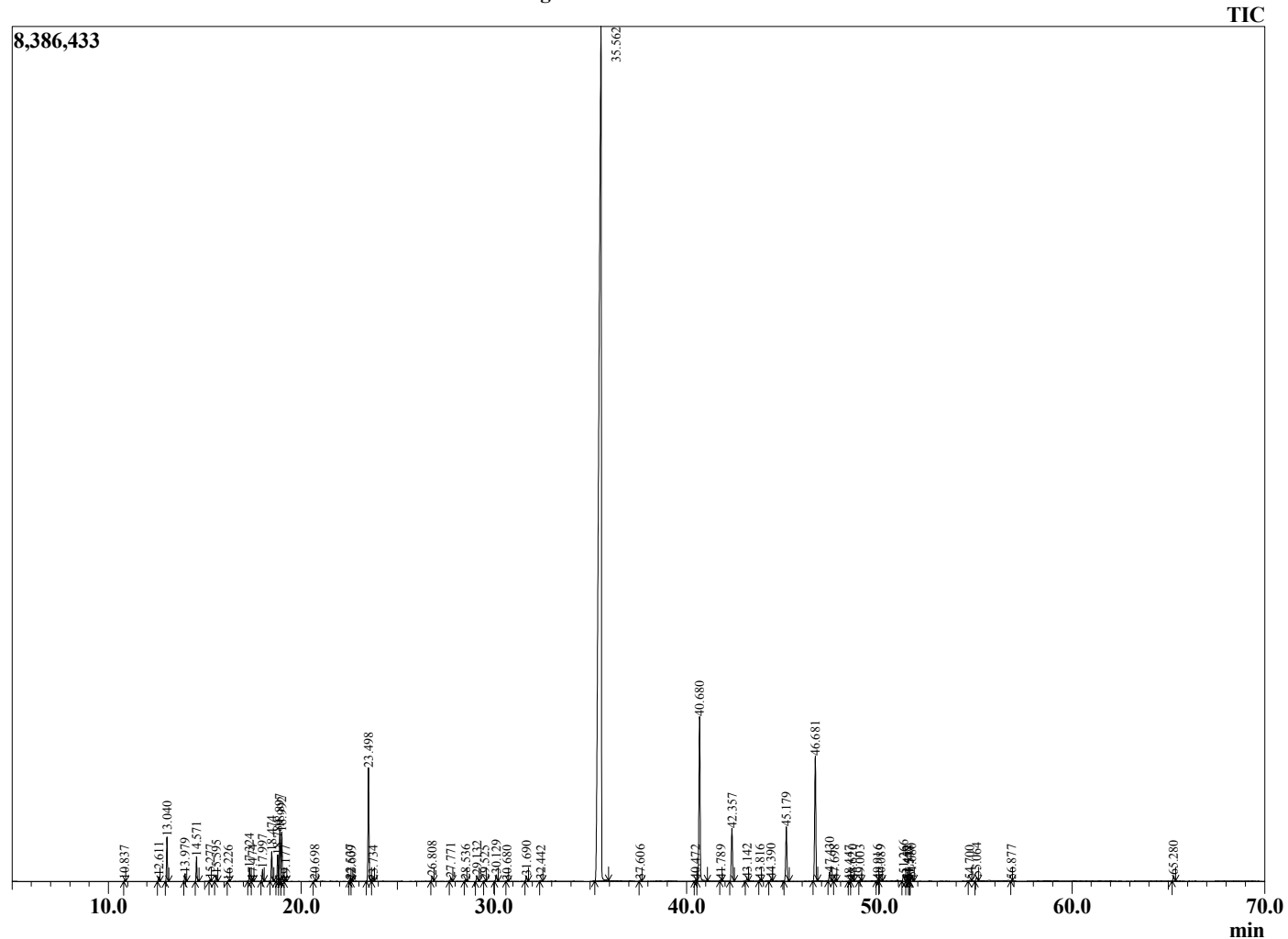
Analyzed by : Dr. Robert S. Pappas
 Analyzed : 3/25/20 7:39:51 PM
 Sample Type : Essential Oil
 Sample Name : Cinnamon Bark - Barefut
 Sample ID : 0109
 Injection Volume : 0.10
 Instrument ID: GC-3



Peak Report TIC

R.Time	Name	Area%
10.837	Styrene	0.03
12.611	alpha-Thujene	0.13
13.040	alpha-Pinene	1.22
13.979	Camphene	0.23
14.571	Benzaldehyde	0.70
15.277	Sabinene	0.05
15.595	beta-Pinene	0.20
16.226	Myrcene	0.02
17.324	alpha-Phellandrene	0.40
17.474	delta-3-Carene	0.04
17.997	alpha-Terpinene	0.36
18.474	para-Cymene	0.91
18.784	Limonene	0.83
18.897	beta-Phellandrene	1.68
18.992	1,8-cineole	1.55
19.177	cis-beta-Ocimene	0.02
20.698	gamma-Terpinene	0.04
22.537	Terpinolene	0.04
22.609	trans-Linalool oxide (furanoid)	0.01
23.498	Linalool	3.80
23.734	2-Methylbutyl 2-methylbutyrate	0.03
26.808	Camphor	0.19
27.771	Hydrocinnamaldehyde	0.12
28.536	Borneol	0.06
29.132	Terpinen-4-ol	0.21
29.525	Crypene + para-Cymen-8-ol	0.03
30.129	alpha-Terpineol	0.24
30.680	alpha-Phellandrene epoxide	0.02
31.690	(Z)-Cinnamaldehyde	0.19
32.442	Hydrocinnamyl alcohol	0.04
35.562	(E)-Cinnamaldehyde	69.60
37.606	(E)-Cinnamyl alcohol	0.05
40.472	alpha-Cubebene	0.04
40.680	Eugenol	6.28
41.789	Hydrocinnamyl acetate	0.04
42.357	alpha-Copaene	2.07
43.142	beta-Cubebene	0.10
43.816	Methyleugenol	0.06
44.390	alpha-Gurjunene	0.08
45.179	beta-Caryophyllene	2.09
46.681	(E)-Cinnamyl acetate	4.72
47.430	alpha-Humulene	0.37
47.698	Alloaromadendrene	0.05
48.447	10-beta-H-Cadina-1(6),4-diene	0.02
48.620	trans-Cadina-1(6),4-diene	0.05
49.003	Unidentified	0.04
49.916	Bicyclogermacrene	0.04
50.089	alpha-Murolene	0.04
51.266	delta-Cadinene	0.26
51.452	trans-Calamenene	0.04
51.548	Unidentified	0.02
51.577	Unidentified	0.01
51.680	ortho-Methoxycinnamaldehyde	0.12
54.700	Caryophyllene alcohol	0.04
55.064	Caryophyllene oxide	0.18
56.877	Tetradecanal	0.02
65.280	Benzyl benzoate	0.21
		100.00

Chromatogram Cinnamon Bark - Barefut



Comments:

The analysis of this Cinnamon Bark batch sample meets the expected chemical profile for authentic essential oil of *Cinnamomum zeylanicum*. No contamination or adulteration was detected. The results provided in this GCMS quality analysis reflect the chemical composition of the oil and lot referenced above on the date of analysis.