

Sample Information

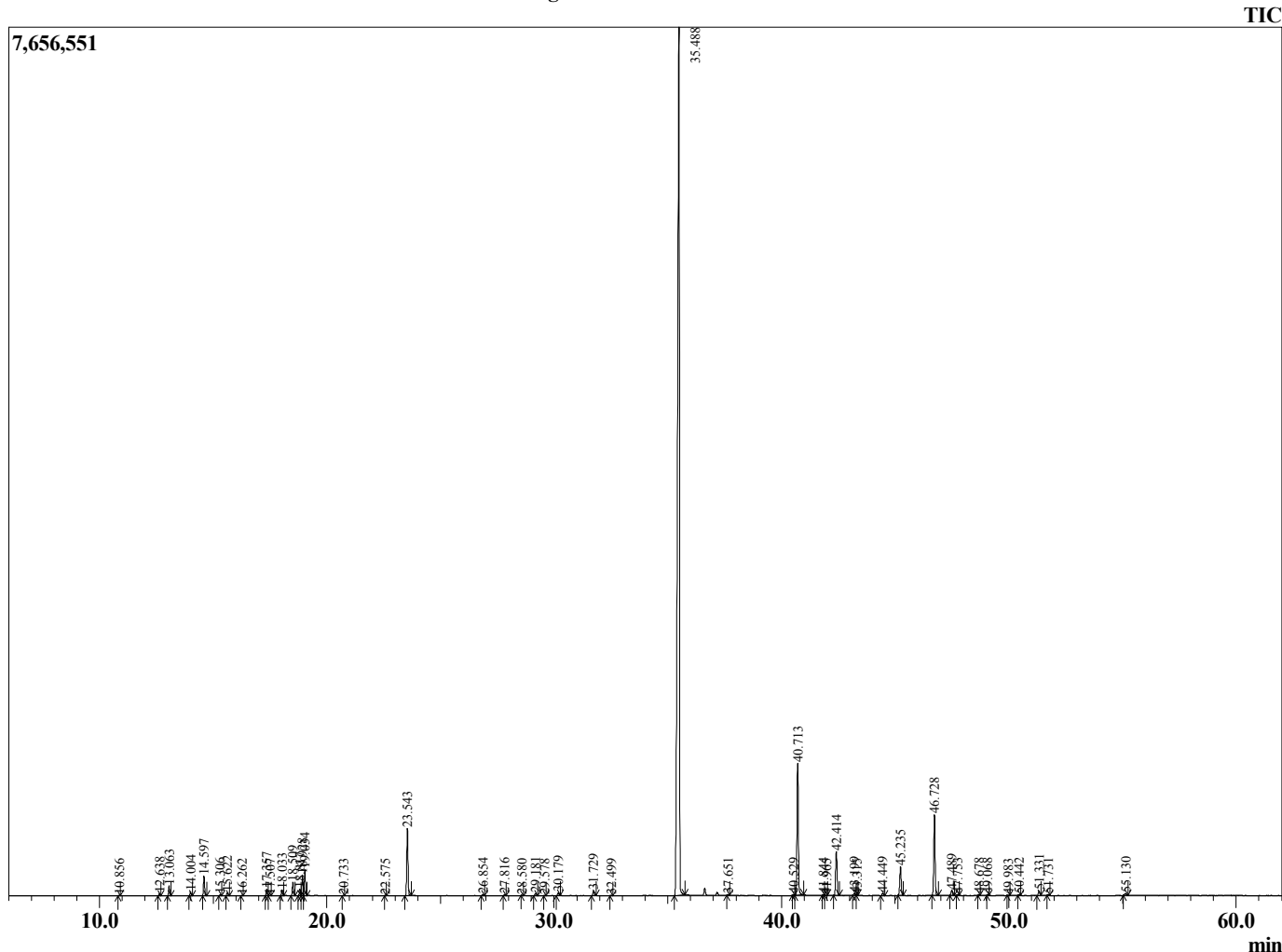
Analyzed by : Dr. Robert S. Pappas
 Analyzed : 11/21/2019 3:43:06 AM
 Sample Type : Essential Oil
 Sample Name : Cinnamon Bark - Barefut
 Sample ID : 0108
 Injection Volume : 0.10
 Instrument ID : GC-3



Peak Report TIC

R.Time	Name	Area%
10.856	Styrene	0.03
12.638	alpha-Thujene	0.10
13.063	alpha-Pinene	0.45
14.004	Camphene	0.19
14.597	Benzaldehyde	0.90
15.306	Sabinene	0.04
15.622	beta-Pinene	0.15
16.262	Myrcene	0.01
17.357	alpha-Phellandrene	0.32
17.507	3-Carene	0.03
18.033	alpha-Terpinene	0.28
18.509	para-Cymene	0.67
18.817	Limonene	0.33
18.928	beta-Phellandrene	1.04
19.034	1,8-Cineole	1.34
20.733	gamma-Terpinene	0.02
22.575	Terpinolene	0.02
23.543	Linalool	3.58
26.854	Camphor	0.06
27.816	Benzenepropanal	0.05
28.580	Borneol	0.02
29.181	Terpinen-4-ol	0.13
29.578	p-Cymen-8-ol	0.02
30.179	alpha-Terpineol	0.14
31.729	Z-Cinnamaldehyde	0.26
32.499	Hydrocinnamic alcohol	0.02
35.488	E-Cinnamaldehyde	71.30
37.651	E-Cinnamyl alcohol	0.05
40.529	alpha-Cubebene	0.03
40.713	Eugenol	7.79
41.844	3-Phenyl propyl acetate	0.03
41.965	Isoledene	0.02
42.414	alpha-Copaene	2.78
43.199	beta-Cubebene	0.13
43.315	beta-Elementene	0.01
44.449	alpha-Gurjunene	0.12
45.235	beta-Caryophyllene	1.85
46.728	E-Cinnamyl acetate	4.70
47.489	alpha-Humulene	0.33
47.753	Alloaromadendrene	0.05
48.678	trans-Cadina-1(6),4-diene	0.04
49.068	Unidentified	0.03
49.983	Unidentified	0.03
50.442	Unidentified	0.04
51.331	delta-Cadinene	0.28
51.731	ortho-methoxy-Cinnamaldehyde	0.04
55.130	Caryophyllene oxide	0.15
		100.00

Chromatogram Cinnamon Bark - Barefut



Comments:

The analysis of this Cinnamon Bark batch sample meets the expected chemical profile for authentic essential oil of *Cinnamomum zeylanicum*. No contamination or adulteration was detected. The results provided in this GCMS quality analysis reflect the chemical composition of the oil and lot referenced above on the date of analysis.