

Sample Information

Analyzed by : Dr. Robert S. Pappas
 Analyzed : 3/27/2019 5:42:37 PM
 Sample Type : Essential Oil
 Sample Name : Roman Chamomile - Barefut
 Sample ID : 0102
 Injection Volume : 0.10
 Instrument ID : GC-4

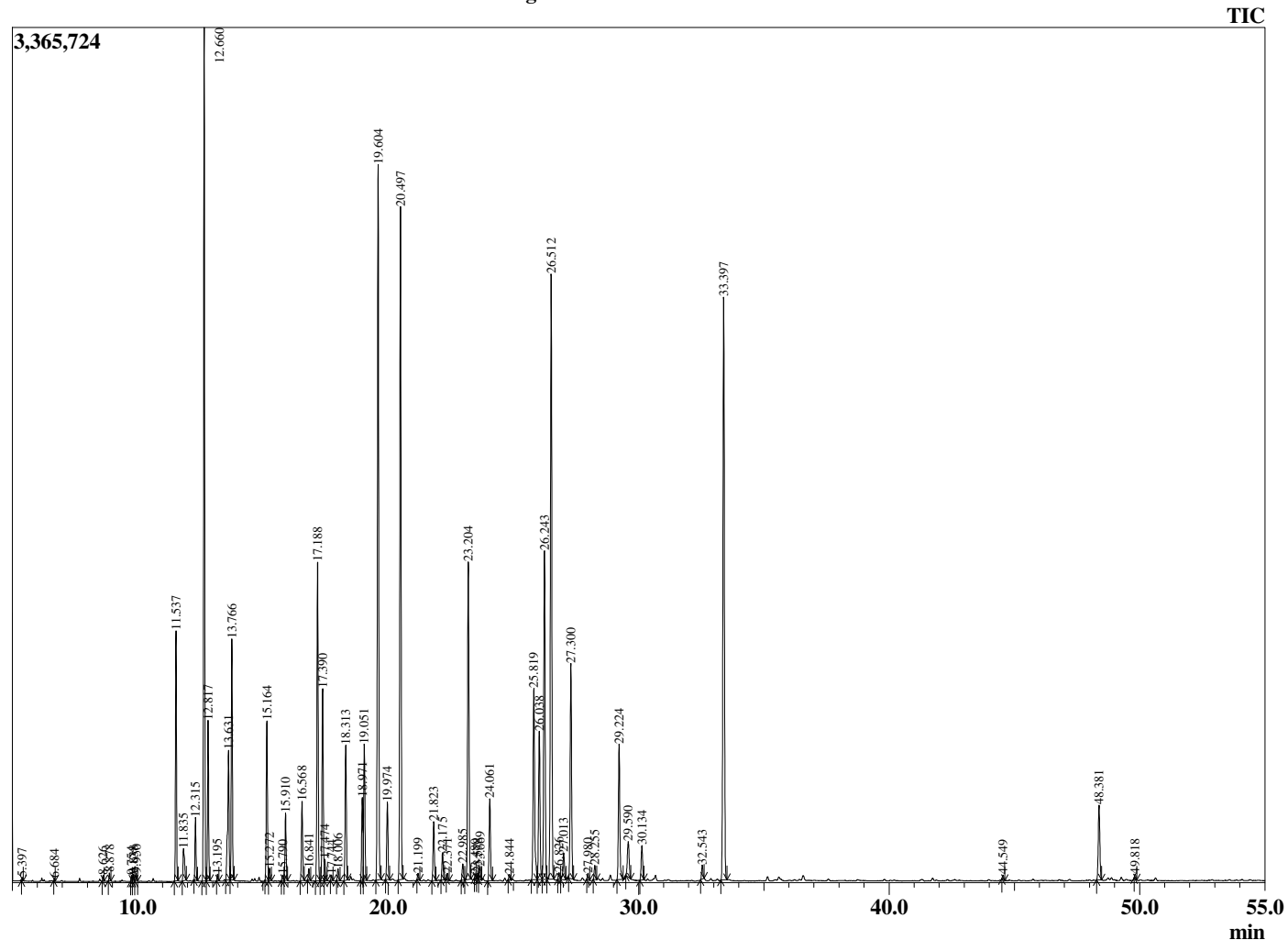


Peak Report TIC

R.Time	Name	Area%
5.397	2-Methyl butanol	0.02
6.684	1-Octene	0.02
8.626	Ethyl 2-methylbutyrate	0.05
8.878	Propyl isobutyrate	0.08
9.754	Isopentyl acetate	0.05
9.838	2-Methylbutyl acetate	0.07
9.950	Propyl methacrylate	0.08
11.537	Isobutyl isobutyrate	2.63
11.835	Prenyl acetate	0.53
12.315	2,5,8-Trimethyl nonane	0.67
12.660	alpha-Pinene	9.40
12.817	Isobutyl methacrylate	1.76
13.195	Propyl 2-methylbutyrate	0.06
13.631	3-Methylcyclohexanone	1.92
13.766	Isobutyl butyrate	2.79
15.164	beta-Pinene	2.00
15.272	Unidentified	0.15
15.790	Myrcene	0.08
15.910	Ethyl tiglate isomer	0.80
16.568	Isobutyl 2-methylbutyrate	0.97
16.841	Isobutyl isovalerate	0.14
17.188	Isoamyl isobutyrate	4.08
17.390	2-Methylbutyl isobutyrate	2.49
17.474	Roman chamomile isomer 1	0.25
17.744	Roman chamomile isomer 1	0.06
18.006	para-Cymene	0.16
18.313	Limonene	1.78
18.971	Pentyl methacrylate	1.06
19.051	Isopentyl methacrylate	1.86
19.604	Isobutyl angelate	9.47
19.974	Prenyl isobutyrate	1.02
20.497	Methallyl angelate	8.92
21.199	Hexyl propionate	0.08
21.823	Camphenilone	0.82
22.175	Butyl angelate	0.37
22.371	Isobutyl tiglate	0.08
22.985	Isoamyl isovalerate	0.23
23.204	2-Methylbutyl-2-methylbutyrate	4.67
23.480	Unidentified	0.04
23.578	2-Methylbutyl isovalerate	0.06
23.669	Butyl 3-methylpentanoate	0.17
24.061	Hexyl isobutyrate	1.16
24.844	alpha-Campholenal	0.07
25.819	trans-Pinocarveol	3.05
26.038	Butanoic Acid Ester	2.26
26.243	Isoamyl angelate	4.91
26.512	Isoamyl tiglate	8.85
26.826	trans-beta-Terpineol	0.10
27.013	Amyl angelate isomer	0.44
27.300	Pinocarvone	3.16
27.980	Borneol	0.08
28.255	Isopinocampnone	0.20
29.224	2-Methyl-2-butene angelate	2.04
29.590	Myrtenal	0.67
30.134	3-Methyl-3-methylpentyl butyrate	0.52
32.543	2-Hydroxy-2-methyl-but-3-enyl 2-methyl-2-ci	0.20
33.397	4-Methyl amyl angelate	9.02
44.549	beta-Caryophyllene	0.06
48.381	Germaecene D	1.22
49.818	(E,E)-alpha-Farnesene	0.06
		100.00

This report is valid for 1 year from the analyzed date.

Chromatogram Roman Chamomile - Barefut



Comments:

The analysis of this Roman Chamomile batch sample meets the expected chemical profile for authentic essential oil of *Anthemis nobilis*. No contamination or adulteration was detected.