

Sample Information

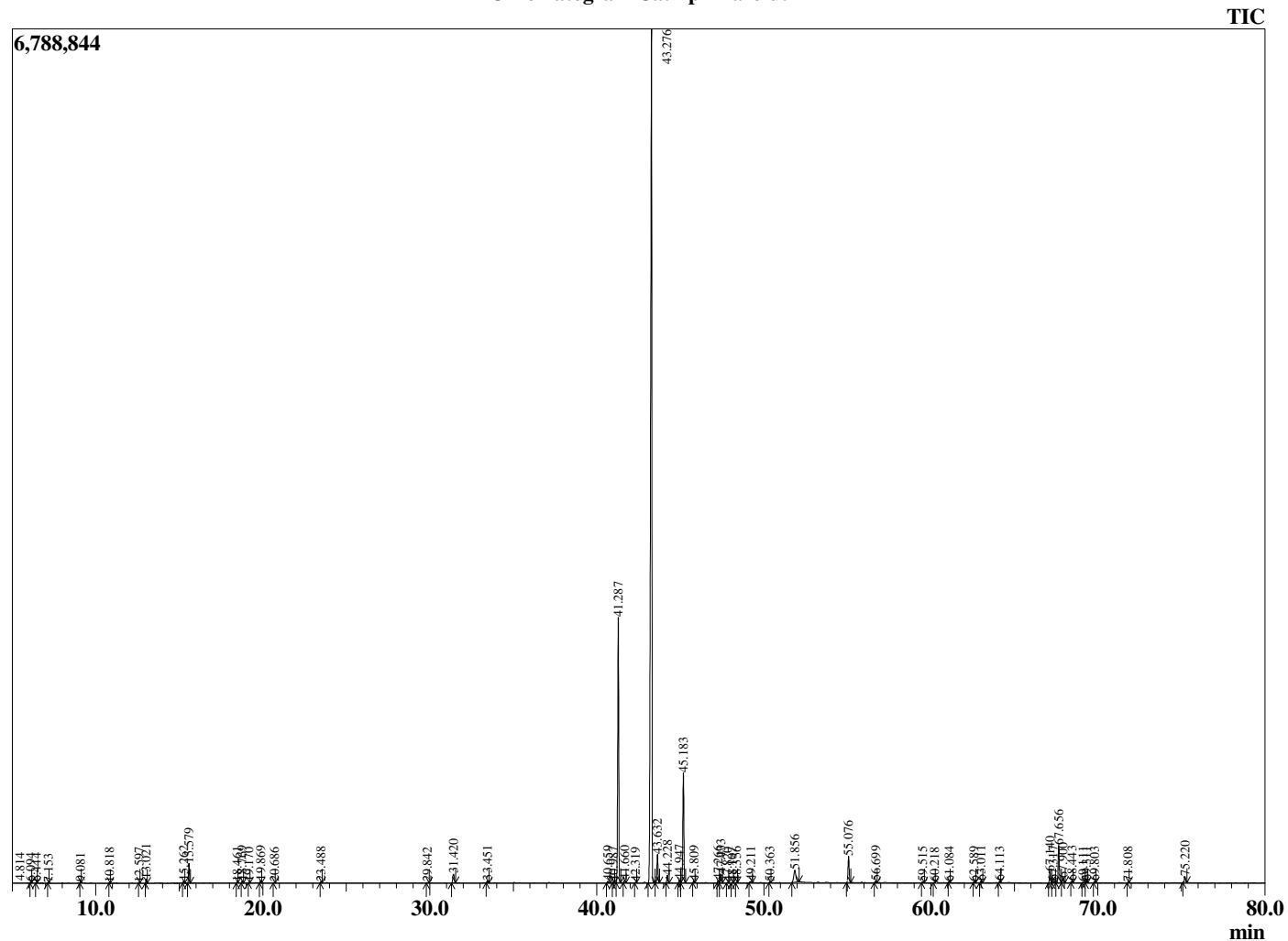
Analyzed by : Dr. Robert S. Pappas
 Analyzed : 12/12/2019 9:09:50 AM
 Sample Type : Essential Oil
 Sample Name : Catnip - Barefut
 Sample ID : 0101
 Injection Volume : 0.10
 Instrument ID : GC-3



Peak Report TIC

R.Time	Name	Area%
4.225	3-Methylbutanal	0.03
4.338	2-Methylbutanal	0.02
4.814	2-Ethylfuran	0.04
6.094	Unidentified	0.04
6.444	Methyl 2-methylbutyrate	0.03
7.153	Hexanal	0.02
9.081	Hex-2(E)-enal	0.04
10.818	Styrene	0.02
12.597	alpha-Thujene	0.02
13.021	alpha-Pinene	0.17
15.262	Sabinene	0.09
15.579	beta-Pinene	0.90
18.461	para-Cymene	0.03
18.769	Limonene	0.09
19.170	cis-beta-Ocimene	0.02
19.869	trans-beta-Ocimene	0.11
20.686	gamma-Terpinene	0.03
23.488	Linalool	0.05
29.842	Methyl salicylate	0.03
31.420	Unidentified	0.74
33.451	Carvone	0.12
40.659	Eugenol	0.13
40.987	Unidentified	0.06
41.287	4a-alpha,7-alpha,7a-alpha-Nepetalactone	15.67
41.660	Unidentified	0.14
42.319	Unidentified	0.03
43.276	4a-alpha,7beta,7a-alpha-Nepetalactone	63.09
43.632	Nepetalactone isomer	1.61
44.228	cis-beta-Caryophyllene	0.45
44.947	alpha-Dihydronepetalactone	0.18
45.183	beta-Caryophyllene	6.75
45.809	Nepetalactone isomer	0.10
47.266	Unidentified	0.15
47.433	alpha-Humulene	0.55
47.820	Unidentified	0.04
48.107	Nepetic acid isomer	0.03
48.356	Unidentified	0.03
49.211	Nepetic acid isomer	0.12
50.363	Unidentified	0.07
51.856	Nepetic acid	1.49
55.076	Caryophyllene oxide	1.74
56.699	Humulene epoxide II	0.10
59.515	Nepetic acid isomer	0.06
60.218	Unidentified	0.03
61.084	alpha-Bisabolol	0.03
62.589	Unidentified	0.06
63.011	Unidentified	0.12
64.113	Unidentified	0.06
67.140	Nepetalic acid isomer	0.73
67.317	Unidentified	0.15
67.656	Nepetalic acid	2.55
67.900	Unidentified	0.33
68.443	Nepetalic acid isomer	0.08
69.111	Nepetalic acid isomer	0.03
69.311	Unidentified	0.06
69.803	Unidentified	0.06
71.808	Nepetalic acid isomer	0.04
75.220	Nepetalic acid isomer	0.43
		100.00

Chromatogram Catnip - Barefut



Comments:

The analysis of this Catnip batch sample meets the expected chemical profile for authentic essential oil of *Nepeta cataria*. No contamination or adulteration was detected. The results provided in this GCMS quality analysis reflect the chemical composition of the oil and lot referenced above on the date of analysis.