

Sample Information

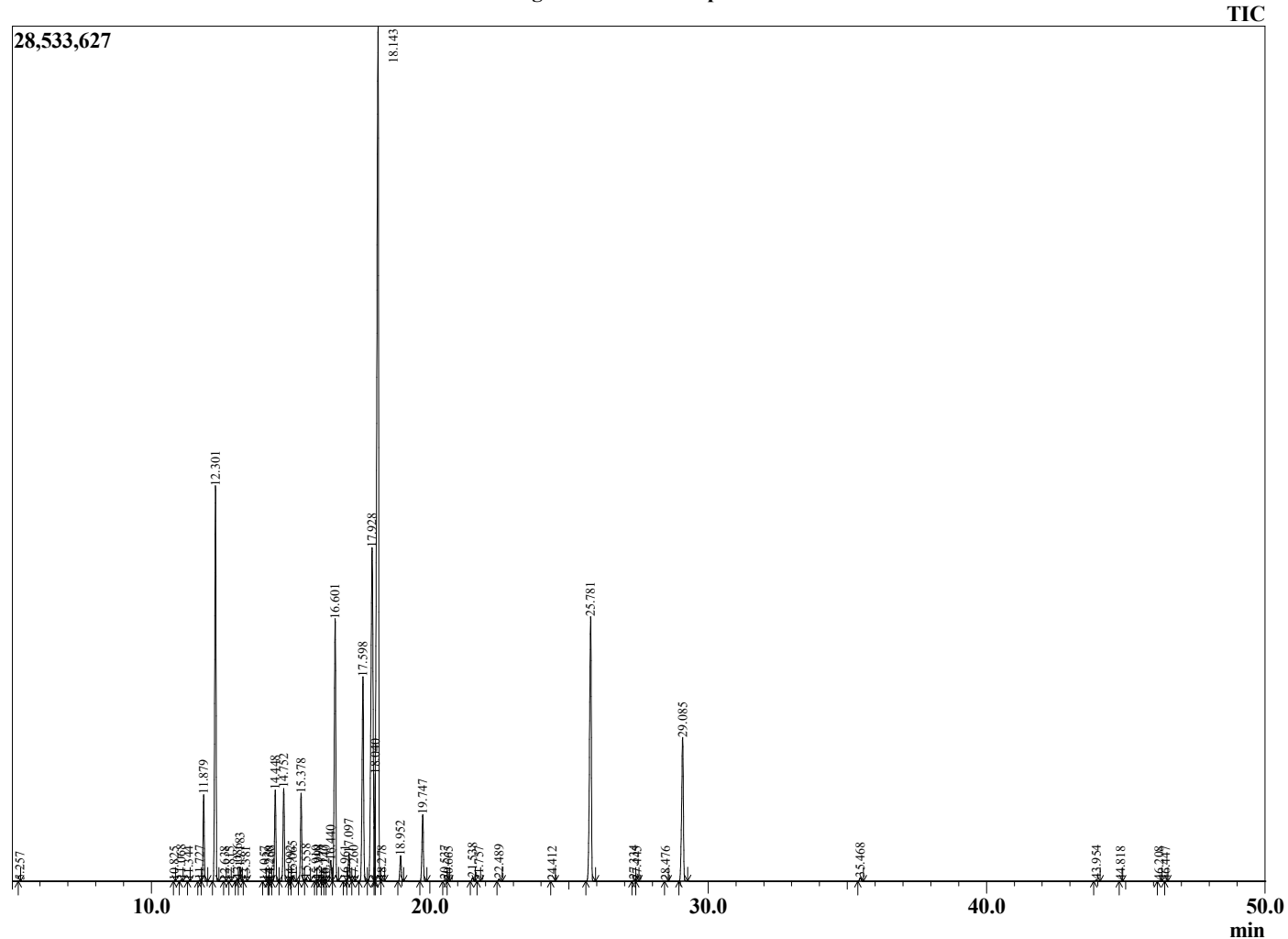
Analyzed by : Dr. Robert S. Pappas  
 Analyzed : 10/14/2021 4:50:11 PM  
 Sample Type : Essential Oil  
 Sample Name : Chinese Camphor - Barefut  
 Sample ID : 0106  
 Injection Volume : 0.10  
 Instrument ID : GC-4



Peak Report TIC

R.Time	Name	Area%
5.257	4-Methyl-2-pentanone	0.01
10.825	Unidentified	0.00
11.068	2,6-Dimethyl-4-octene	0.03
11.344	Unidentified	0.00
11.727	Tricyclene	0.02
11.879	alpha-Thujene	2.00
12.301	alpha-Pinene	9.95
12.638	Unidentified	0.00
12.815	Unidentified	0.00
13.086	alpha-Fenchene	0.06
13.183	Camphene	0.34
13.381	Thuja-2,4(10)-diene	0.00
14.057	Unidentified	0.01
14.230	Unidentified	0.00
14.268	Bois de Rose oxide	0.02
14.448	Sabinene	2.32
14.752	beta-Pinene	2.37
14.992	trans-meta-Mentha-2,8-diene	0.01
15.065	6-Methyl hept-5-en-2-one	0.14
15.378	Myrcene	2.28
15.558	6-Methyl hept-5-en-2-ol	0.07
15.910	Unidentified	0.01
15.998	delta-2-Carene	0.05
16.177	Unidentified	0.01
16.240	Octanal	0.02
16.440	alpha-Phellandrene	0.62
16.601	delta-3-Carene	7.37
16.961	1,4-Cineole	0.02
17.097	alpha-Terpinene	0.73
17.260	ortho-Cymene	0.01
17.598	para-Cymene	6.30
17.928	Limonene	14.20
18.040	beta-Phellandrene	1.53
18.143	1,8-Cineole	32.32
18.278	cis-beta-Ocimene	0.03
18.952	trans-beta-Ocimene	0.69
19.747	gamma-Terpinene	1.92
20.537	trans-Sabinene hydrate + cis-Linalool oxide (I	0.03
20.665	Unidentified	0.00
21.538	Terpinolene	0.10
21.757	Fenchone	0.01
22.489	Linalool	0.06
24.412	Unidentified	0.01
25.781	Camphor	9.16
27.334	delta-Terpineol	0.03
27.445	Borneol	0.01
28.476	Cryptone	0.00
29.085	alpha-Terpineol	4.92
35.468	Safrole	0.11
43.954	trans-beta-Caryophyllene	0.05
44.818	trans-alpha-Bergamotene	0.00
46.208	alpha-Humulene	0.01
46.447	beta-Santalene	0.00
		100.00

Chromatogram Chinese Camphor - Barefut



Comments:

The analysis of this Camphor, China batch sample meets the expected chemical profile for authentic essential oil of *Cinnamomum camphora*. No contamination or adulteration was detected. The results provided in this GCMS quality analysis reflect the chemical composition of the oil and lot referenced above on the date of analysis.