

Sample Information

Analyzed by : Dr. Robert S. Pappas
 Analyzed : 3/4/2019 3:41:15 PM
 Sample Type : Essential Oil
 Sample Name : White Camphor Oil - Barefut
 Sample ID : 0104
 Injection Volume : 0.10
 Instrument ID : GC-4

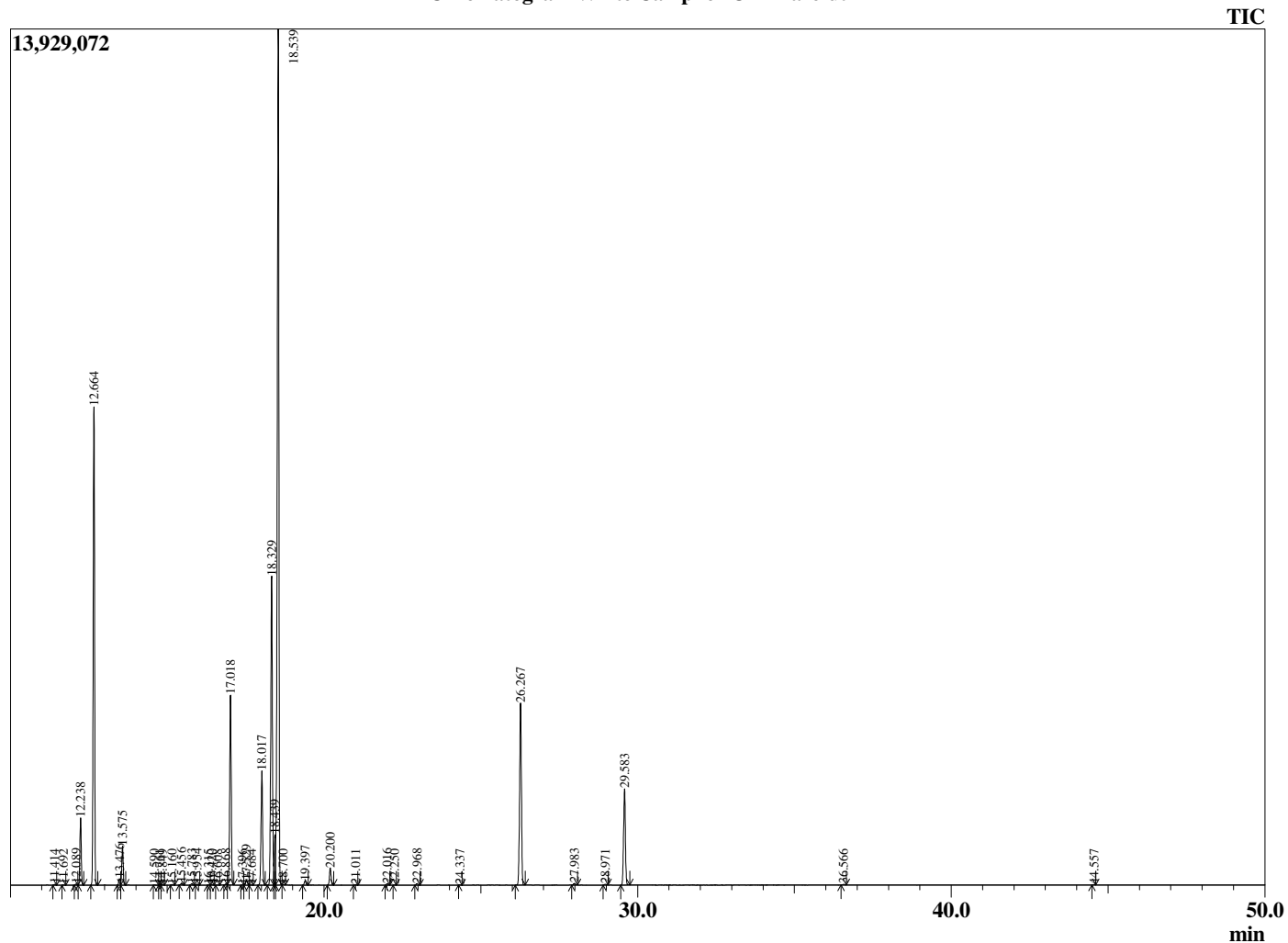


Peak Report TIC

R.Time	Name	Area%
11.414	2,6-Dimethyl-3-octene	0.02
11.692	Unidentified	0.01
12.089	Tricyclene	0.04
12.238	alpha-Thujene	2.34
12.664	alpha-Pinene	17.04
13.476	alpha-Fenchene	0.23
13.575	Camphene	1.41
14.590	n-Heptanol	0.01
14.761	Unidentified	0.01
14.849	Sabinene	0.02
15.160	beta-Pinene	0.03
15.456	6-Methyl hept-5-en-2-one	0.08
15.783	Myrcene	0.06
15.954	Sulcatol	0.04
16.315	Unidentified	0.01
16.420	Unidentified	0.03
16.608	Unidentified	0.01
16.868	alpha-Phellandrene	0.04
17.018	delta-3-Carene	7.67
17.396	1,4-Cineole	0.01
17.529	alpha-Terpinene	0.20
17.684	ortho-Cymene	0.01
18.017	para-Cymene	4.65
18.329	Limonene	13.48
18.439	beta-Phellandrene	1.72
18.539	1,8-Cineole	36.38
18.700	cis-beta-Ocimene	0.02
19.397	trans-beta-Ocimene	0.18
20.200	gamma-Terpinene	0.72
21.011	trans-Sabinene hydrate	0.02
22.016	Terpinolene	0.06
22.250	Fenchone	0.01
22.968	Linalool	0.07
24.337	alpha-Fenchol	0.01
26.267	Camphor	8.65
27.983	Borneol	0.08
28.971	Cryptone	0.04
29.583	alpha-Terpineol	4.55
36.566	Unidentified	0.03
44.557	beta-Caryophyllene	0.01
		100.00

This report is valid for 1 year from the analyzed date.

Chromatogram White Camphor Oil - Barefut



Comments:

The analysis of this Camphor Oil, White batch sample meets the expected chemical profile for authentic essential oil of *Cinnamomum camphora*. No contamination or adulteration was detected.