

Sample Information

Analyzed by : Dr. Robert S. Pappas
 Analyzed : 4/24/2019 10:01:35 PM
 Sample Type : Essential Oil
 Sample Name : Blue Tansy - Barefut
 Sample ID : 0102
 Injection Volume : 0.10
 Instrument ID : GC-4

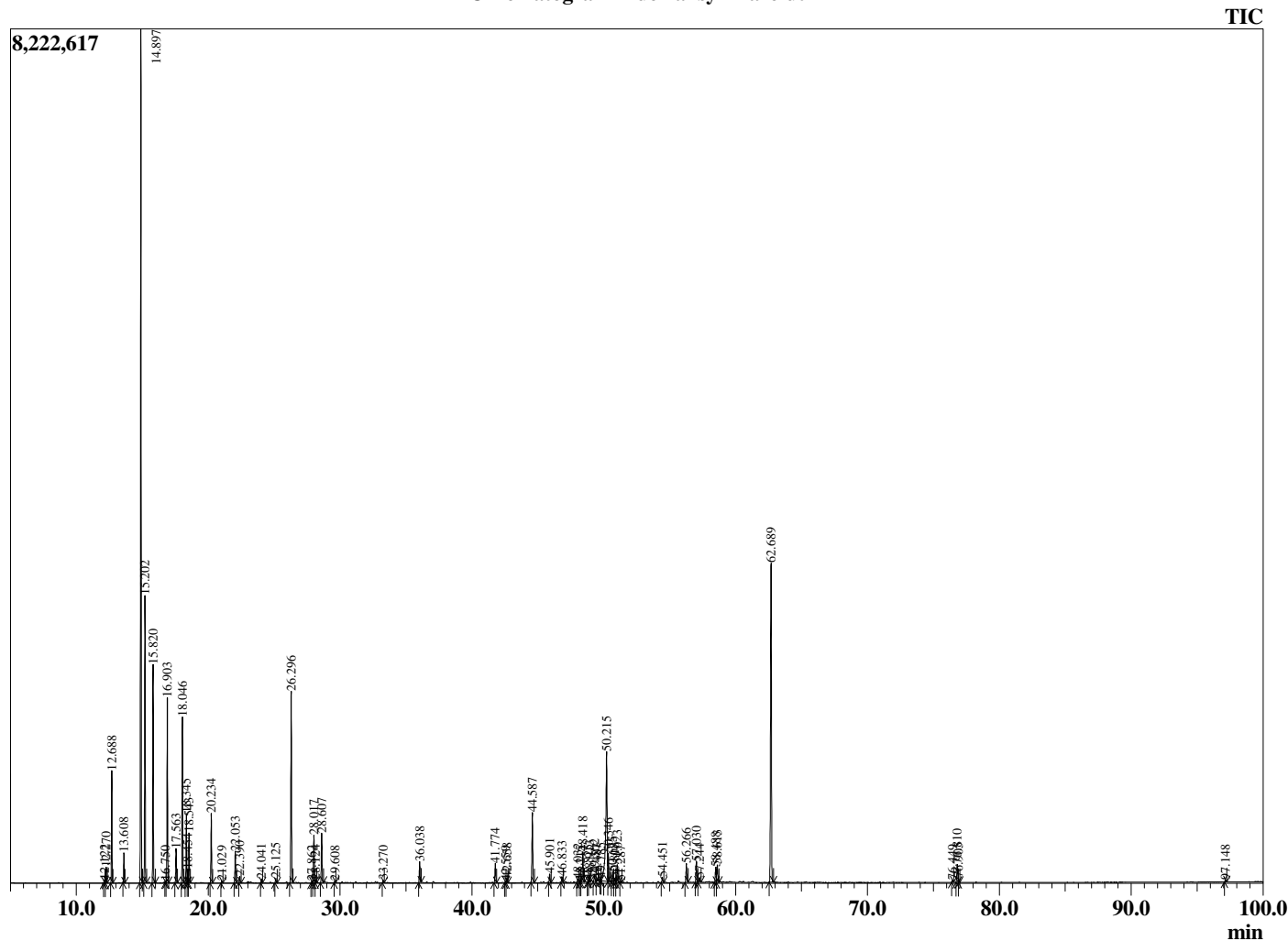


Peak Report TIC

R.Time	Name	Area%
12.122	Tricyclene	0.08
12.270	alpha-Thujene	0.37
12.688	alpha-Pinene	2.69
13.608	Camphene	0.75
14.897	Sabinene	22.69
15.202	beta-Pinene	7.56
15.820	Myrcene	5.65
16.750	Pseudolimonene	0.05
16.903	alpha-Phellandrene	4.97
17.563	alpha-Terpinene	0.93
18.046	para-Cymene	4.55
18.345	Limonene	1.94
18.454	beta-Phellandrene	0.38
18.543	1,8-Cineole	1.44
20.234	gamma-Terpinene	1.97
21.029	trans-Sabinene hydrate	0.04
22.053	Terpinolene	0.94
22.390	6,7-Epoxyterpinene	0.22
24.041	Unidentified	0.12
25.125	4-Acetyl-1-methylcyclohexene	0.14
26.296	Camphor	6.16
27.862	Unidentified	0.06
28.017	Borneol	1.56
28.124	Unidentified	0.08
28.607	Terpinen-4-ol	1.63
29.608	alpha-Terpineol	0.07
33.270	Unidentified	0.07
36.038	Thymol	0.67
41.774	alpha-Copaene	0.69
42.559	beta-Cubebene	0.05
42.658	beta-Elementene	0.15
44.587	beta-Caryophyllene	2.48
45.901	trans-beta-Farnesene	0.31
46.833	alpha-Humulene	0.21
48.032	trans-Cadina-1(6),4-diene	0.12
48.215	gamma-Curcumene	0.05
48.418	Germacrene D	1.12
48.825	Unidentified	0.05
48.913	beta-Selinene	0.25
49.302	Bicyclogermacrene	0.28
49.487	alpha-Murolene	0.08
49.785	Unidentified	0.09
50.215	3,6-Dihydrochamazulene	8.12
50.346	DLhydrochamazulene isomer	1.02
50.675	delta-Cadinene	0.39
50.818	DLhydrochamazulene isomer	0.18
51.023	beta-Sesquiphellandrene	0.64
51.287	Unidentified	0.05
54.451	Caryophyllene oxide	0.18
56.266	5,6-Dihydrochamazulene	0.67
57.030	Unidentified	0.74
57.244	Eremoligenol isomer	0.14
58.488	7,12-Dehydro-5,6,7,8-tetrahydrochamazulene	0.57
58.613	alpha-Eudesmol	0.74
62.689	Chamazulene	11.91
76.449	Unidentified	0.07
76.810	Unidentified	0.71
76.905	Unidentified	0.11
97.148	Unidentified	0.07
		100.00

This report is valid for 1 year from the analyzed date.

Chromatogram Blue Tansy - Barefut



Comments:

The analysis of this Blue Tansy batch sample meets the expected chemical profile for authentic essential oil of *Tanacetum annuum*. No contamination or adulteration was detected.