

Sample Information

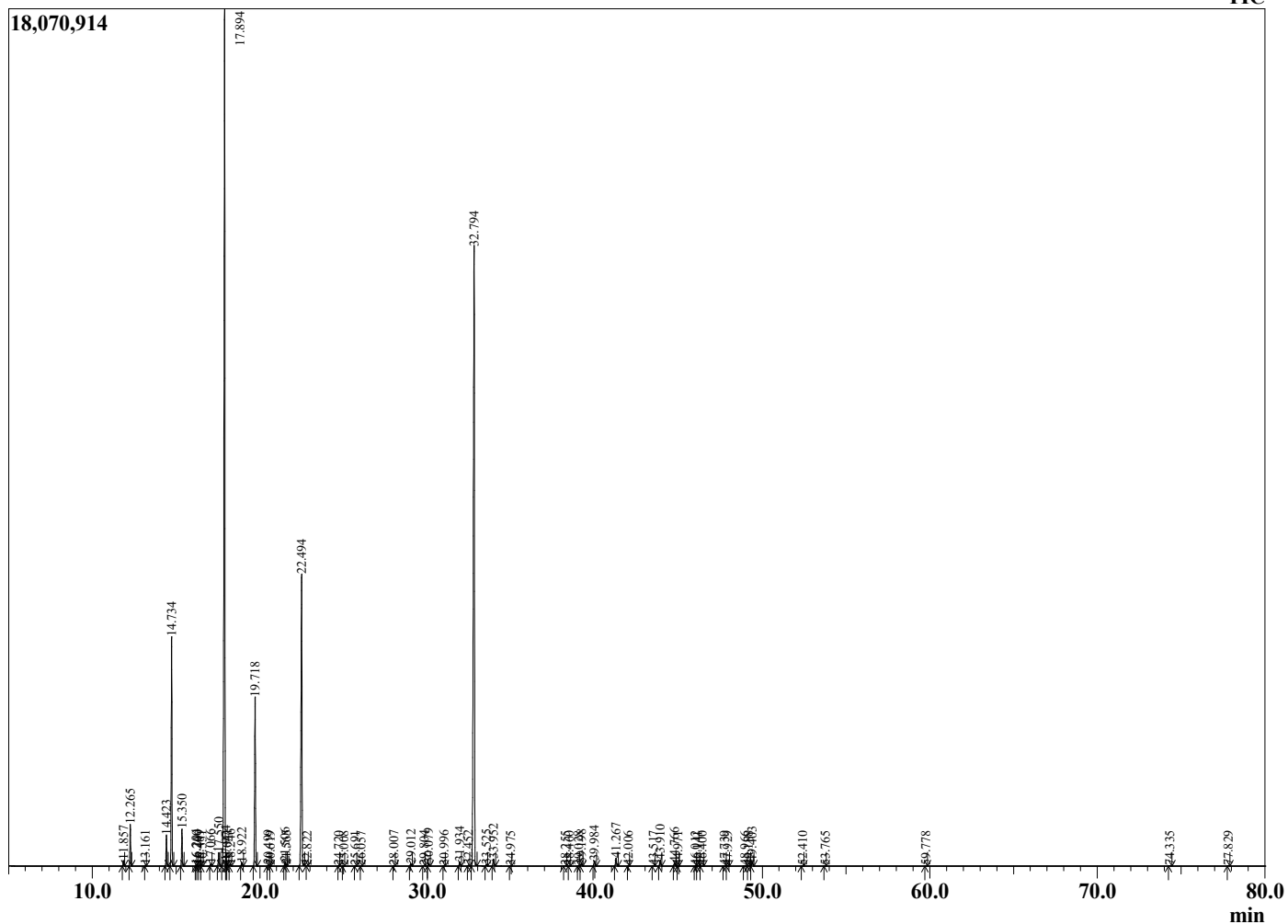
Analyzed by : Dr. Robert S. Pappas  
 Analyzed : 10/20/2022 11:03:58 PM  
 Sample Type : Essential Oil  
 Sample Name : Bergamot Oil - Barefut  
 Sample ID : 0108  
 Injection Volume : 0.10  
 Instrument ID : GC-4



Peak Report TIC

R.Time	Name	Area%
11.857	alpha-Thujene	0.17
12.265	alpha-Pinene	1.27
13.161	Camphene	0.02
14.423	Sabinene	1.04
14.734	beta-Pinene	7.68
15.350	Myrcene	1.20
16.204	Octanal	0.05
16.240	Pseudolimonene	0.02
16.409	alpha-Phellandrene	0.02
16.551	delta-3-Carene	0.03
17.066	alpha-Terpinene	0.08
17.550	para-Cymene	0.51
17.894	Limonene	35.39
17.974	beta-Phellandrene	0.14
18.041	1,8-Cineole	0.04
18.246	cis-beta-Ocimene	0.05
18.922	trans-beta-Ocimene	0.13
19.718	gamma-Terpinene	6.29
20.499	cis-Linalool oxide (furanoid)	0.04
20.619	Pinol	0.01
21.506	Terpinolene	0.16
21.565	trans-Linalool oxide (furanoid)	0.02
22.494	Linalool	12.59
22.822	Nonanal	0.01
24.720	cis-Limonene oxide	0.01
25.008	trans-Limonene oxide	0.01
25.691	Camphor	0.01
26.057	Citronellal	0.01
28.007	Terpinen-4-ol	0.02
29.012	alpha-Terpineol	0.09
29.804	Decanal	0.03
30.079	Octyl acetate	0.09
30.996	Nerol	0.02
31.934	Neral	0.16
32.452	Unidentified	0.03
32.794	Linalyl acetate	30.76
33.525	Unidentified	0.06
33.952	Geranial	0.30
34.975	Unidentified	0.01
38.255	Unidentified	0.01
38.460	delta-Elementene	0.01
39.028	Unidentified	0.01
39.198	alpha-Terpinyl acetate	0.08
39.984	Neryl acetate	0.23
41.267	Geranyl acetate	0.34
42.006	beta-Elementene	0.01
43.517	cis-alpha-Bergamotene	0.01
43.910	trans-beta-Caryophyllene	0.28
44.766	trans-alpha-Bergamotene	0.15
44.971	Unidentified	0.01
46.012	trans-beta-Farnesene	0.01
46.141	alpha-Humulene	0.01
46.400	beta-Santalene	0.01
47.739	Germacrene D	0.01
47.929	trans-beta-Bergamotene	0.01
48.966	cis-alpha-Bisabolene	0.01
49.188	trans,trans-alpha-Farnesene	0.01
49.403	beta-Bisabolene	0.20
52.410	Germacrene B	0.01
53.765	Caryophyllene oxide	0.00
59.778	alpha-Bisabolol	0.00
74.335	Citropten	0.02

Chromatogram Bergamot Oil - Barefut



Comments:

The analysis of this Bergamot batch sample meets the expected chemical profile for authentic essential oil of *Citrus bergamia*. No contamination or adulteration was detected. The results provided in this GCMS quality analysis reflect the chemical composition of the oil and lot referenced above on the date of analysis.

R.Time Name  
77.829 Bergaptene

Area%  
0.02  
100.00