

Sample Information

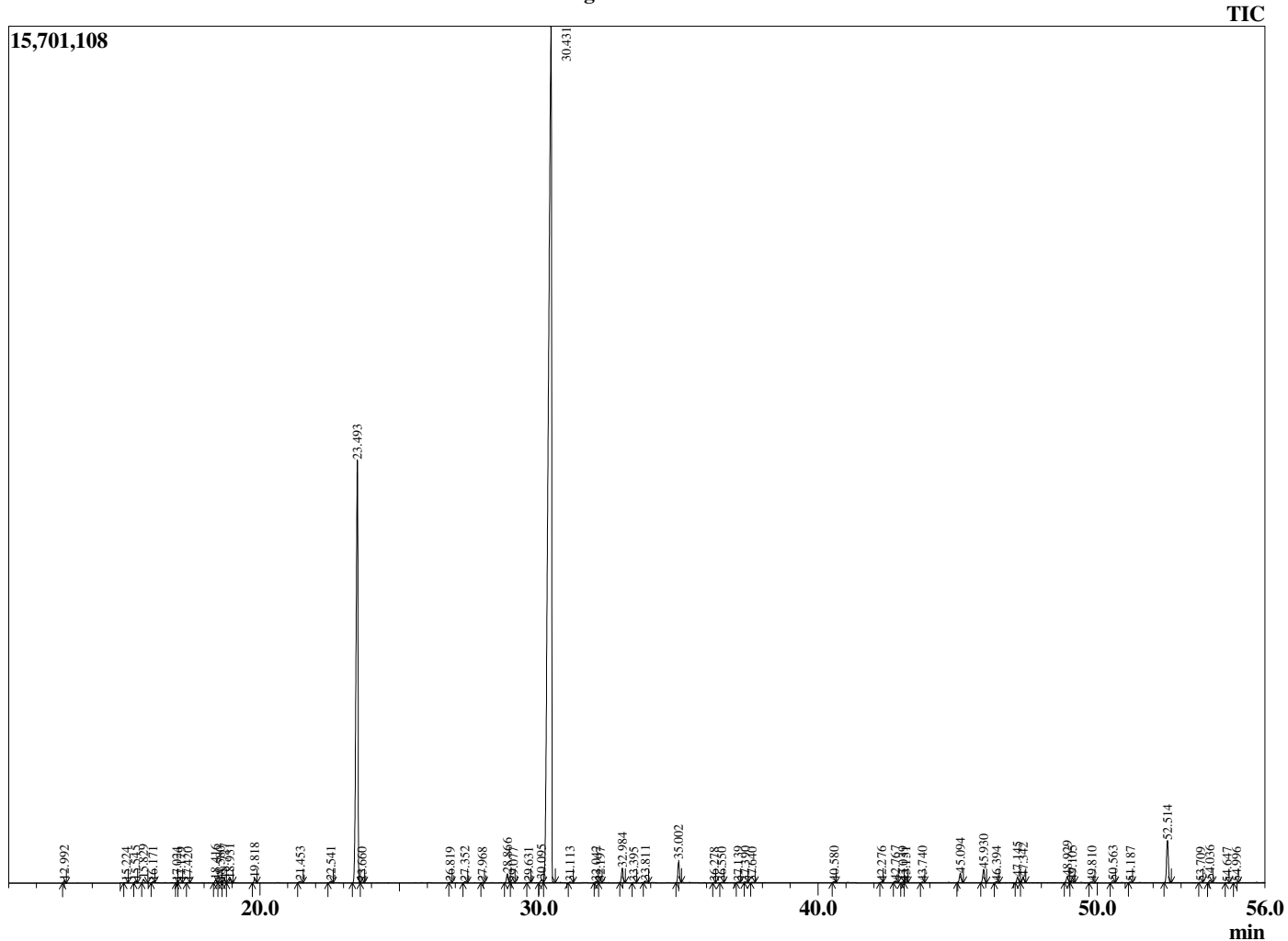
Analyzed by : Dr. Robert S. Pappas
 Analyzed : 10/1/2020 9:16:37 AM
 Sample Type : Essential Oil
 Sample Name : Basil Oil-Barefut
 Sample ID : 0106
 Injection Volume : 0.10
 Instrument ID : GC-3



Peak Report TIC

R.Time	Name	Area%
4.234	3-MethylButanal	0.01
12.992	alpha-Pinene	0.08
15.224	Sabinene	0.02
15.545	beta-Pinene	0.06
15.829	6-methyl-Hept-5-en-2-one	0.16
16.171	Myrcene	0.04
17.024	Octanal	0.02
17.179	Unidentified	0.02
17.420	delta-3-Carene	0.01
18.416	para-Cymene	0.11
18.580	2-Ethyl hexanol	0.04
18.727	Limonene	0.15
18.931	1,8-cineole	0.16
19.818	(E)-beta-Ocimene	0.18
21.453	cis Linalool oxide (furanoid)	0.08
22.541	trans Linalool oxide (furanoid)	0.06
23.493	Linalool	20.74
23.660	Unidentified	0.03
26.819	trans-Chrysanthamal	0.01
27.352	Menthone	0.05
27.968	Isomenthone	0.02
28.866	Menthol	0.39
29.077	Terpinen-4-ol	0.03
29.631	cis-3-Hexenyl butyrate	0.02
30.095	beta-Terpineol	0.17
30.431	Methyl chavicol	71.04
31.113	Octyl acetate	0.03
32.042	Nerol	0.04
32.197	Citronellol	0.02
32.984	Neral	0.59
33.395	Carvone	0.02
33.811	Geraniol	0.08
35.002	Geranial	0.89
36.278	(E)-Anethole	0.01
36.550	Unidentified	0.02
37.139	Unidentified	0.03
37.390	Unidentified	0.03
37.640	Unidentified	0.02
40.580	Eugenol	0.04
42.276	alpha-Copaene	0.02
42.767	Unidentified	0.07
43.039	7-epi-Sesquithujene	0.03
43.151	beta-Elemene	0.03
43.740	Methyleugenol	0.03
45.094	beta-Caryophyllene	0.44
45.930	trans-alpha-Bergamotene	0.60
46.394	(Z)-beta-Farnesene	0.06
47.145	(E)-beta-Farnesene	0.24
47.342	alpha-Humulene	0.24
48.929	Germacrene D	0.31
49.105	beta-Sesquiphellandrene isomer	0.09
49.810	Bicyclogermacrene	0.06
50.563	beta-Bisabolene	0.09
51.187	delta-Cadinene	0.03
52.514	trans-alpha-Bisabolene	1.96
53.709	trans-Nerolidol	0.02
54.036	para-Methoxycinnamaldehyde	0.11
54.647	Spathulenol	0.02
54.996	Caryophyllene oxide	0.03
		100.00

Chromatogram Basil Oil-Barefut



Comments:

The analysis of this Basil ct Methyl chavicol batch sample meets the expected chemical profile for authentic essential oil of *Ocimum basilicum*. No contamination or adulteration was detected.

The results provided in this GCMS quality analysis reflect the chemical composition of the oil and lot referenced above on the date of analysis.

©Copyright 2020 by Essential Oil University. All rights reserved. Any publishing, copying, use, dissemination, or distribution of this report, including online, without the express written permission of Essential Oil University is strictly prohibited.