

Sample Information

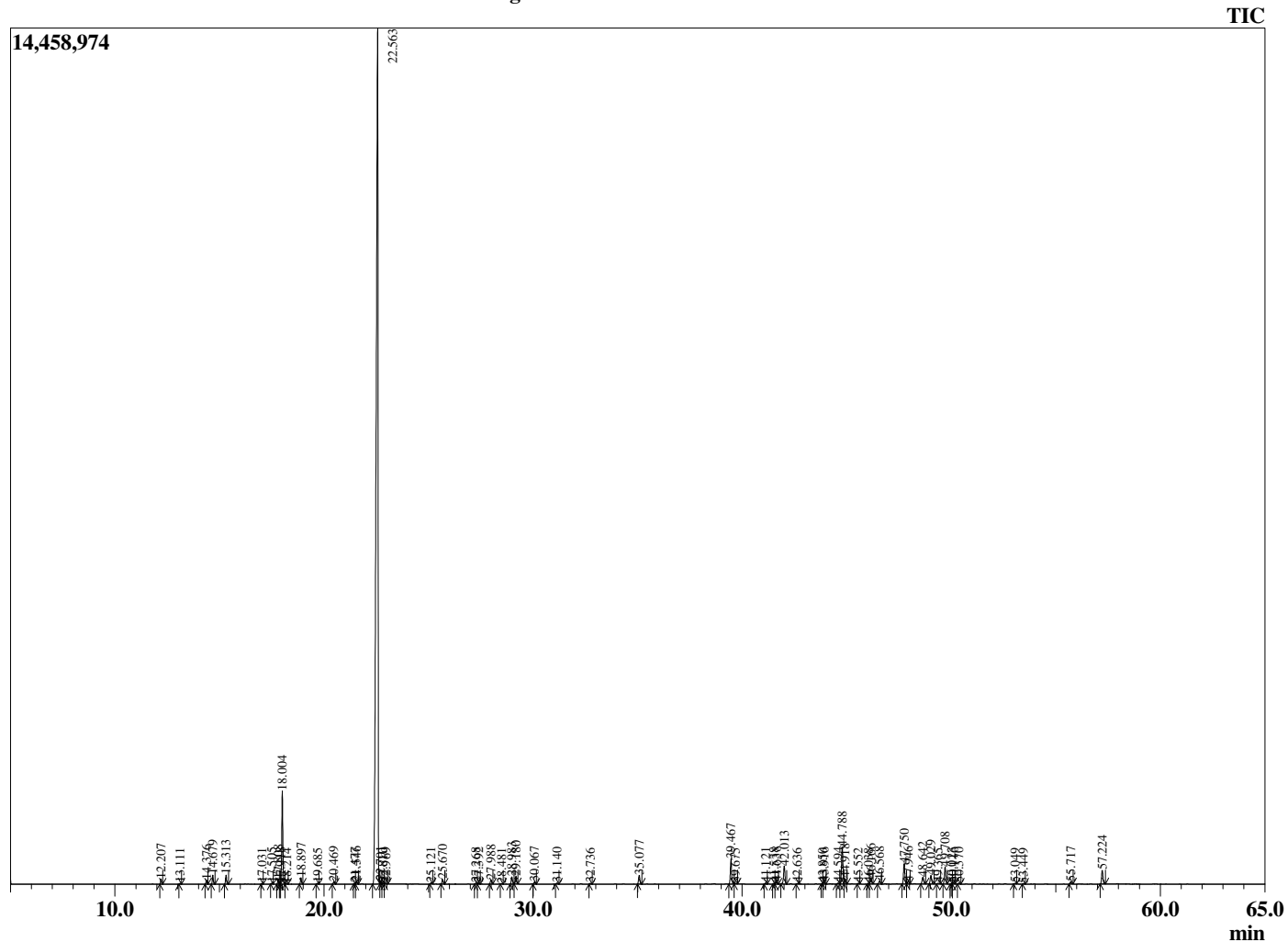
Analyzed by : Dr. Robert S. Pappas  
 Analyzed : 3/29/2019 7:31:16 AM  
 Sample Type : Essential Oil  
 Sample Name : Sweet Basil ct Linalool - Barefut  
 Sample ID : 0105  
 Injection Volume : 0.10  
 Instrument ID : GC-3



Peak Report TIC

R.Time	Name	Area%
12.207	alpha-Pinene	0.23
13.111	Camphene	0.05
14.376	Sabinene	0.21
14.679	beta-Pinene	0.44
15.313	Myrcene	0.45
17.031	alpha-Terpinene	0.03
17.505	para-Cymene	0.05
17.808	Limonene	0.23
17.918	beta-Phellandrene	0.04
18.004	1,8-Cineole	4.87
18.214	cis-beta-Ocimene	0.03
18.897	trans-beta-Ocimene	0.31
19.685	gamma-Terpinene	0.05
20.469	trans-Sabinene	0.14
21.477	Terpinolene	0.06
21.546	trans-Linalool oxide (furanoid)	0.14
22.563	Linalool	78.12
22.701	Hotrienol	0.17
22.810	Unidentified	0.05
22.969	1-Octen-3-yl acetate	0.06
25.121	cis-Myroxide	0.07
25.670	Camphor	0.27
27.268	delta-Terpineol	0.06
27.392	Borneol	0.06
27.988	Terpinen-4-ol	0.25
28.481	Unidentified	0.03
28.983	alpha-Terpineol	0.43
29.180	Estragole	0.46
30.067	Octyl acetate	0.13
31.140	Citronellol	0.06
32.736	Geraniol	0.05
35.077	Bornyl acetate	0.53
39.467	Eugenol	1.56
39.675	Unidentified	0.05
41.121	alpha-Copaene	0.06
41.538	beta-Elemene isomer	0.07
41.638	beta-Bourbonene	0.13
42.013	beta-Elemene	1.22
42.636	Methyleugenol	0.04
43.850	Unidentified	0.03
43.916	beta-Caryophyllene	0.11
44.594	beta-Gurjunene (calarene)	0.07
44.788	trans-alpha-Bergamotene	2.47
44.918	alpha-Guaiene	0.34
45.552	cis-Murrola-3,5-diene	0.03
46.038	trans-beta-Farnesene	0.03
46.166	alpha-Humulene	0.35
46.568	cis-Cadina-1(6),4-diene	0.19
47.750	Germacrene D	1.32
47.946	Unidentified	0.15
48.642	Bicyclogermacrene	0.51
49.029	alpha-Bulnesene	0.58
49.365	Unidentified	0.07
49.708	gamma-Cadinene	1.11
50.023	delta-Cadinene	0.06
50.116	cis-Calamenene	0.08
50.370	beta-Sesquiphellandrene	0.07
53.049	Unidentified	0.05
53.449	Spathulenol	0.03
55.717	1,10-di-epi-Cubenol	0.15
57.224	alpha-Muurolol (=Torreyol)	0.92
		100.00

Chromatogram Sweet Basil ct Linalool - Barefut



**Comments:**  
 The analysis of this Sweet Basil ct. Linalool batch sample meets the expected chemical profile for authentic essential oil of *Ocimum basilicum*. No contamination or adulteration was detected.