

Sample Information

Analyzed by : Dr. Robert S. Pappas
 Analyzed : 7/3/2019 7:59:47 PM
 Sample Type : Essential Oil
 Sample Name : Australian Balm Mint Bush
 Sample ID : 0102
 Injection Volume : 0.10
 Instrument ID : GC-3

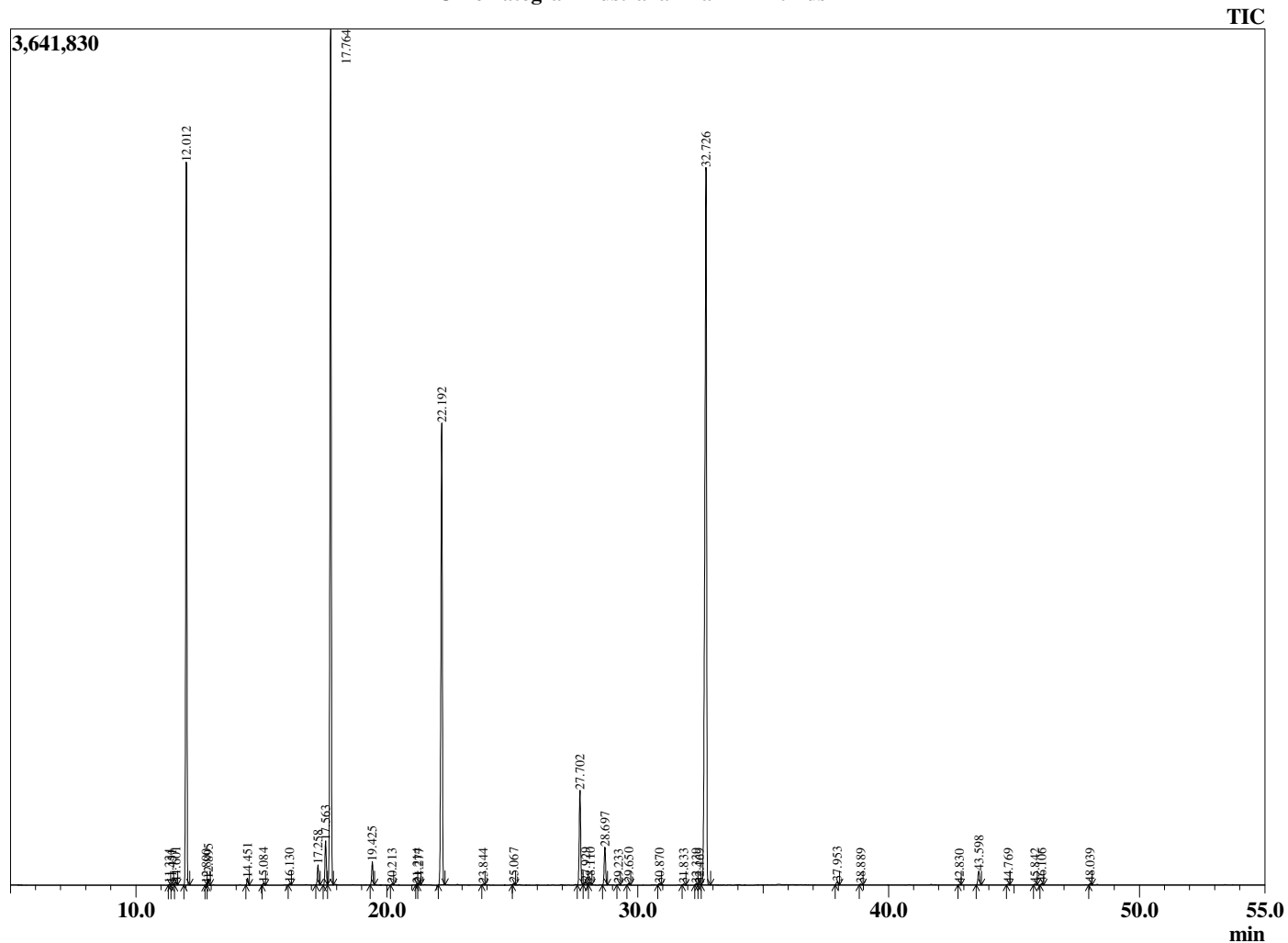


Peak Report TIC

R.Time	Name	Area%
11.334	Hashishene	0.02
11.451	Tricyclene	0.02
11.601	alpha-Thujene	0.07
12.012	alpha-Pinene	18.95
12.800	alpha-Fenchene	0.01
12.895	Camphene	0.16
14.451	beta-Pinene	0.20
15.084	Myrcene	0.05
16.130	alpha-Phellandrene	0.04
17.258	para-Cymene	0.59
17.563	Limonene	1.39
17.764	1,8-cineole	26.22
19.425	gamma-Terpinene	0.70
20.213	cis-Linalool oxide (furanoid)	0.03
21.214	Terpinolene	0.03
21.277	trans-Linalool oxide (furanoid)	0.05
22.192	Linalool	15.56
23.844	cis-para-Menth-2-en-1-ol	0.03
25.067	trans-para-Menth-2-en-1-ol	0.05
27.702	Terpinen-4-ol	3.23
27.929	Unidentified	0.09
28.110	para-Cymen-8-ol	0.07
28.697	alpha-Terpineol	1.30
29.233	alpha-Phellandrene epoxide	0.02
29.650	trans-Piperitol	0.06
30.870	Citronellol	0.05
31.833	Methyl phenethyl ketone	0.03
32.339	Unidentified	0.04
32.469	Lavandulol	0.02
32.726	Piperitone	30.01
37.953	delta-Elementene	0.11
38.889	alpha-Terpinyl acetate	0.03
42.830	alpha-Gurjunene	0.02
43.598	beta-Caryophyllene	0.53
44.769	beta-Copaene	0.03
45.842	alpha-Humulene	0.04
46.106	Alloaromadendrene	0.06
48.039	Viridiflorene (Ledene)	0.05
		100.00

This report is valid for 1 year from the analyzed date.

Chromatogram Australian Balm Mint Bush



Comments:

The analysis of this Australian Balm Mint Bush batch sample meets the expected chemical profile for authentic essential oil of *Prostanthera melissifolia*. No contamination or adulteration was detected.