

Sample Information

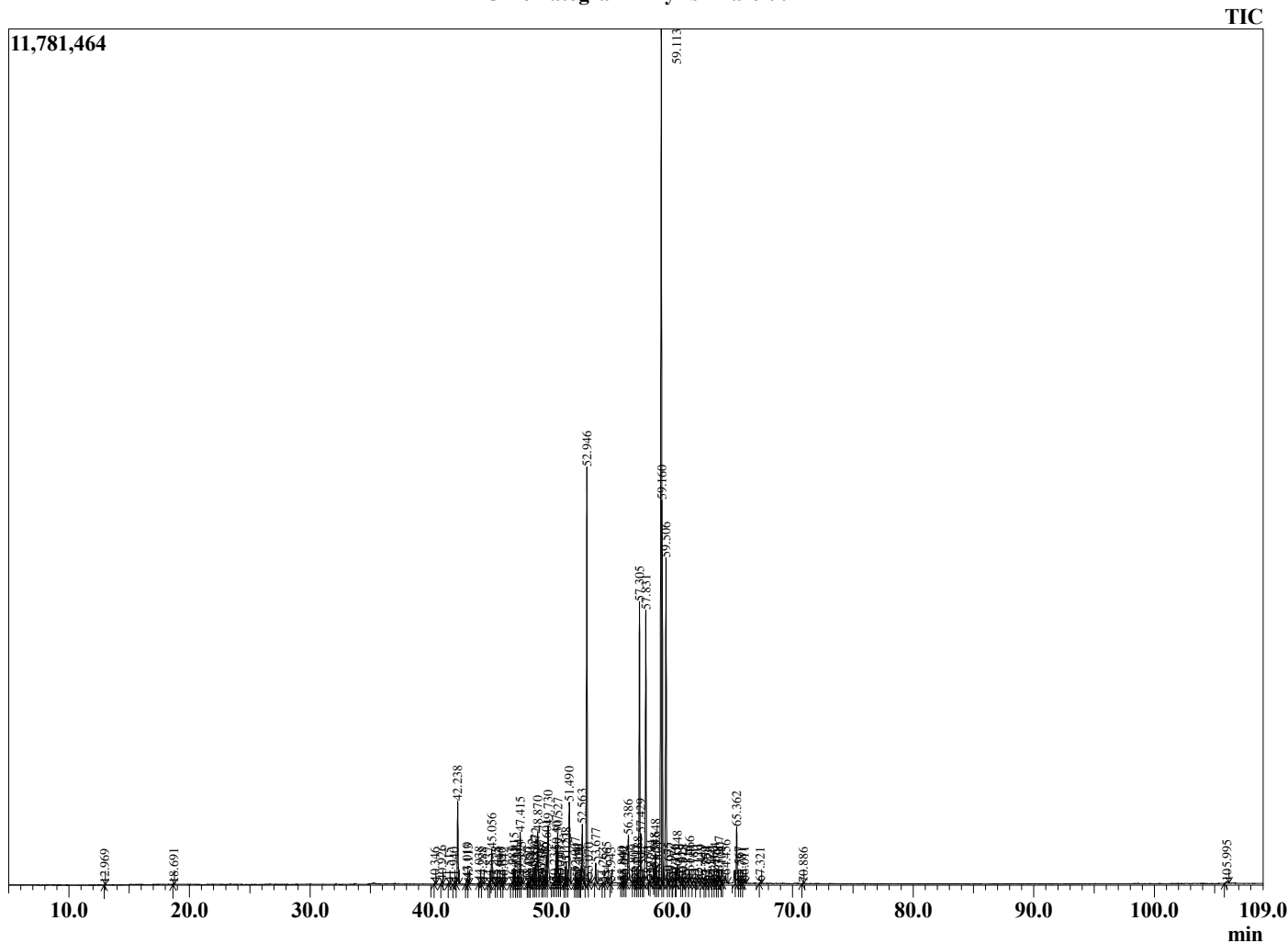
Analyzed by : Dr. Robert S. Pappas
 Analyzed : 11/20/2020 1:31:08 AM
 Sample Type : Essential Oil
 Sample Name : Amyris - Barefut
 Sample ID : 0110
 Injection Volume : 0.10
 Instrument ID : GC-3



Peak Report TIC

R.Time	Name	Area%
12.969	alpha-Pinene	0.01
18.691	Limonene	0.01
40.346	alpha-Cubebene	0.03
40.926	Unidentified	0.07
41.515	Unidentified	0.02
41.940	Unidentified	0.03
42.238	alpha-Copaene	2.02
43.010	beta-Copaene	0.19
43.113	beta-Elemene	0.11
44.038	Unidentified	0.05
44.288	Unidentified	0.06
44.837	Unidentified	0.02
45.056	trans-beta-Caryophyllene	0.92
45.428	Unidentified	0.05
45.647	Unidentified	0.03
45.890	trans-alpha-Bergamotene	0.04
46.042	Unidentified	0.03
46.785	epi-beta-Santalene	0.07
46.915	alpha-Acoradiene	0.41
47.111	(E)-beta-Farnesene	0.06
47.304	alpha-Humulene	0.30
47.415	beta-Acoradiene	1.37
47.523	Unidentified	0.17
48.057	Unidentified	0.06
48.180	Unidentified	0.02
48.412	Unidentified	0.28
48.607	trans-Cadina-1(6),4-diene	0.27
48.672	gamma-Curcumene	0.54
48.870	Ar-Curcumene	1.32
49.067	Unidentified	0.25
49.265	Unidentified	0.05
49.385	beta-Selinene	0.16
49.601	Valencene	0.73
49.730	alpha-Zingiberene	1.98
50.234	Unidentified	0.02
50.407	4-epi-cis-Dihydroagarofuran	0.83
50.527	beta-Bisabolene	1.22
50.677	Dihydroagarofuran isomer	0.25
50.797	Unidentified	0.02
51.151	delta-Cadinene	0.37
51.228	(-)-alpha-Panasinsen	0.57
51.490	beta-Sesquiphellandrene	2.13
52.007	Unidentified	0.27
52.141	Unidentified	0.16
52.276	Unidentified	0.10
52.374	Unidentified	0.05
52.563	Selina-3,7(11)-diene	1.55
52.946	Elemol	10.62
53.070	Unidentified	0.17
53.677	Nerolidol	0.52
54.263	Unidentified	0.02
54.565	Unidentified	0.16
54.943	Caryophyllene oxide	0.03
55.840	Unidentified	0.04
55.992	Unidentified	0.06
56.094	Unidentified	0.03
56.386	5-epi-7-epi-Eudesmol	1.71
56.809	Zingiberenol	0.13
57.011	Unidentified	0.08
57.188	8-epi-gamma-Eudesmol	0.20
57.305	10-epi-gamma-Eudesmol	7.53
57.429	Guaiol	1.29

Chromatogram Amyris - Barefut



Comments:

The analysis of this Amyris batch sample meets the expected chemical profile for authentic essential oil of *Amyris balsamifera*. No contamination or adulteration was detected. The results provided in this GCMS quality analysis reflect the chemical composition of the oil and lot referenced above on the date of analysis.

R.Time	Name	Area%
57.594	Unidentified	0.03
57.831	gamma-Eudesmol	8.15
58.071	Unidentified	0.03
58.294	Hinesol	0.28
58.548	Unidentified	0.13
58.648	Unidentified	0.81
58.801	Unidentified	0.23
59.113	Valerianol	26.12
59.160	alpha-Eudesmol+beta-Eudesmol	7.97
59.506	7-epi-alpha-Eudesmol	9.14
59.675	Unidentified	0.18
59.927	Unidentified	0.20
60.176	Unidentified	0.16
60.311	Unidentified	0.05
60.448	Unidentified	0.77
60.829	Unidentified	0.10
60.918	Unidentified	0.15
61.316	Unidentified	0.10
61.466	Unidentified	0.43
61.780	Unidentified	0.10
62.120	Unidentified	0.10
62.419	(2E,6E)-Farnesol	0.12
62.769	Unidentified	0.04
62.854	Unidentified	0.06
63.179	Unidentified	0.03
63.460	Unidentified	0.05
63.554	Unidentified	0.15
63.778	Unidentified	0.04
63.907	Unidentified	0.36
64.104	Unidentified	0.04
64.456	Unidentified	0.23
65.362	Drimenol	1.53
65.567	Unidentified	0.04
65.781	Unidentified	0.03
66.011	Unidentified	0.05
67.321	Unidentified	0.03
70.886	Unidentified	0.02
105.995	Unidentified	0.09
		100.00