

Sample Information

Analyzed by : Dr. Robert S. Pappas
 Analyzed : 12/3/2018 6:10:16 PM
 Sample Type : Essential Oil
 Sample Name : Orange Oil, Sweet, Portugal
 Sample ID : Barefut-0107
 Injection Volume : 0.10
 Instrument ID : GC-3

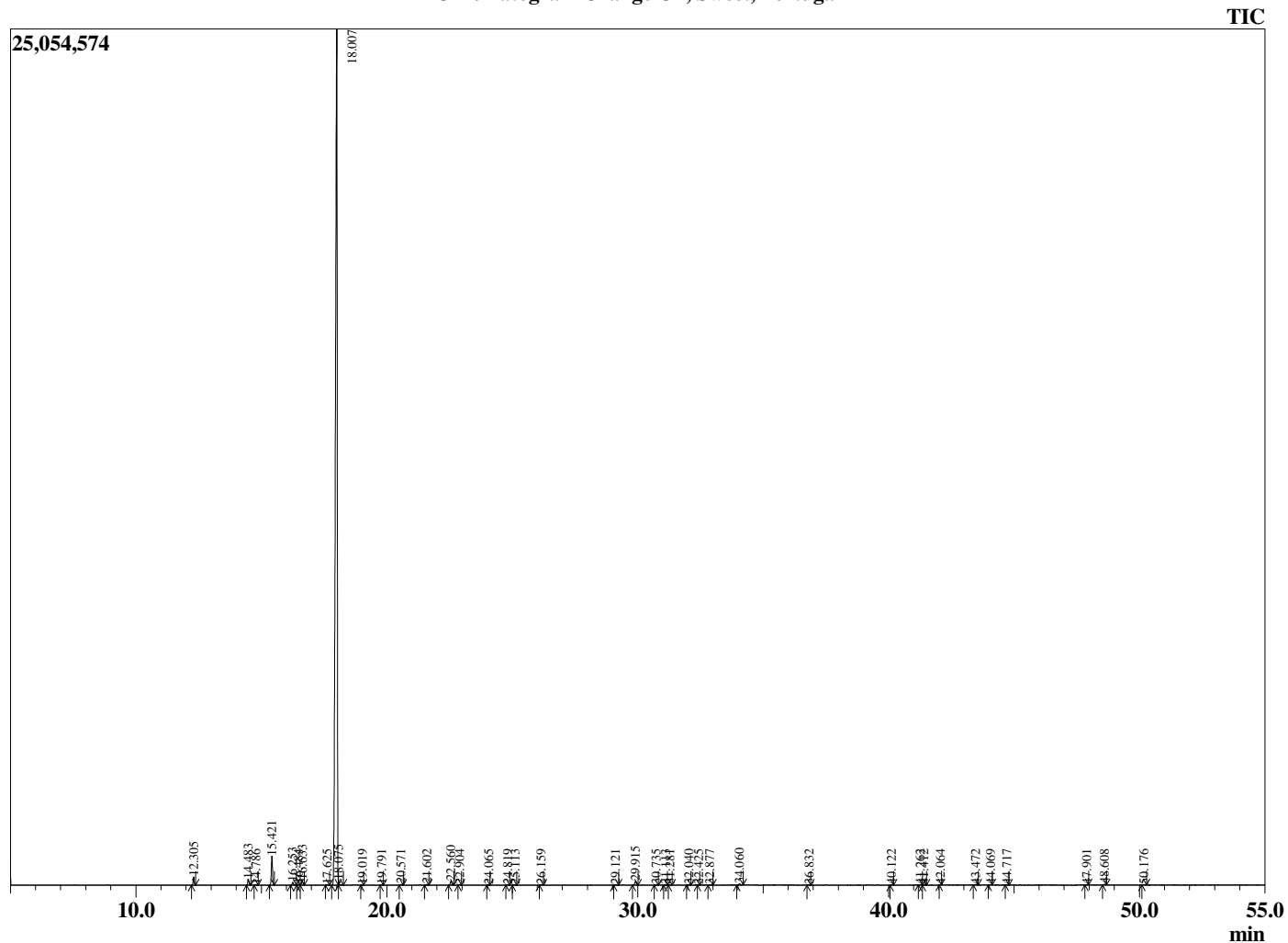


Peak Report TIC

R.Time	Name	Area%
12.305	alpha-Pinene	0.53
14.483	Sabinene	0.43
14.786	beta-Pinene	0.05
15.421	Myrcene	2.06
16.253	Octanal	0.21
16.484	alpha-Phellandrene	0.06
16.633	delta-3-Carene	0.39
17.625	para-Cymene	0.03
18.007	Limonene	94.33
18.075	beta-Phellandrene	0.21
19.019	trans-beta-Ocimene	0.02
19.791	gamma-Terpinene	0.02
20.571	n-Octanol	0.06
21.602	Terpinolene	0.06
22.560	Linalool	0.34
22.904	Nonanal	0.04
24.065	trans-para-Mentha-2,8-dienol	0.01
24.819	cis-Limonene oxide	0.02
25.113	trans-Limonene oxide	0.03
26.159	Citronellal	0.06
29.121	alpha-Terpineol	0.06
29.915	Decanal	0.36
30.735	Unidentified	0.03
31.113	Nerol	0.03
31.281	Citronellol	0.03
32.040	Neral	0.05
32.425	Carvone	0.01
32.877	Geraniol	0.04
34.060	Geranial	0.13
36.832	Undecanal	0.01
40.122	Neryl acetate	0.02
41.262	alpha-Copaene	0.03
41.412	Geranyl acetate	0.02
42.064	beta-Cubebene	0.01
43.472	Dodecanal	0.04
44.069	beta-Caryophyllene	0.03
44.717	beta-Copaene	0.02
47.901	Germacrene D	0.02
48.608	Valencene	0.08
50.176	delta-Cadinene	0.03
		100.00

This report is valid for 1 year from the analyzed date.

Chromatogram Orange Oil, Sweet, Portugal



Comments:

The analysis of this Orange Oil, Sweet batch sample meets the expected chemical profile for authentic essential oil of *Citrus sinensis*. No contamination or adulteration was detected.