

Sample Information

Analyzed by : Dr. Robert S. Pappas
 Analyzed : 5/29/2018 2:03:16 PM
 Sample Type : Essential Oil
 Sample Name : Ho Wood Oil, China
 Sample ID : Barefut-0104
 Injection Volume : 0.10
 Instrument ID : GC-3

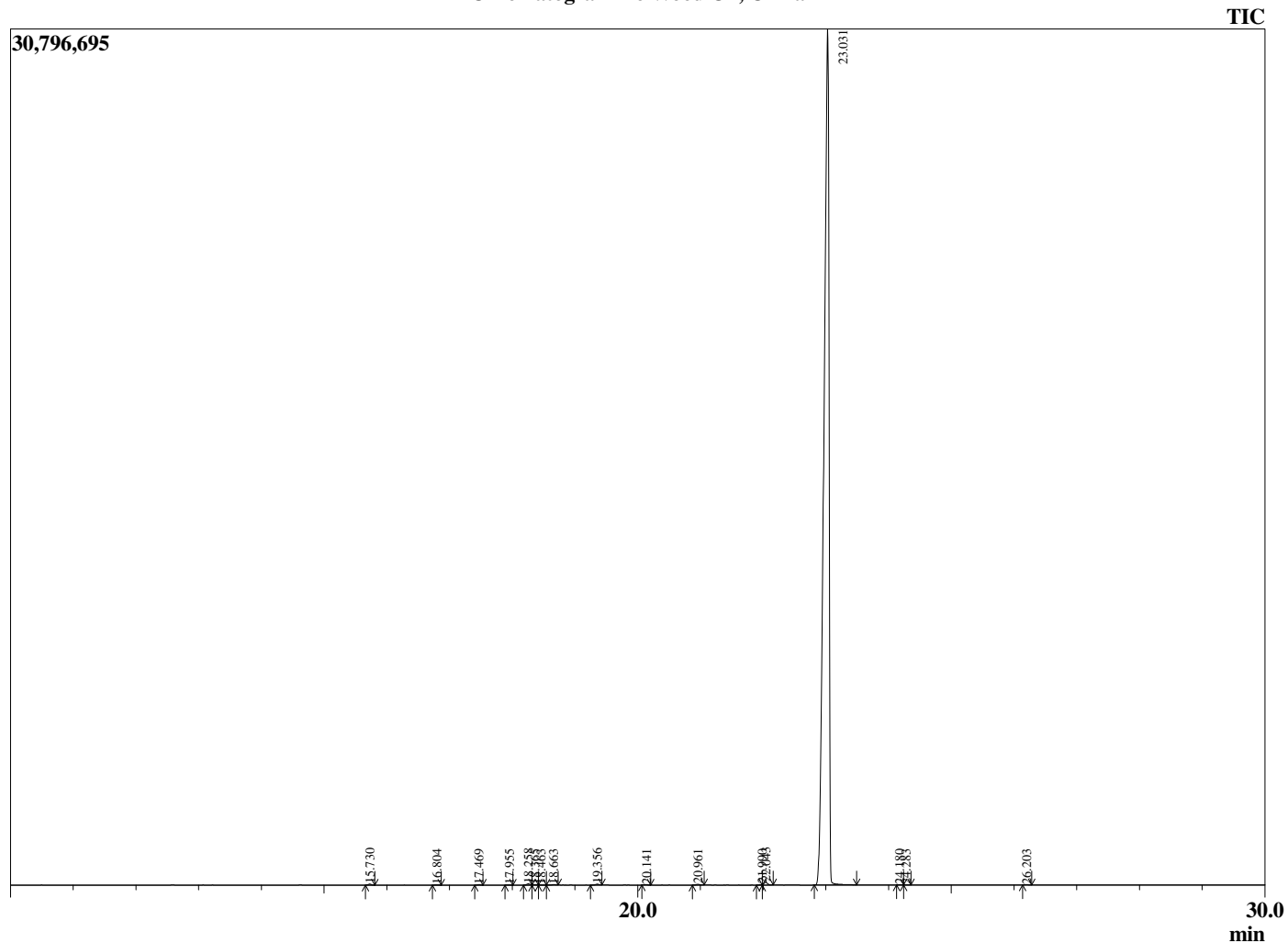


Peak Report TIC

R.Time	Name	Area%
15.730	Myrcene	0.07
16.804	alpha-Phellandrene	0.02
17.469	alpha-Terpinene	0.03
17.955	para-Cymene	0.01
18.258	Limonene	0.09
18.365	beta-Phellandrene	0.04
18.463	1,8-cineole	0.01
18.663	cis-beta-Ocimene	0.04
19.356	trans-beta-Ocimene	0.07
20.141	gamma-Terpinene	0.03
20.961	cis-Linalool oxide (furanoid)	0.06
21.990	Terpinolene	0.04
22.043	trans-Linalool oxide (furanoid)	0.23
23.031	Linalool	99.17
24.180	alpha-Thujone	0.02
24.283	alpha-Fenchol	0.01
26.203	Camphor	0.03
		100.00

This report is valid for 1 year from the analyzed date.

Chromatogram Ho Wood Oil, China



Comments:

The analysis of this Ho Wood, China batch sample meets the expected chemical profile for authentic essential oil of *Cinnamomum camphora* ct. *Linalool*. No contamination or adulteration was detected.