

Sample Information

Analyzed by : Dr. Robert S. Pappas  
 Analyzed : 10/3/2018 9:27:19 PM  
 Sample Type : Essential Oil  
 Sample Name : Clary Sage, France  
 Sample ID : Barefut-0105  
 Injection Volume : 0.10  
 Instrument ID : GC-3

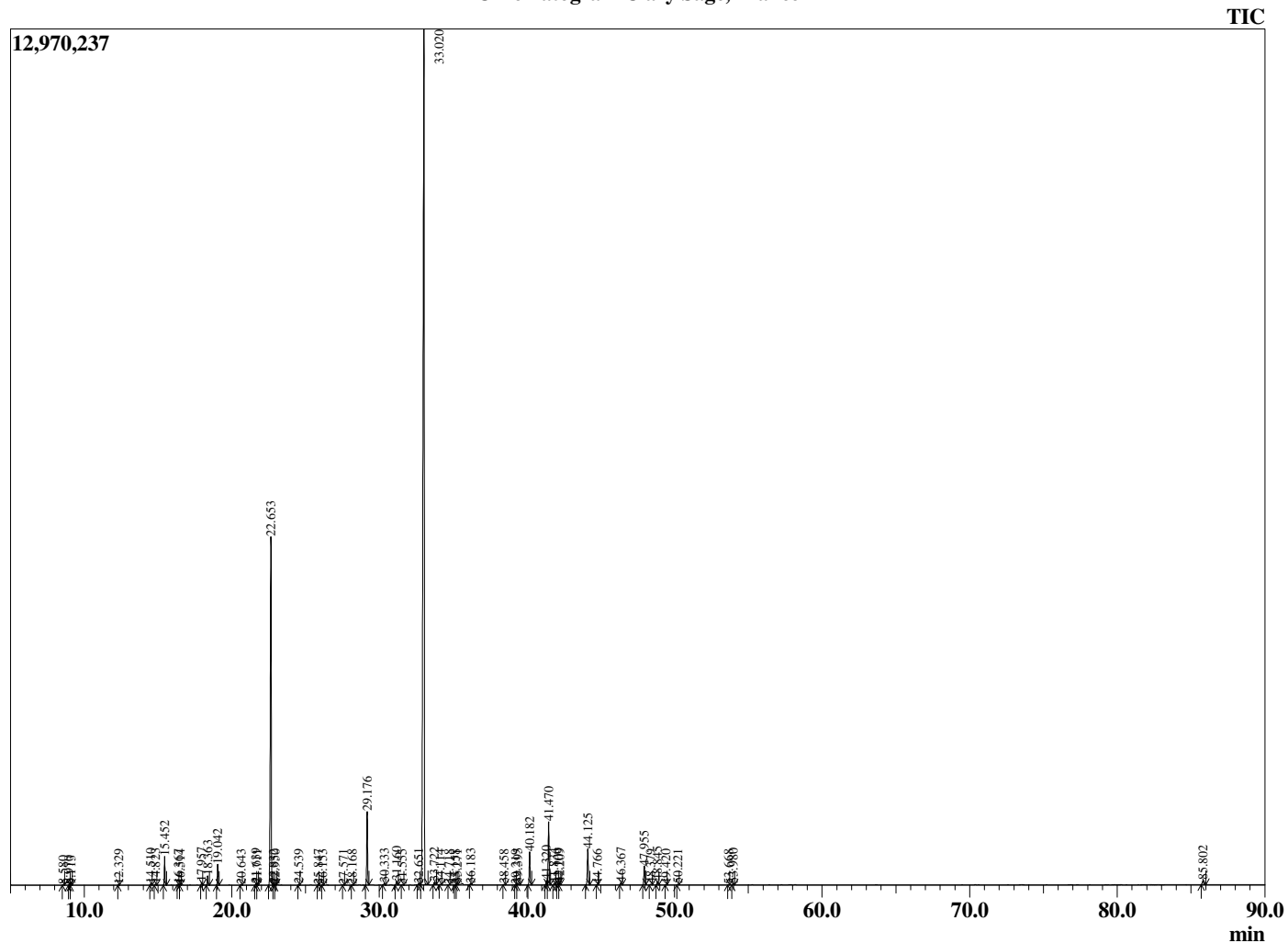


Peak Report TIC

R.Time	Name	Area%
8.580	Hex-3(Z)-enol	0.03
8.970	Hex-2(E)-enol	0.02
9.113	n-Hexanol	0.01
12.329	alpha-Pinene	0.02
14.510	Sabinene	0.06
14.823	beta-Pinene	0.06
15.452	Myrcene	1.19
16.367	Pseudolimonene	0.03
16.514	alpha-Phellandrene	0.03
17.957	Limonene	0.13
18.363	cis-beta-Ocimene	0.41
19.042	trans-beta-Ocimene	0.89
20.643	cis-Linalool oxide (furanoid)	0.03
21.639	Terpinolene	0.07
21.711	trans-Linalool oxide (furanoid)	0.04
22.653	Linalool	19.43
22.832	Hotrienol	0.05
22.950	Nonanal	0.02
24.539	allo-Ocimene	0.03
25.847	Camphor	0.02
26.153	Nerol oxide	0.01
27.571	Borneol	0.03
28.168	Terpinen-4-ol	0.02
29.176	alpha-Terpineol	3.70
30.333	Linalyl formate	0.09
31.160	Nerol	0.19
31.555	Unidentified	0.02
32.651	Unidentified	0.06
33.020	Linalyl acetate	63.50
33.722	Unidentified	0.15
34.114	Geranial	0.02
34.718	Neryl formate	0.02
35.158	Unidentified	0.02
35.271	Bornyl acetate	0.02
36.183	Geranyl formate	0.05
38.458	Unidentified	0.04
39.219	Unidentified	0.01
39.395	alpha-Terpinyl acetate	0.08
40.182	Neryl acetate	1.70
41.320	alpha-Copaene	0.24
41.470	Geranyl acetate	3.33
41.834	beta-Bourbonene	0.06
42.109	beta-Cubebene	0.06
42.209	beta-Elemene	0.07
44.125	beta-Caryophyllene	2.07
44.766	beta-Copaene	0.02
46.367	alpha-Humulene	0.13
47.955	Germacrene D	1.04
48.379	Unidentified	0.05
48.845	Bicyclogermacrene	0.20
49.420	(E,E)-alpha-Farnesene	0.02
50.221	delta-Cadinene	0.04
53.668	Spathulenol	0.02
53.980	Caryophyllene oxide	0.07
85.802	Sclareol	0.30
		100.00

This report is valid for 1 year from the analyzed date.

Chromatogram Clary Sage, France



Comments:

The analysis of this Clary Sage, France batch sample meets the expected chemical profile for authentic essential oil of *Salvia sclarea*. No contamination or adulteration was detected