

Sample Information

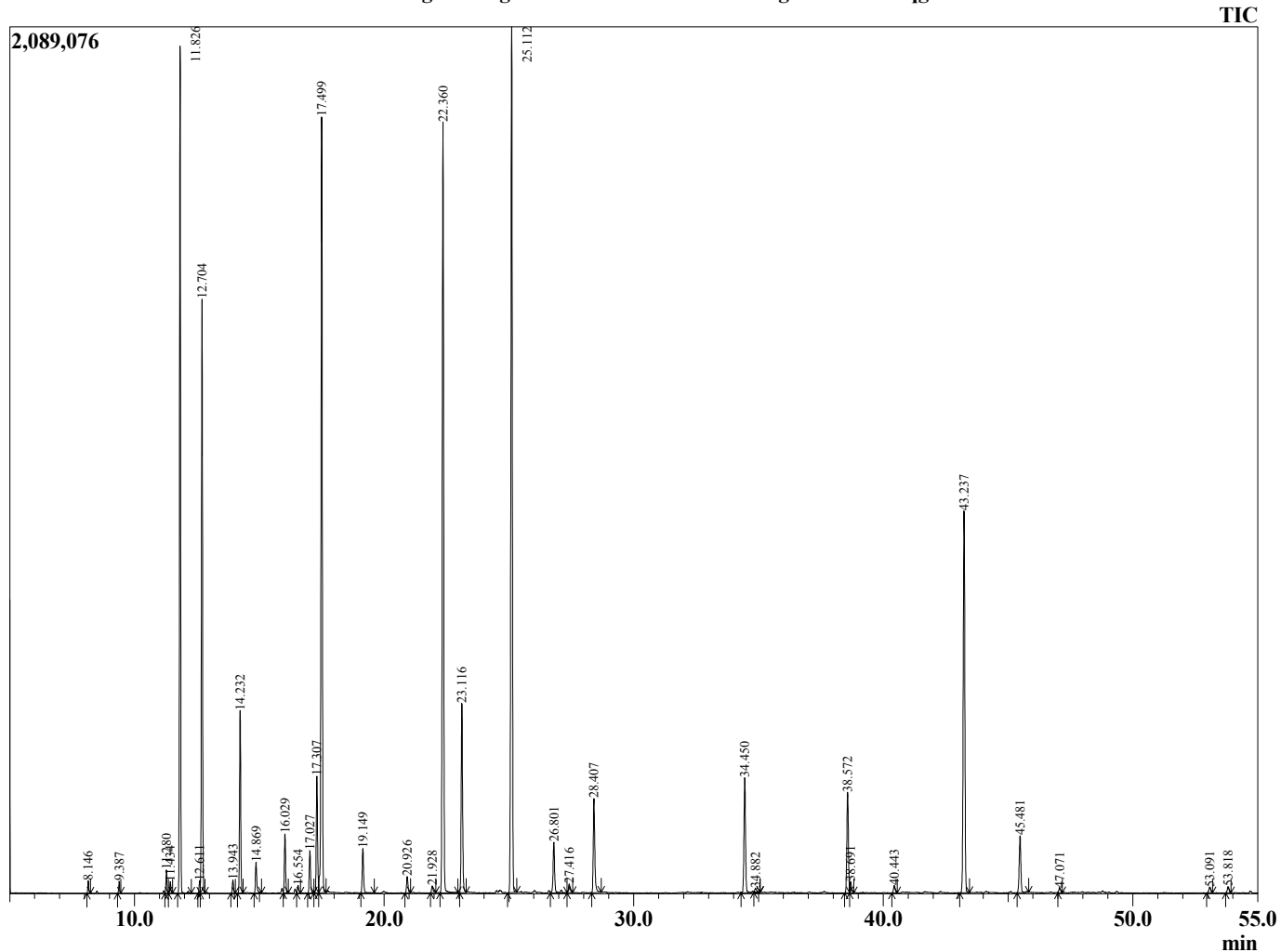
Analyzed by : Tanner Wortham  
 Analyzed : 1/9/16 7:29:03 PM  
 Sample Type : Essential Oil  
 Sample Name : Sage  
 Sample ID : B160107D  
 Injection Volume : 0.10  
 Data File : \\Mac\Home\Downloads\Sage B160107D.qgd



Peak Report TIC

R.Time	Name	Area%
8.146	Salvene <cis>	0.16
9.387	Santene	0.16
11.280	Tricyclene	0.33
11.434	Thujene <alpha->	0.17
11.826	Pinene <alpha->	12.22
12.611	Fenchene <alpha->	0.18
12.704	Camphene	8.98
13.943	Sabinene	0.21
14.232	Pinene <beta->	2.93
14.869	Myrcene	0.56
16.029	3-Carene	1.01
16.554	Terpinene <alpha->	0.15
17.027	Cymene <para->	0.78
17.307	Limonene	2.09
17.499	1,8-cineole	13.94
19.149	Terpinene <gamma->	0.85
20.926	Terpinolene	0.33
21.928	Linalool	0.16
22.360	Thujone <cis>	14.84
23.116	Thujone <trans>	3.69
25.112	Camphor	17.38
26.801	Borneol	1.09
27.416	Terpinen-4-ol	0.20
28.407	Terpineol <alpha->	2.04
34.450	Bornyl acetate	2.49
34.882	Thymol	0.11
38.572	Terpinyl acetate <alpha->	2.23
38.691	Unidentified	0.25
40.443	Copaene <alpha->	0.18
43.237	Caryophyllene <trans>	8.59
45.481	Humulene <alpha->	1.28
47.071	Germacrene D	0.12
53.091	Caryophyllene oxide	0.15
53.818	Viridiflorol	0.15
		100.00

Chromatogram Sage \\Mac\Home\Downloads\Sage B160107D.qgd



Comments:

Typical Ranges of Main Components: