

Sample Information

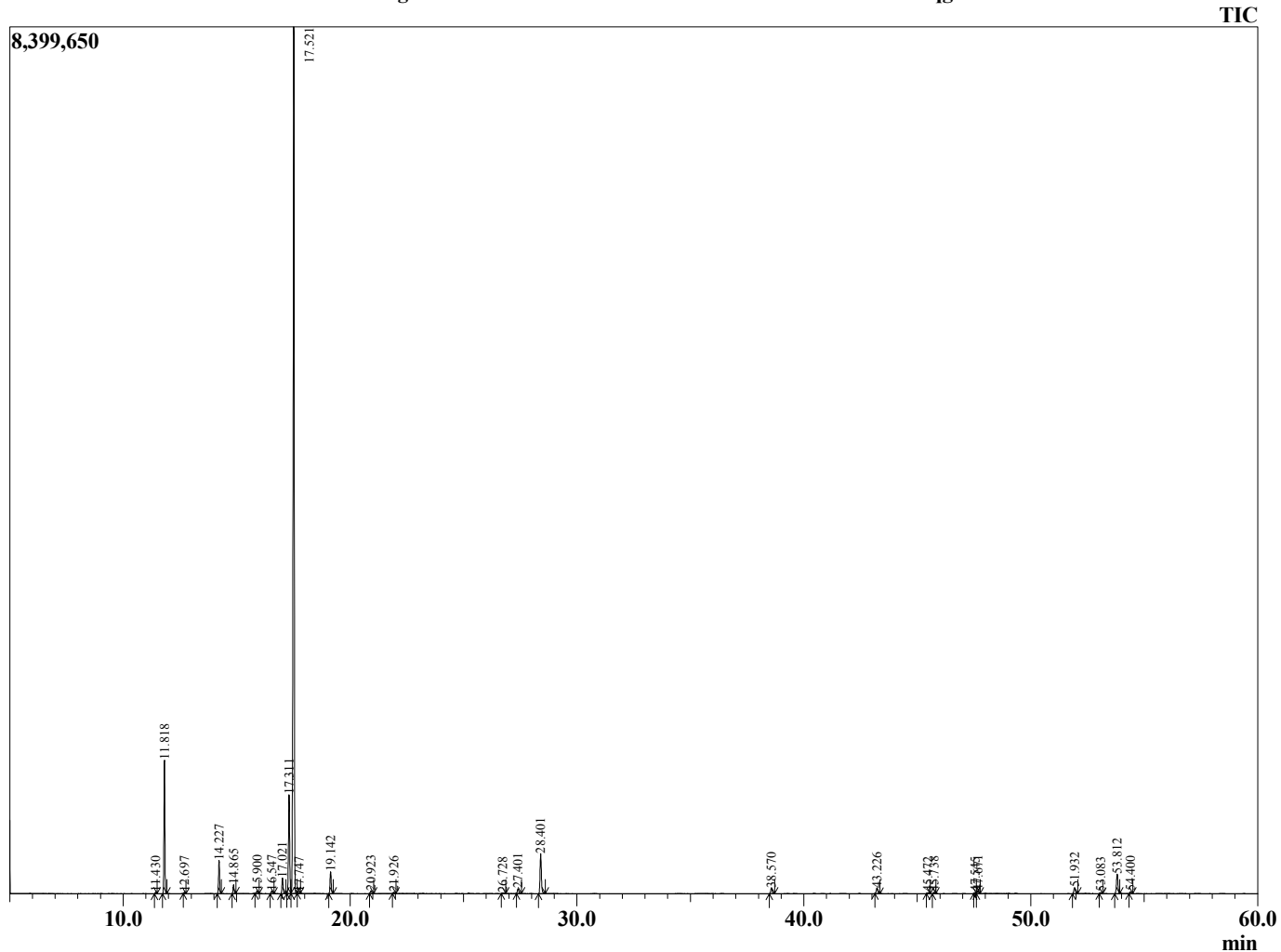
Analyzed by : Tanner Wortham
 Analyzed : 1/9/16 5:33:23 PM
 Sample Type : Essential Oil
 Sample Name : Niaouli
 Sample ID : B160107C
 Injection Volume : 0.10
 Data File : \\Mac\Home\Downloads\Niaouli B160107C.qgd



Peak Report TIC

R.Time	Name	Area%
11.430	Thujene <alpha->	0.09
11.818	Pinene <alpha->	8.28
12.697	Camphene	0.09
14.227	Pinene <beta->	2.31
14.865	Myrcene	0.62
15.900	Phellandrene <alpha->	0.21
16.547	Terpinene <alpha->	0.21
17.021	Cymene <para->	1.22
17.311	Limonene	8.01
17.521	1,8-cineole	68.31
17.747	Ocimene <Z-beta->	0.06
19.142	Terpinene <gamma->	1.71
20.923	Terpinolene	0.25
21.926	Linalool	0.11
26.728	Terpineol <delta->	0.09
27.401	Terpinen-4-ol	0.47
28.401	Terpineol <alpha->	3.53
38.570	Terpinyl acetate <alpha->	0.53
43.226	Caryophyllene <trans->	0.55
45.472	Humulene <alpha->	0.09
45.738	Alloaromadendrene	0.12
47.545	Selinene <beta->	0.08
47.671	Viridiflorene (Ledene)	0.25
51.932	Nerolidol <trans->	0.59
53.083	Caryophyllene oxide	0.10
53.812	Viridiflorol	1.94
54.400	Ledol	0.17
		100.00

Chromatogram Niaouli \\Mac\Home\Downloads\Niaouli B160107C.qgd



Comments:

Typical Ranges of Main Components: