

Sample Information

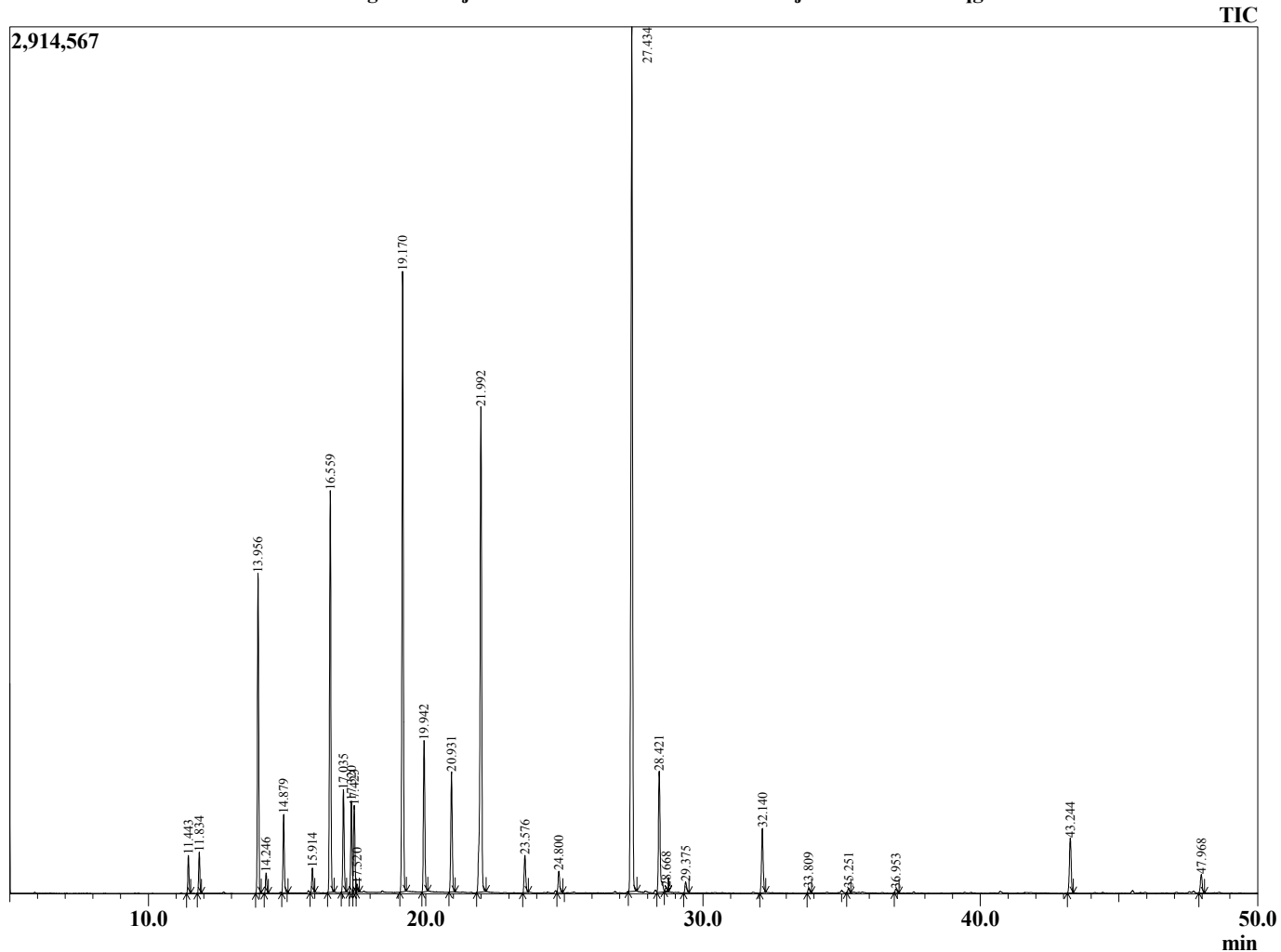
Analyzed by : Tanner Wortham  
 Analyzed : 1/10/16 1:16:13 AM  
 Sample Type : Essential Oil  
 Sample Name : Marjoram  
 Sample ID : B160107G  
 Injection Volume : 0.10  
 Data File : \\Mac\Home\Downloads\Marjoram B160107G.qgd



Peak Report TIC

R.Time	Name	Area%
11.443	Thujene <alpha->	0.77
11.834	Pinene <alpha->	0.86
13.956	Sabinene	7.06
14.246	Pinene <beta->	0.46
14.879	Myrcene	1.87
15.914	Phellandrene <alpha->	0.58
16.559	Terpinene <alpha->	9.53
17.035	Cymene <para->	2.48
17.320	Limonene	2.19
17.423	Phellandrene <beta->	2.20
17.520	1,8-cineole	0.20
19.170	Terpinene <gamma->	15.03
19.942	4-Thujanol <trans->	3.87
20.931	Terpinolene	3.21
21.992	Sabinene hydrate <trans->	14.02
23.576	Menth-2-en-1-ol <cis-p>	1.05
24.800	Menth-2-en-1-ol <trans-p>	0.63
27.434	Terpinen-4-ol	25.22
28.421	Terpineol <alpha->	3.75
28.668	Methyl chavicol	0.12
29.375	Piperitol <trans->	0.33
32.140	Linalyl acetate	1.86
33.809	1,4-dihydroxy-p-menth-2-ene	0.14
35.251	Sabinene hydrate acetate <trans->	0.14
36.953	Unidentified	0.12
43.244	Caryophyllene <trans->	1.73
47.968	Bicyclogermacrene	0.59
		100.00

Chromatogram Marjoram \\Mac\Home\Downloads\Marjoram B160107G.qgd



Comments:

Typical Ranges of Main Components: