

Sample Information

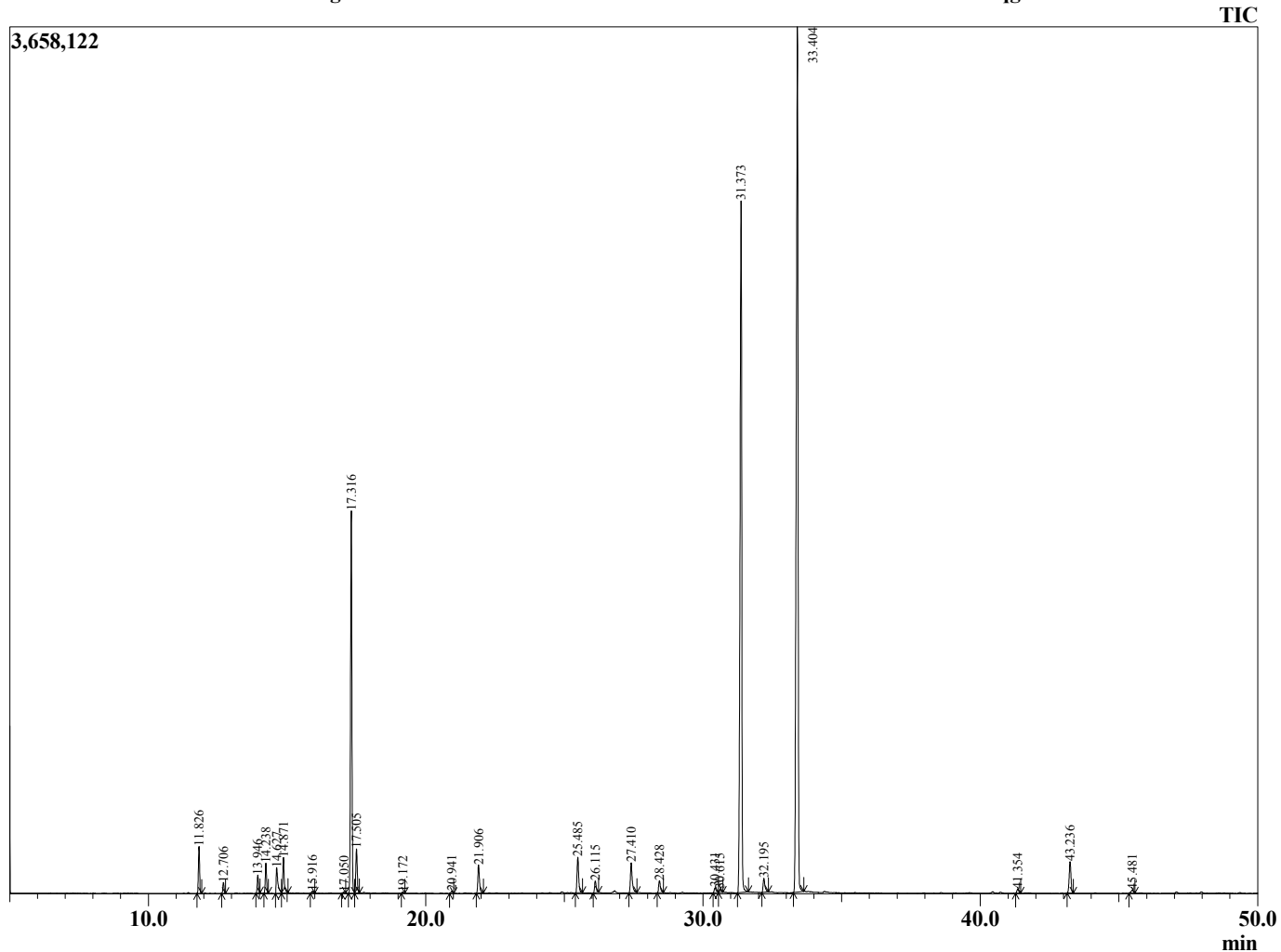
Analyzed by : Tanner Wortham  
 Analyzed : 1/10/16 3:11:56 AM  
 Sample Type : Essential Oil  
 Sample Name : Litsea Cubeba  
 Sample ID : B160107H  
 Injection Volume : 0.10  
 Data File : \\Mac\Home\Downloads\Litsea Cubeba B160107H.qgd



Peak Report TIC

R.Time	Name	Area%
11.826	Pinene <alpha>	1.40
12.706	Camphene	0.34
13.946	Sabinene	0.59
14.238	Pinene <beta>	0.98
14.627	Hept-5-en-2-one <6-methyl->	1.12
14.871	Myrcene	1.31
15.916	Phellandrene <alpha->	0.08
17.050	Cymene <para->	0.04
17.316	Limonene	13.43
17.505	1,8-cineole	1.56
19.172	Terpinene <gamma>	0.04
20.941	Terpinolene	0.09
21.906	Linalool	1.19
25.485	Citronellal	1.48
26.115	Chrysanthenol <cis>	0.49
27.410	Isocitral <trans>	1.40
28.428	Terpineol <alpha>	0.55
30.431	Nerol	0.26
30.615	Citronellol	0.15
31.373	Neral	30.69
32.195	Geraniol	0.65
33.404	Geranial	40.35
41.354	Elemene <beta>	0.19
43.236	Caryophyllene <trans>	1.45
45.481	Humulene <alpha>	0.17
		100.00

Chromatogram Litsea Cubeba \\Mac\Home\Downloads\Litsea Cubeba B160107H.qgd



Comments:

Typical Ranges of Main Components: