

Sample Information

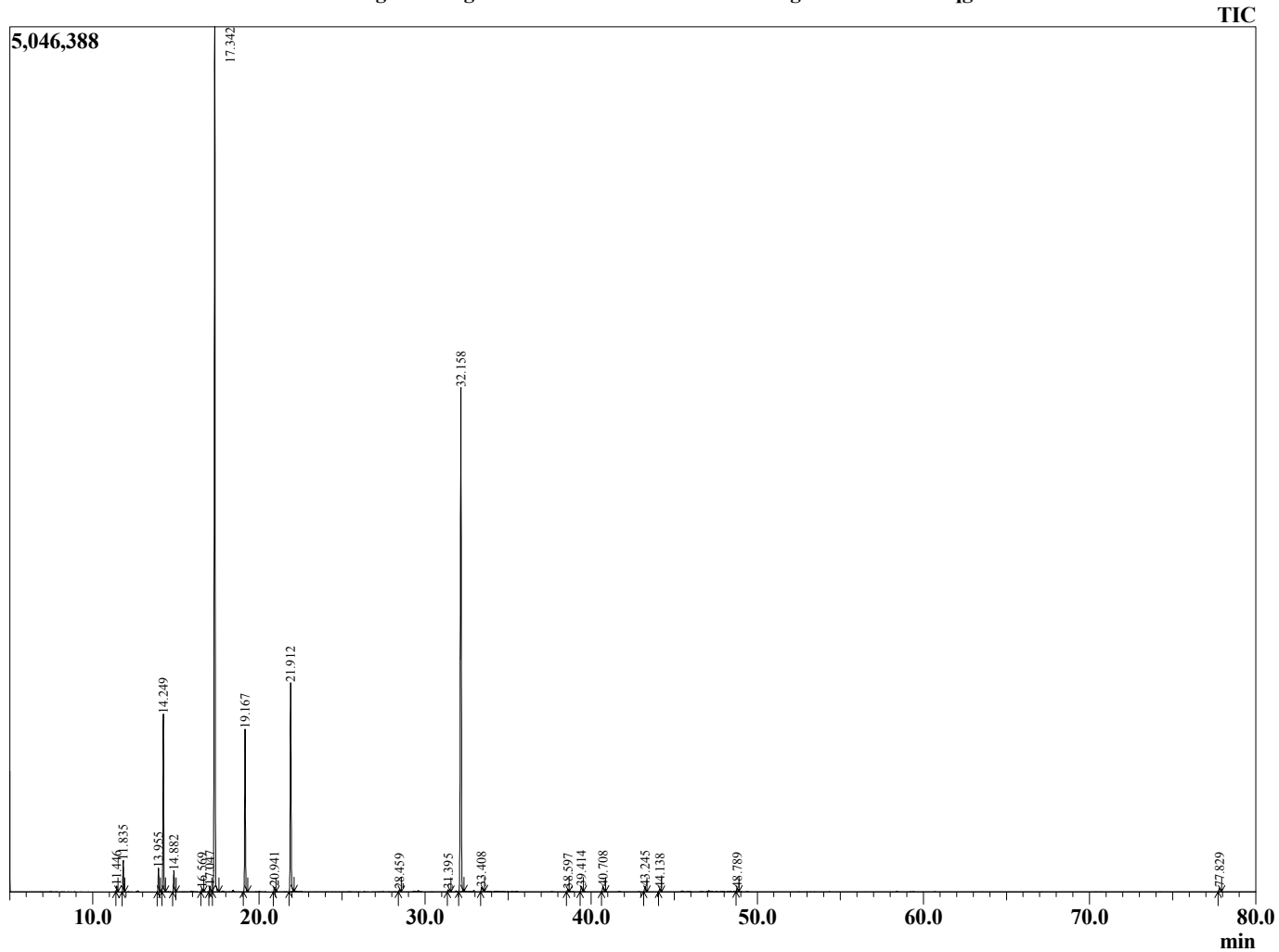
Analyzed by : Tanner Wortham  
 Analyzed : 1/9/16 11:20:23 PM  
 Sample Type : Essential Oil  
 Sample Name : Bergamot  
 Sample ID : B160107F  
 Injection Volume : 0.10  
 Data File : \\Mac\Home\Downloads\Bergamot B160107F.qgd



Peak Report TIC

R.Time	Name	Area%
11.446	Thujene <alpha>	0.21
11.835	Pinene <alpha>	1.19
13.955	Sabinene	0.98
14.249	Pinene <beta>	7.35
14.882	Myrcene	0.95
16.569	Terpinene <alpha>	0.16
17.047	Cymene <para>	0.27
17.342	Limonene	41.29
19.167	Terpinene <gamma>	7.21
20.941	Terpinolene	0.26
21.912	Linalool	10.28
28.459	Terpineol <alpha>	0.12
31.395	Neral	0.14
32.158	Linalyl acetate	27.56
33.408	Geranial	0.29
38.597	Terpinyl acetate <alpha>	0.16
39.414	Neryl acetate	0.31
40.708	Geranyl acetate	0.32
43.245	Caryophyllene <trans>	0.33
44.138	Bergamotene <trans-alpha>	0.16
48.789	Bisabolene <beta>	0.20
77.829	Ricinelaicid Acid Lactone	0.26
		100.00

Chromatogram Bergamot \\Mac\Home\Downloads\Bergamot B160107F.qgd



Comments:

Typical Ranges of Main Components: