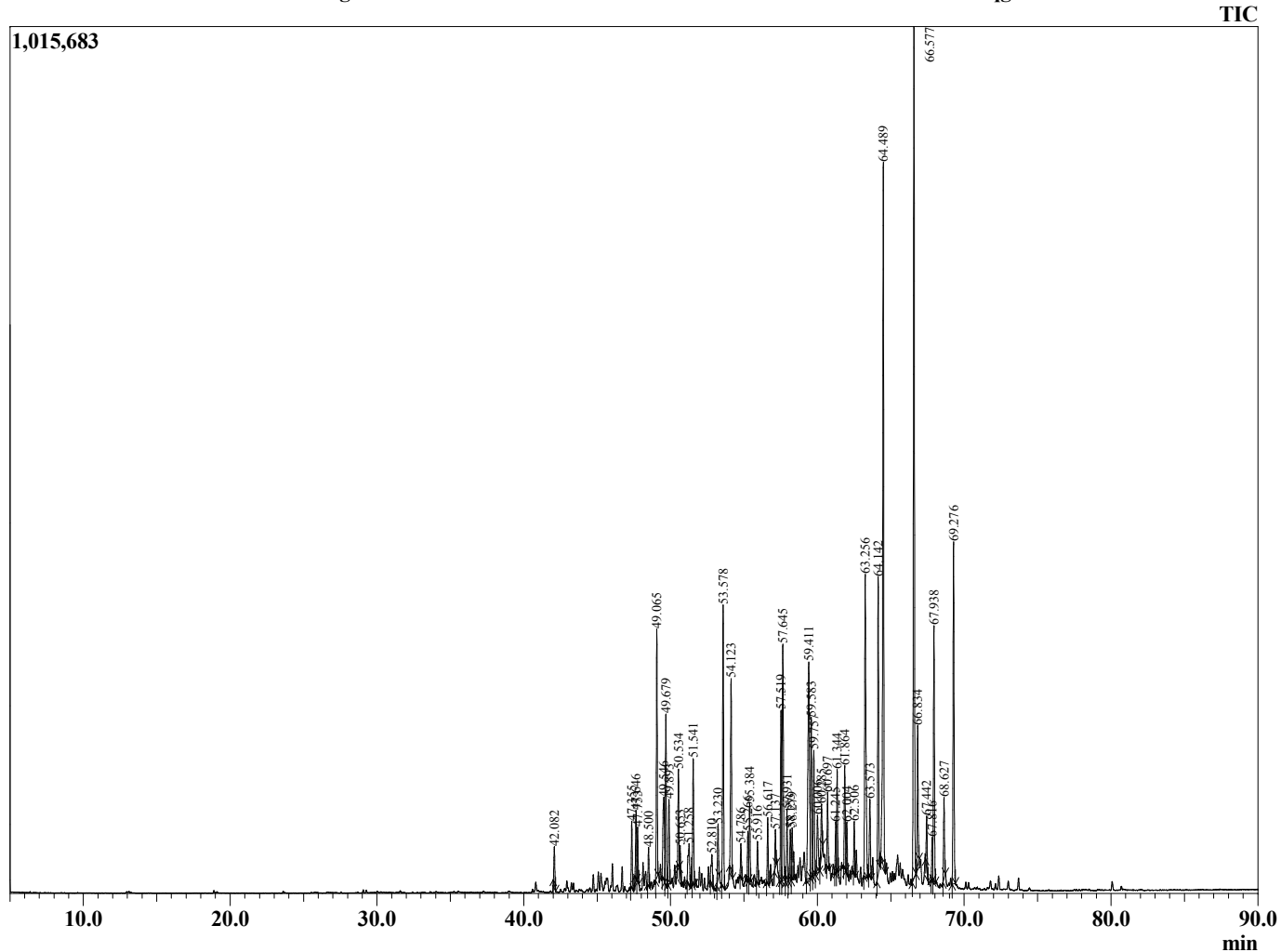


Sample Information

Analyzed by : Dr. Robert S. Pappas
 Analyzed : 10/9/2015 6:39:10 AM
 Sample Type : Essential Oil
 Sample Name : Vetiver
 Sample ID : B151008H
 Injection Volume : 0.10
 Data File : C:\GCMSsolution\Data\EOU\Vetiver\Vetiver B151008H.qgd



Chromatogram Vetiver C:\GCMSsolution\Data\EOU\Vetiver\Vetiver B151008H.qgd



R.Time	Name	Area%
42.082	Ylangene <alpha>	0.51
47.355	Prezizaene	0.85
47.646	Khusimene	0.86
47.753	Gurjunene isomer	0.67
48.500	Isolongifolenene <dehydro>	0.46
49.065	Amorphene <alpha>	3.22
49.546	Selinene <delta>	1.74
49.679	Vetispirene <beta>	2.24
49.893	Amorphene <gamma>	1.10
50.534	Epizonarene	1.18
50.653	Cuprenene <alpha>	0.30
51.258	Uvetiver	0.88
51.541	Guaine <beta>	1.72
52.810	Calacorene <alpha>	0.57
53.230	Elemol <alpha>	0.78
53.578	Vetivenene <beta>	3.99
54.123	Eudesmenol	2.85
54.786	Uvetiver	0.43
55.266	Uvetiver	0.63
55.384	Uvetiver	1.05
55.916	Khusimone	0.57
56.617	Uvetiver	0.82
57.137	Uvetiver	0.46
57.519	Uvetiver	2.34
57.645	Selina-6-en-4-ol <isomer>	4.13
57.931	Uvetiver	1.11
58.153	Rosifoliol isomer	0.79
58.279	Cadin-4-en-7-ol <cis>	0.77
59.411	Cadinol <alpha>	5.02
59.583	Eudesmol epi isomer	2.50
59.757	Eudesmol epi isomer	1.83
60.006	Spiro isomer of vetiver	1.05
60.285	Zizanone <epi>	0.82
60.697	Uvetiver	0.95
61.245	Zizanal	0.73
61.344	Nootkatol <isomer>	1.31
61.864	Juniper camphor	1.44
62.004	Amorphadienol isomer	0.67
62.506	Vetiver	0.63
63.256	Vetiselinenol	5.45
63.573	Uvetiver	1.13
64.142	Zizanol	4.03
64.489	Khusimol	10.52
66.577	Isovalencenol <trans>	12.34
66.834	Uvetiver	1.87
67.442	Nootkatone	0.65
67.816	Nootkatone isomer	0.52
67.938	Vetivone <beta>	3.61
68.627	Uvetiver	1.06
69.276	Vetivone <alpha>	4.85
		100.00

Comments:

Typical Ranges of Main Components: