

Sample Information

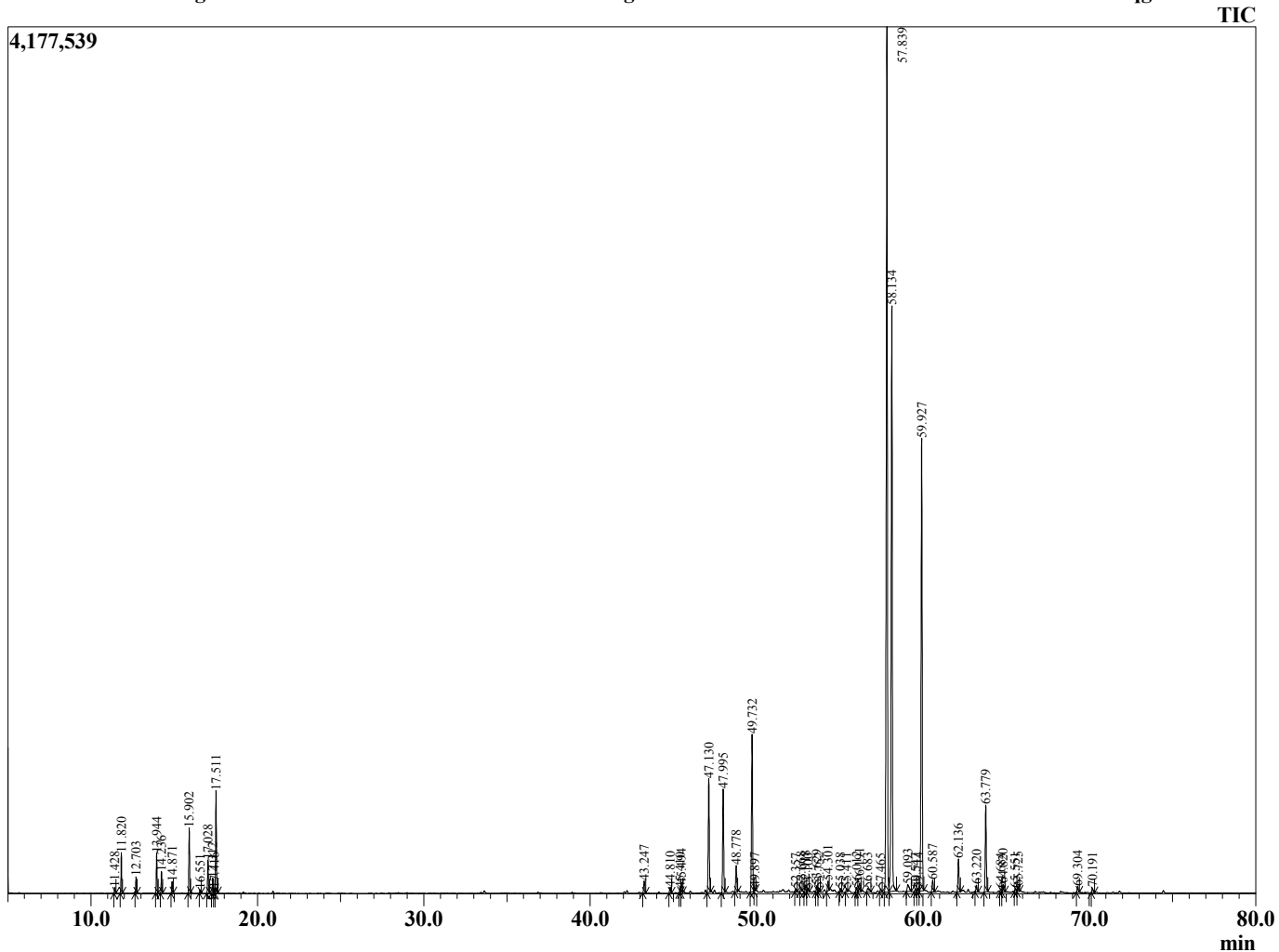
Analyzed by : Tanner Wortham
 Analyzed : 10/25/15 4:52:15 AM
 Sample Type : Essential Oil
 Sample Name : Tumeric
 Sample ID : B151019Y
 Injection Volume : 0.10
 Data File : C:\Users\Tanner Wortham\Google Drive\Academic GC Raw Data\Tumeric B15101



Peak Report TIC

R.Time	Name	Area%
11.428	Thujene <alpha->	0.13
11.820	Pinene <alpha->	0.86
12.703	Camphene	0.37
13.944	Sabinene	0.93
14.236	Pinene <beta->	0.51
14.871	Myrcene	0.28
15.902	Phellandrene <alpha->	1.59
16.551	Terpinene <alpha->	0.09
17.028	Cymene <para->	0.85
17.312	Limonene	0.39
17.416	Phellandrene <beta->	0.12
17.511	1,8-cineole	2.66
43.247	Caryophyllene <trans->	0.41
44.810	Unidentified	0.19
45.410	Farnesene<(E)-beta->	0.14
45.494	Humulene <alpha->	0.28
47.130	Ar-Curcumene	3.67
47.995	Zingiberene<alpha->	3.33
48.778	Bisabolene <beta->	0.90
49.732	Sesquiphellandrene <beta->	5.19
49.897	Bisabolene <E-gamma->	0.09
52.357	Unidentified	0.10
52.668	Unidentified	0.12
52.918	Unidentified	0.20
53.100	Caryophyllene oxide	0.09
53.629	Unidentified	0.23
53.752	Unidentified	0.13
54.301	Unidentified	0.34
55.038	Zingiberenol	0.11
55.411	Helifolen-12-al C<anti-syn-syn>	0.10
56.012	Unidentified	0.18
56.191	Unidentified	0.32
56.683	Unidentified	0.22
57.465	Tumerone <alpha->	0.12
57.839	Tumerone<beta->	31.33
58.134	Ar-Turmerone	21.31
59.093	Himachal-4-en-1-beta-ol <11-alpha-H>	0.42
59.547	Unidentified	0.10
59.714	Unidentified	0.12
59.927	Curhone	15.87
60.587	Curcuphenol	0.42
62.136	Unidentified	1.12
63.220	Unidentified	0.23
63.779	Altanone isomer	2.84
64.684	Unidentified	0.10
64.820	Unidentified	0.27
65.551	Unidentified	0.11
65.725	Unidentified	0.15
69.304	Unidentified	0.22
70.191	Unidentified	0.17
		100.00

Chromatogram Tumeric C:\Users\Tanner Wortham\Google Drive\Academic GC Raw Data\Tumeric B151019Y.qgd



Comments:

Typical Ranges of Main Components: