

Sample Information

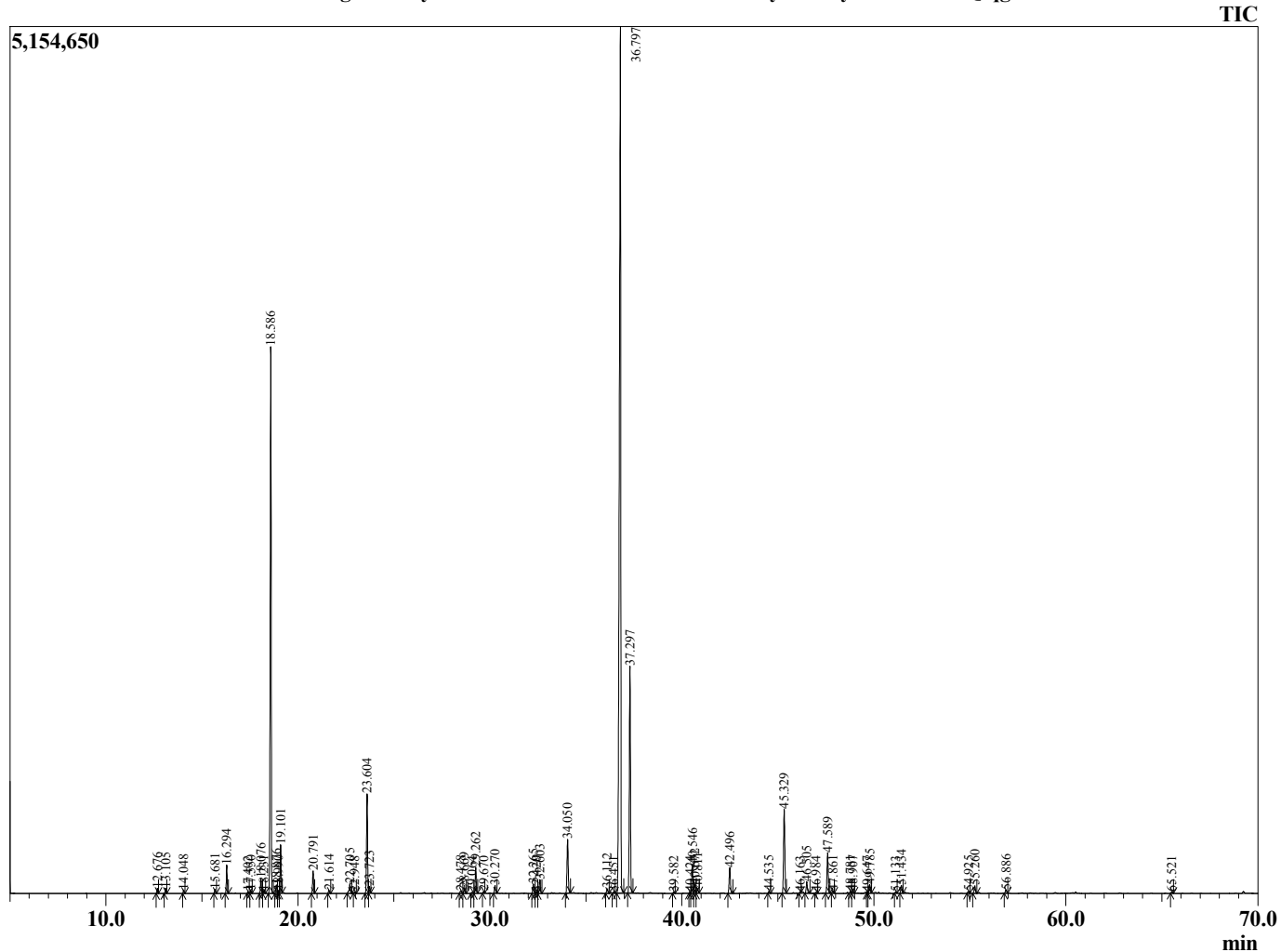
Analyzed by : Dr. Robert S. Pappas
 Analyzed : 10/9/2015 11:11:17 AM
 Sample Type : Essential Oil
 Sample Name : Thyme
 Sample ID : B151008Q
 Injection Volume : 0.10
 Data File : C:\GCMSsolution\Data\EOU\Thyme\Thyme B151008Q.qgd



Peak Report TIC

R.Time	Name	Area%
12.676	Thujene<alpha->	0.15
13.105	Pinene<alpha->	0.16
14.048	Camphene	0.11
15.681	Octen-3-ol+Pinene<beta>	0.15
16.294	Myrcene	0.92
17.402	Phellandrene<alpha->	0.05
17.550	Carene<delta-3->	0.09
18.076	Terpinene <alpha->	0.51
18.231	Cymene <o>	0.10
18.586	Cymene <para->	19.62
18.876	Limonene	0.29
18.990	Phellandrene <beta>	0.08
19.101	1,8-cineole	1.66
20.791	Terpinene<gamma->	0.81
21.614	4-Thujanol <cis>	0.12
22.705	Linalool-hydrate<Z>	0.44
22.948	Cymenene <para->	0.06
23.604	Linalool	3.71
23.723	Sabinene hydrate<trans->	0.26
28.478	Umbellulone	0.13
28.669	Borneol	0.20
29.064	Menthol	0.05
29.262	Terpinen-4-ol	1.05
29.670	Cymen-8-ol<para->	0.05
30.270	Terpineol <alpha>	0.31
32.265	Nerol	0.38
32.420	Citronellol	0.05
32.603	Thymol, methyl ether	0.55
34.050	Geraniol	2.27
36.112	Thymol iso	0.20
36.451	Bornyl acetate	0.05
36.797	Thymol	45.23
37.297	Carvacrol	9.24
39.582	Dihydrocarveol-acetate<iso>	0.05
40.424	Thymol acetate	0.04
40.546	Terpinyl acetate<alpha->	1.26
40.672	Terpinyl acetate <isomer>	0.35
40.811	Eugenol	0.19
42.496	Copaene <alpha>	1.13
44.535	Gurjunene <alpha->	0.08
45.329	Caryophyllene <trans>	3.70
46.163	Bergamotene <trans-alpha>	0.04
46.505	Aromadendrene	0.52
46.984	Myrtal-4(12)-ene	0.05
47.589	Humulene <alpha>	1.77
47.861	(-)-Alloaromadendrene	0.09
48.781	Cadina-1(6),4-diene <trans>	0.09
48.907	Tert-butyl-4-hydroxyanisole	0.09
49.647	Selinene <beta>	0.04
49.785	Viridiflorene (Ledene)	0.37
51.133	Amorphene <delta>	0.05
51.434	Cadinene <delta>	0.34
54.925	Spathulenol	0.09
55.260	Caryophyllene oxide	0.37
56.886	Humulene epoxide II	0.15
65.521	Unidentified	0.06
		100.00

Chromatogram Thyme C:\GCMSsolution\Data\EOU\Thyme\Thyme B151008Q.qgd



Comments:

Typical Ranges of Main Components: