

Sample Information

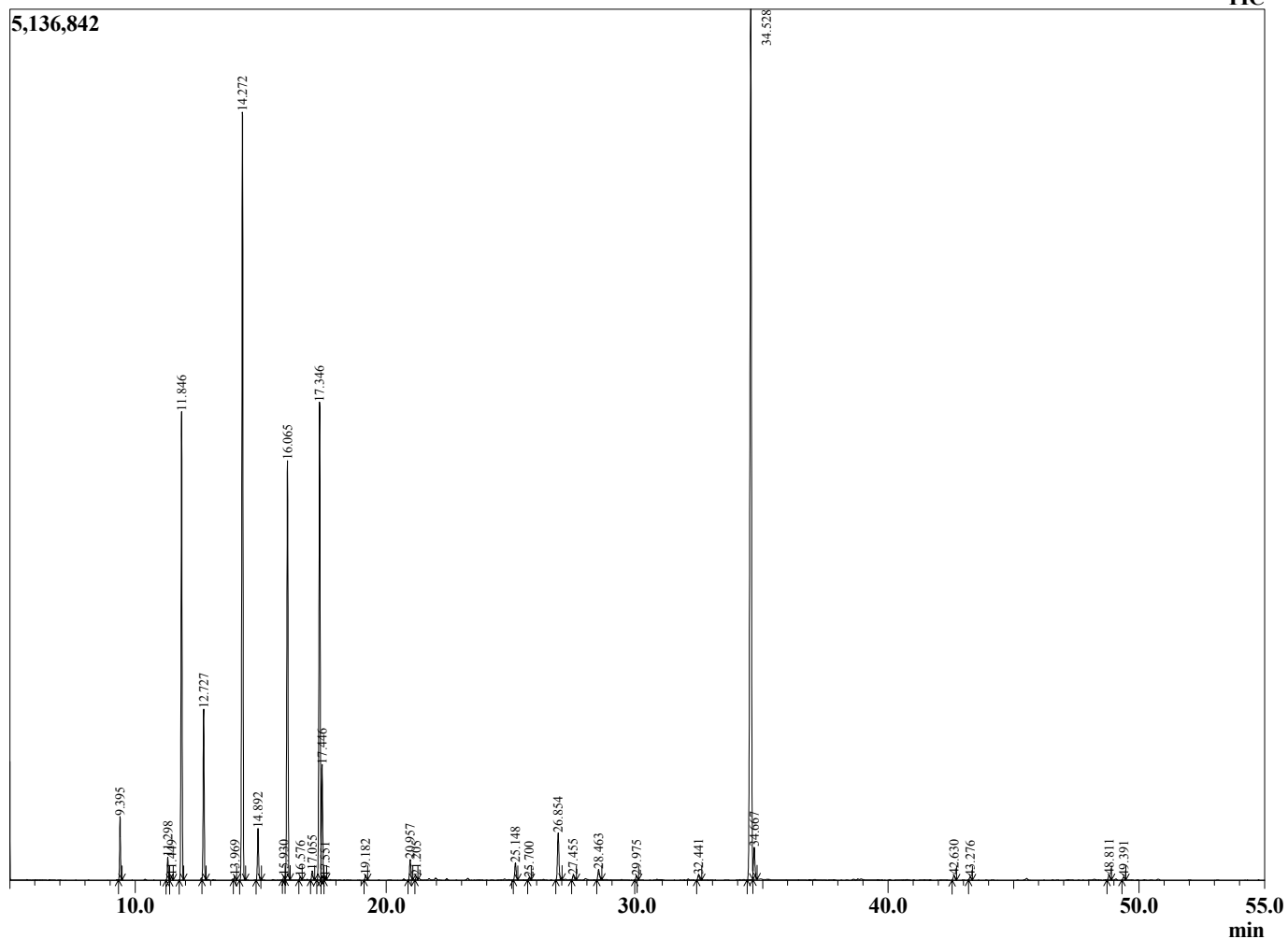
Analyzed by : Tanner Wortham
 Analyzed : 10/24/15 4:17:11 PM
 Sample Type : Essential Oil
 Sample Name : Spruce Black
 Sample ID : B151019AC
 Injection Volume : 0.10
 Data File : C:\Users\Tanner Wortham\Google Drive\Academic GC Raw Data\Spruce Black B



Peak Report TIC

R.Time	Name	Area%
9.395	Santene	1.26
11.298	Tricyclene	0.52
11.449	Thujene <alpha->	0.10
11.846	Pinene <alpha->	10.65
12.727	Camphene	3.99
13.969	Sabinene	0.10
14.272	Pinene <beta->	19.56
14.892	Myrcene	1.30
15.930	Phellandrene <alpha->	0.09
16.065	3-Carene	10.99
16.576	Terpinene <alpha->	0.08
17.055	Cymene <para->	0.25
17.346	Limonene	13.14
17.446	Phellandrene <beta->	2.93
17.551	1,8-cineole	0.07
19.182	Terpinene <gamma->	0.14
20.957	Terpinolene	0.58
21.205	Fenchone	0.10
25.148	Camphor	0.52
25.700	Terpineol <trans-beta->	0.07
26.854	Borneol	1.52
27.455	Terpinen-4-ol	0.16
28.463	Terpineol <alpha->	0.36
29.975	Fenchyl acetate <endo->	0.14
32.441	Piperitone	0.17
34.528	Bornyl acetate	29.66
34.667	Isobornyl acetate	0.99
42.630	Junipene	0.17
43.276	Caryophyllene <trans>	0.11
48.811	Bisabolene <beta->	0.17
49.391	Cadinene <delta->	0.10
		100.00

Chromatogram Spruce Black C:\Users\Tanner Wortham\Google Drive\Academic GC Raw Data\Spruce Black B151019AC.qgd



Comments:

Typical Ranges of Main Components: