

Sample Information

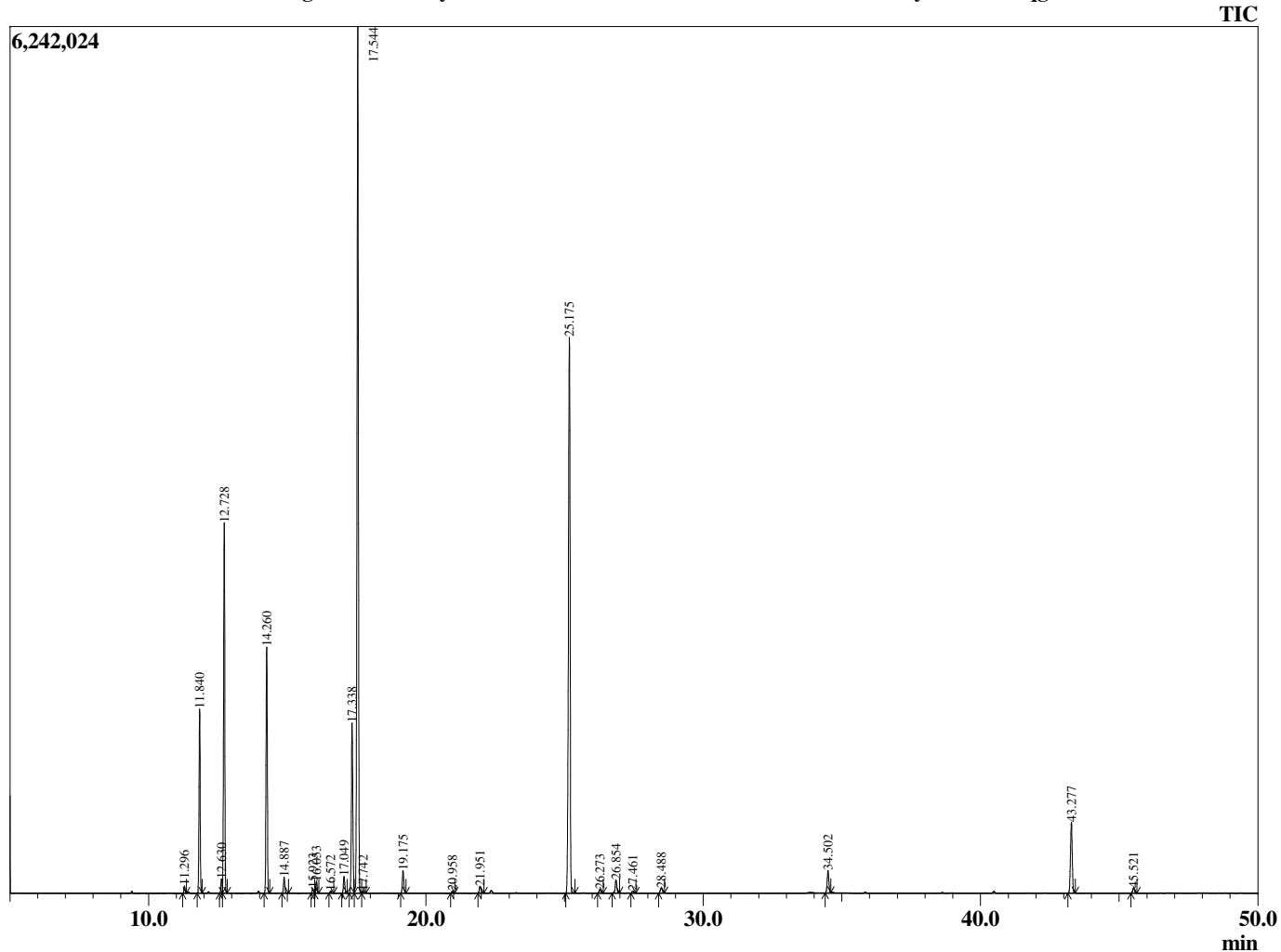
Analyzed by : Tanner Wortham
 Analyzed : 10/9/2015 8:06:27 AM
 Sample Type : Essential Oil
 Sample Name : Rosemary
 Sample ID : B151008I
 Injection Volume : 0.10
 Data File : C:\GCMSsolution\Data\EOU\Academic\Rosemary B151008I.qgd



Peak Report TIC

R.Time	Name	Area%
11.296	Tricyclene	0.22
11.840	Pinene <alpha>	5.70
12.630	Fenchene <alpha>	0.46
12.728	Camphene	12.02
14.260	Pinene <beta>	8.38
14.887	Myrcene	0.58
15.923	Phellandrene <alpha->	0.16
16.053	3-Carene	0.43
16.572	Terpinene <alpha->	0.09
17.049	Cymene <para->	0.61
17.338	Limonene	6.55
17.544	1,8-cineole	33.18
17.742	Ocimene <Z-beta>	0.08
19.175	Terpinene <gamma>	0.88
20.958	Terpinolene	0.09
21.951	Linalool	0.31
25.175	Camphor	24.51
26.273	Isoborneol	0.17
26.854	Borneol	0.59
27.461	Terpinen-4-ol	0.10
28.488	Terpineol <alpha>	0.28
34.502	Bornyl acetate	1.00
43.277	Caryophyllene <trans>	3.38
45.521	Humulene <alpha>	0.24
		100.00

Chromatogram Rosemary C:\GCMSsolution\Data\EOU\Academic\Rosemary B151008I.qgd



Comments:

Typical Ranges of Main Components: