

Sample Information

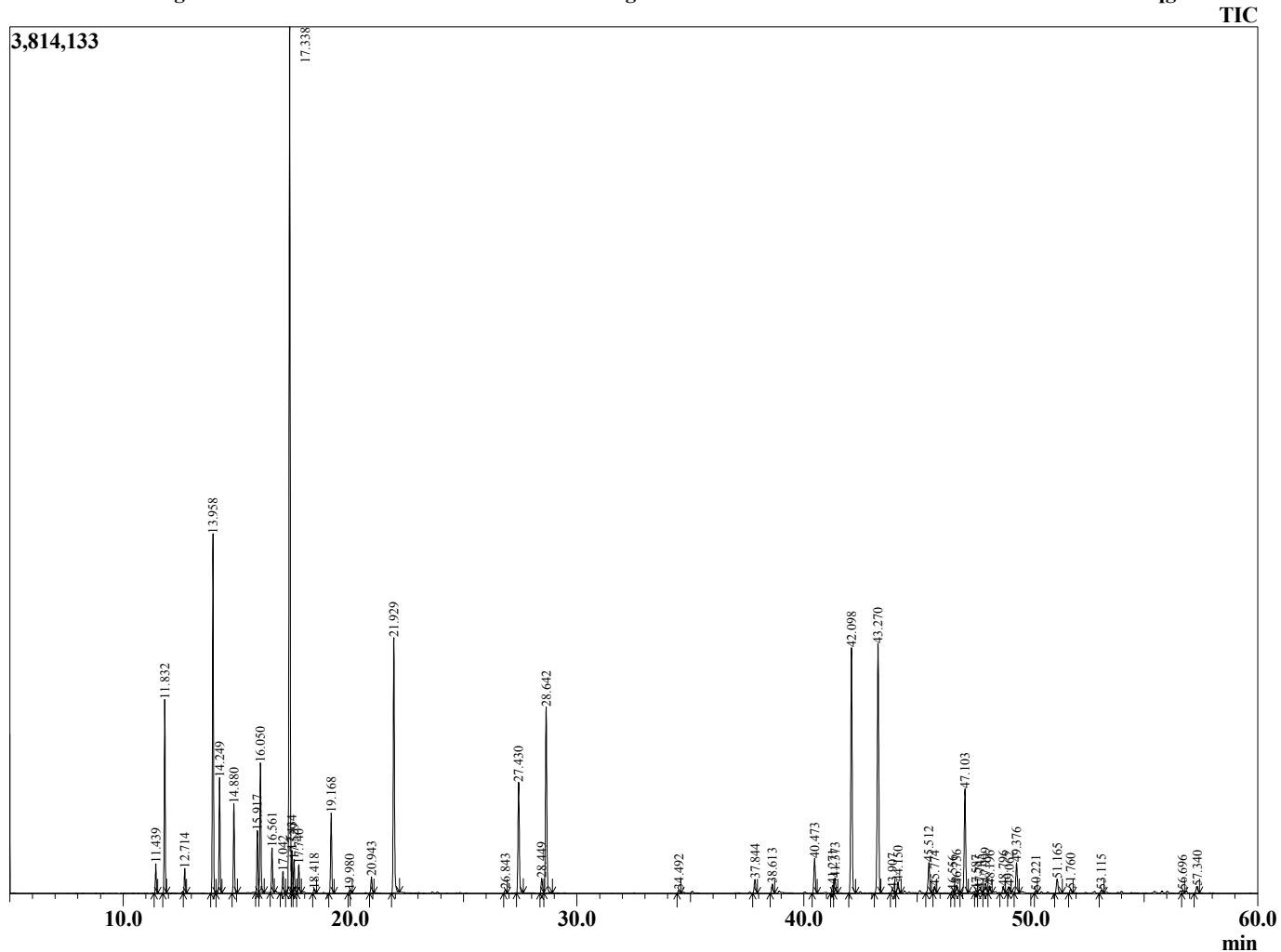
Analyzed by : Tanner Wortham
 Analyzed : 10/24/15 10:06:24 PM
 Sample Type : Essential Oil
 Sample Name : Ravensara
 Sample ID : B151019Z
 Injection Volume : 0.10
 Data File : C:\Users\Tanner Wortham\Google Drive\Academic GC Raw Data\Ravensara B151019Z



Peak Report TIC

R.Time	Name	Area%
11.439	Thujene <alpha->	0.64
11.832	Pinene <alpha->	4.27
12.714	Camphene	0.56
13.958	Sabinene	8.51
14.249	Pinene <beta->	2.74
14.880	Myrcene	2.17
15.917	Phellandrene <alpha->	1.56
16.050	3-Carene	3.40
16.561	Terpinene <alpha->	1.13
17.042	Cymene <para->	0.61
17.338	Limonene	23.07
17.434	Phellandrene <beta->	0.98
17.529	1,8-cineole	0.89
17.740	Ocimene <Z-beta>	0.76
18.418	Ocimene <E-beta>	0.11
19.168	Terpinene <gamma>	2.17
19.980	4-Thujanol <trans>	0.09
20.943	Terpinolene	0.46
21.929	Linalool	7.40
26.843	Borneol	0.12
27.430	Terpinen-4-ol	3.46
28.449	Terpineol <alpha>	0.48
28.642	Methyl chavicol	5.78
34.492	Bornyl acetate	0.10
37.844	Elemene <delta->	0.45
38.613	Cubebene <alpha>	0.31
40.473	Copaene <alpha>	1.16
41.271	Cubebene <beta>	0.26
41.373	Elemene <beta>	0.50
42.098	Methyleugenol	7.83
43.270	Caryophyllene <trans>	8.51
43.907	Elemene <gamma>	0.14
44.150	Bergamotene <trans-alpha>	0.38
45.512	Humulene <alpha>	1.06
45.774	Alloaromadendrene	0.22
46.556	Murrola-4(14),5-diene <cis>	0.09
46.736	Cadina-1(6),4-diene <trans>	0.29
47.103	Germacrene D	3.62
47.587	Selinene <beta->	0.09
47.745	Muurolo-4(14),5-diene <trans>	0.21
47.999	Bicyclogermacrene	0.48
48.196	Muuroloene <alpha>	0.24
48.796	Bisabolene <beta->	0.21
49.062	Cadinene <gamma>	0.18
49.376	Cadinene <delta->	1.02
50.221	Cadine-1,4-diene <trans>	0.07
51.165	Elemol	0.56
51.760	Germacrene B	0.14
53.115	Caryophyllene oxide	0.11
56.696	Unidentified	0.10
57.340	Cadinol <alpha>	0.28
		100.00

Chromatogram Ravensara C:\Users\Tanner Wortham\Google Drive\Academic GC Raw Data\Ravensara B151019Z.qgd



Comments:

Typical Ranges of Main Components: