

Sample Information

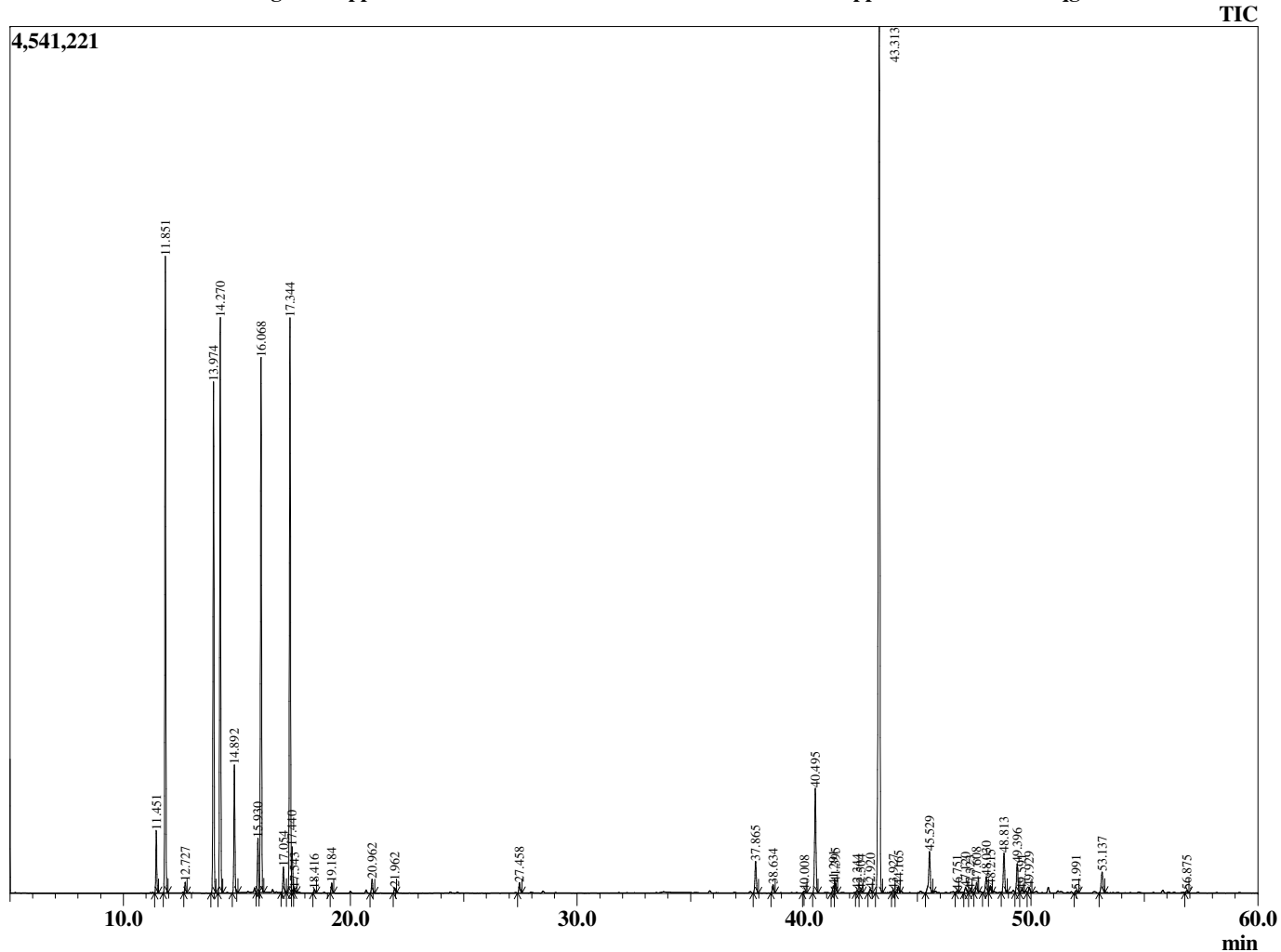
Analyzed by : Tanner Wortham
 Analyzed : 10/9/2015 4:14:19 AM
 Sample Type : Essential Oil
 Sample Name : Pepper Black
 Sample ID : B151008F
 Injection Volume : 0.10
 Data File : C:\GCMSsolution\Data\EOU\Academic\Pepper Black B151008F.qgd



Peak Report TIC

R.Time	Name	Area%
11.451	Thujene <alpha>	1.10
11.851	Pinene <alpha>	11.66
12.727	Camphene	0.21
13.974	Sabinene	10.14
14.270	Pinene <beta>	11.43
14.892	Myrcene	2.59
15.930	Phellandrene <alpha>	1.14
16.068	3-Carene	11.23
17.054	Cymene <para>	0.57
17.344	Limonene	11.92
17.440	Phellandrene <beta>	0.90
17.543	1,8-cineole	0.09
18.416	Ocimene <E-beta>	0.08
19.184	Terpinene <gamma>	0.22
20.962	Terpinolene	0.34
21.962	Linalool	0.13
27.458	Terpinen-4-ol	0.26
37.865	Elemene <delta>	0.86
38.634	Cubebene <alpha>	0.23
40.008	Isoledene	0.07
40.495	Copaene <alpha>	2.85
41.291	Cubebene <beta>	0.20
41.395	Elemene <beta>	0.26
42.344	Caryophyllene <cis>	0.06
42.504	Gurjunene <alpha>	0.08
42.920	Bergamotene <cis-alpha>	0.11
43.313	Caryophyllene <trans>	25.39
43.927	Copaene <beta>	0.08
44.165	Bergamotene <trans-alpha>	0.19
45.529	Humulene <alpha>	1.32
46.751	Cadina-1(6),4-diene <trans>	0.06
47.120	Germacrene D	0.18
47.323	Sesquiphellandrene <beta>	0.07
47.608	Selinene <beta>	0.30
48.030	Zingiberene <alpha>	0.51
48.215	Murolene <alpha>	0.20
48.813	Bisabolene <beta>	1.09
49.396	Cadinene <delta>	0.82
49.591	Calamenene <trans>	0.11
49.929	Bisabolene <E-gamma>	0.16
51.991	Nerolidol <trans>	0.08
53.137	Caryophyllene oxide	0.67
56.875	Cadinol <delta>	0.06
		100.00

Chromatogram Pepper Black C:\GCMSsolution\Data\EOU\Academic\Pepper Black B151008F.qgd



Comments:

Typical Ranges of Main Components: