

Sample Information

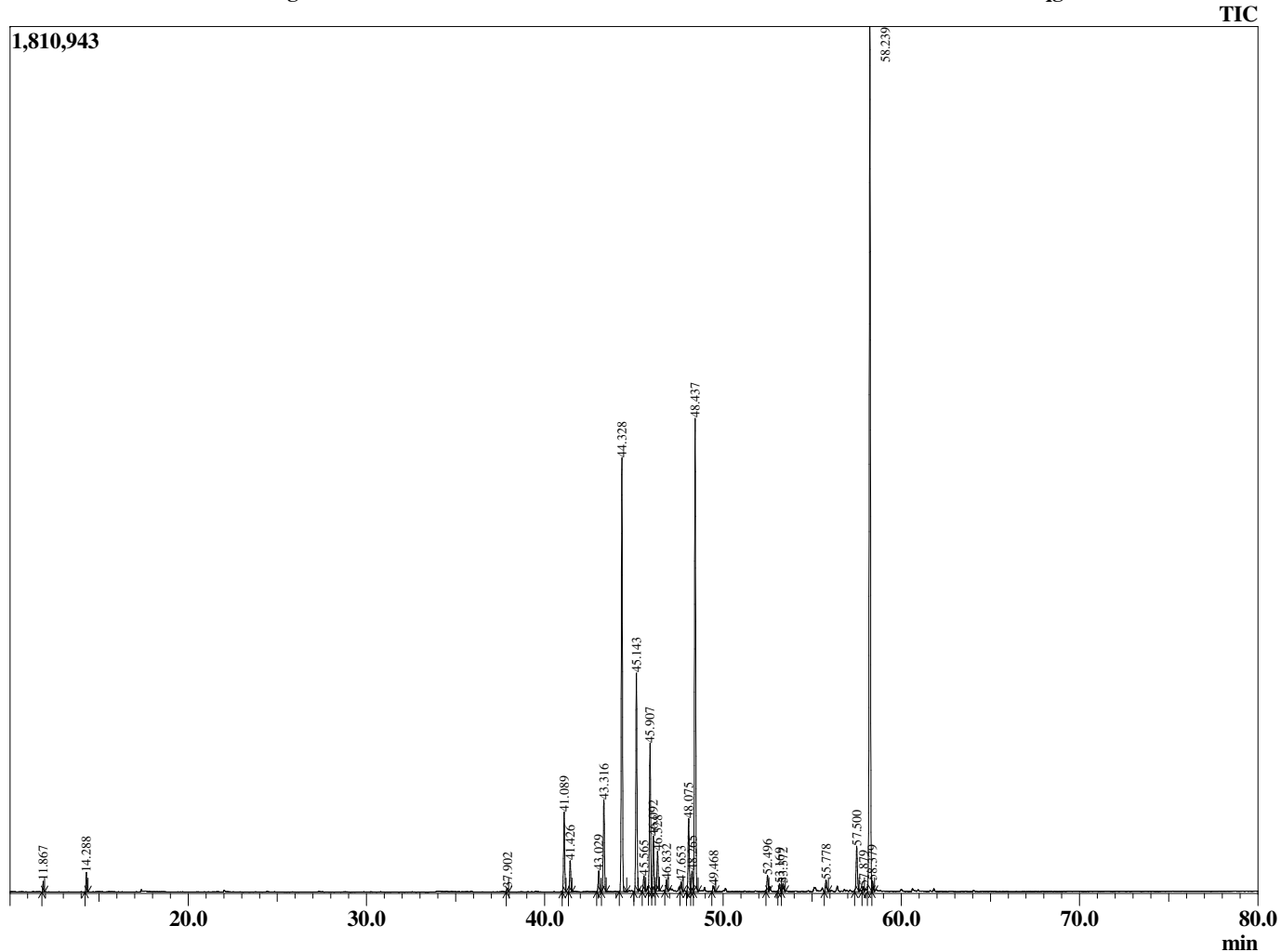
Analyzed by : Tanner Wortham
 Analyzed : 10/12/2015 10:48:55 PM
 Sample Type : Essential Oil
 Sample Name : Patchouli
 Sample ID : B151008O
 Injection Volume : 0.10
 Data File : C:\GCMSsolution\Data\EOU\Academic\Patchouli B151008O001.qgd



Peak Report TIC

R.Time	Name	Area%
11.867	Pinene <alpha>	0.25
14.288	Pinene <beta>	0.51
37.902	Elemene <delta>	0.13
41.089	Patchoulene <beta>	2.84
41.426	Elemene <beta>	1.12
43.029	Cycloseychellene	0.77
43.316	Caryophyllene <trans>	3.35
44.328	Guaiene <alpha>	15.19
45.143	Seychellene	7.99
45.565	Humulene <alpha>	0.60
45.907	Patchoulene <alpha>	5.51
46.092	Caryophyllene<9-epi> cis	2.05
46.328	Caryophyllene<9-epi> trans	1.52
46.832	Chamigrene <beta>	0.45
47.653	Selinene <beta>	0.38
48.075	Aciphyllene	2.76
48.265	Selinene <alpha>	0.86
48.437	Bulnesene <alpha>	17.09
49.468	Panasinsen <(-)-.alpha>	0.25
52.496	D Norpatchoulenol	0.63
53.169	Caryophyllene oxide	0.30
53.372	Spathulenol	0.34
55.778	Unidentified	0.52
57.500	Pogostol	1.90
57.879	Palustrol isomer	0.20
58.239	Patchouli alcohol	32.05
58.379	Unidentified	0.43
58.239		100.00

Chromatogram Patchouli C:\GCMSsolution\Data\EOU\Academic\Patchouli B151008O001.qgd



Comments:

Typical Ranges of Main Components: