

Sample Information

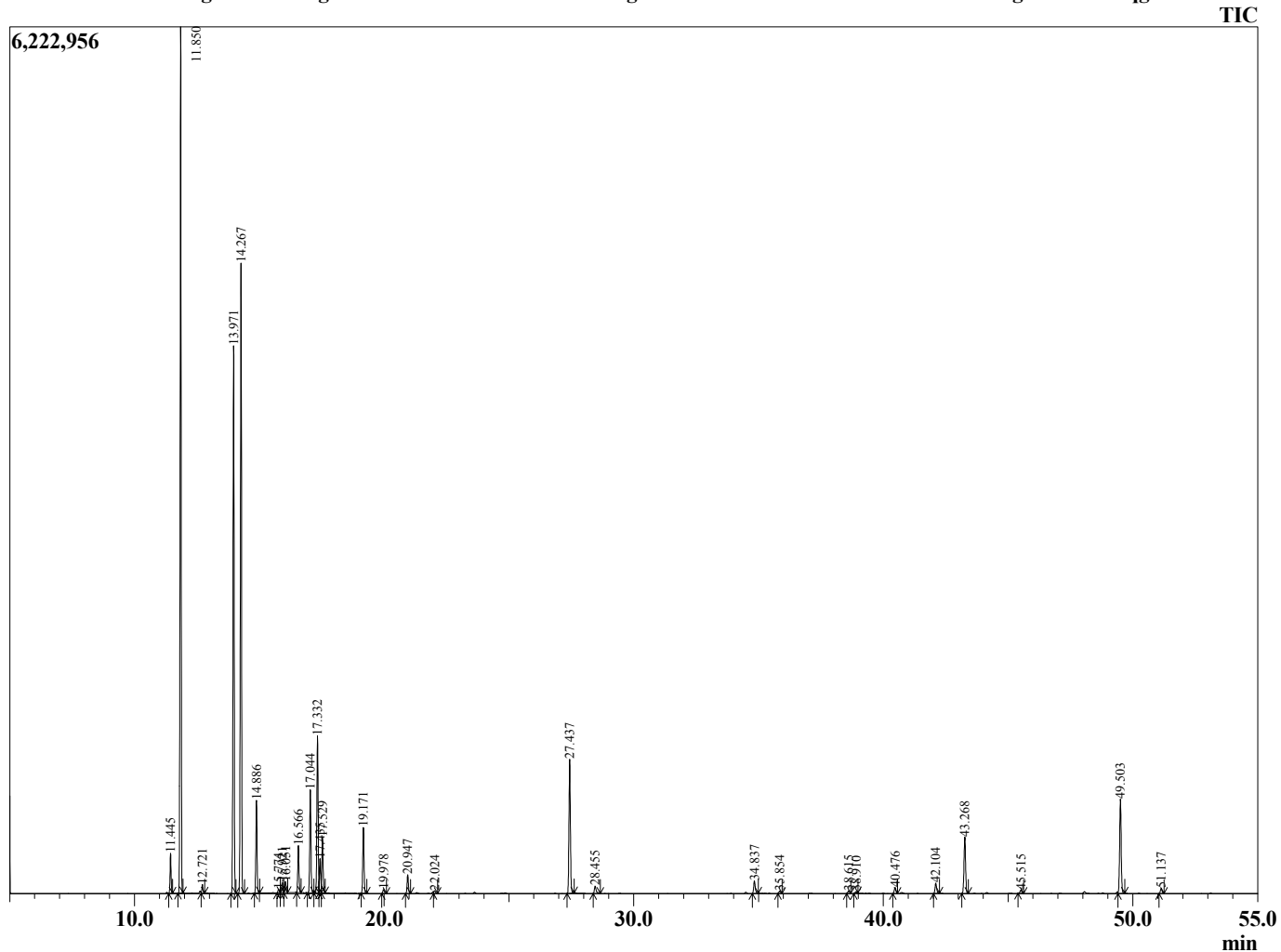
Analyzed by : Tanner Wortham
 Analyzed : 10/24/15 4:38:55 AM
 Sample Type : Essential Oil
 Sample Name : Nutmeg
 Sample ID : B151019S
 Injection Volume : 0.10
 Data File : C:\Users\Tanner Wortham\Google Drive\Academic GC Raw Data\Nutmeg B15101



Peak Report TIC

R.Time	Name	Area%
11.445	Thujene <alpha>	1.13
11.850	Pinene <alpha>	25.68
12.721	Camphene	0.25
13.971	Sabinene	17.51
14.267	Pinene <beta>	20.19
14.886	Myrcene	3.04
15.774	Pseudolimonene	0.13
15.921	Phellandrene <alpha>	0.35
16.051	3-Carene	0.38
16.566	Terpinene <alpha>	1.59
17.044	Cymene <para>	3.59
17.332	Limonene	5.51
17.435	Phellandrene <beta>	1.12
17.529	1,8-cineole	1.94
19.171	Terpinene <gamma>	2.36
19.978	4-Thujanol <trans>	0.15
20.947	Terpinolene	0.68
22.024	Sabinene hydrate <trans>	0.12
27.437	Terpinen-4-ol	5.39
28.455	Terpineol <alpha>	0.35
34.837	Safrole	0.54
35.854	Unidentified	0.10
38.615	Unidentified	0.12
38.910	Eugenol	0.08
40.476	Copaene <alpha>	0.26
42.104	Methyleugenol	0.46
43.268	Caryophyllene <trans>	2.52
45.515	Humulene <alpha>	0.16
49.503	Myristicin	4.07
51.137	Elimicin	0.22
		100.00

Chromatogram Nutmeg C:\Users\Tanner Wortham\Google Drive\Academic GC Raw Data\Nutmeg B151019S.qgd



Comments:

Typical Ranges of Main Components: