

Sample Information

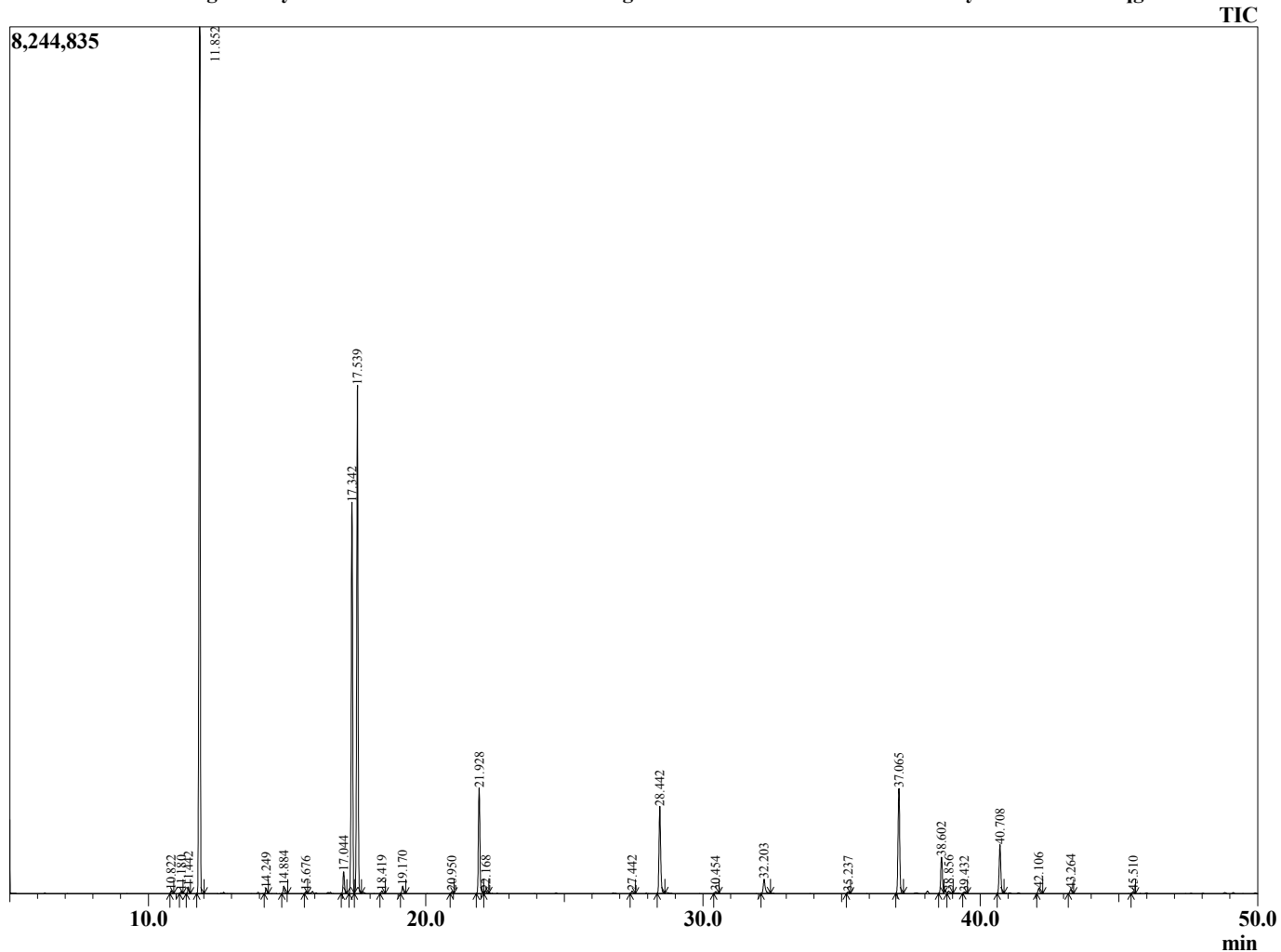
Analyzed by : Tanner Wortham
 Analyzed : 10/24/15 10:27:38 AM
 Sample Type : Essential Oil
 Sample Name : Myrtle
 Sample ID : B151019M
 Injection Volume : 0.10
 Data File : C:\Users\Tanner Wortham\Google Drive\Academic GC Raw Data\Myrtle B151019



Peak Report TIC

R.Time	Name	Area%
10.822	Isobutyl isobutyrate	0.11
11.180	Pinene isomer	0.08
11.442	Thujene <alpha->	0.25
11.852	Pinene <alpha->	34.56
14.249	Pinene <beta->	0.23
14.884	Myrcene	0.34
15.676	Isobutyl 2-methylbutanoate	0.07
17.044	Cymene <para->	0.98
17.342	Limonene	17.99
17.539	1,8-cineole	22.49
18.419	Ocimene <E-beta>	0.13
19.170	Terpinene <gamma>	0.35
20.950	Terpinolene	0.09
21.928	Linalool	5.09
22.168	Methyl butyl-2-methyl butyrate<2>	0.13
27.442	Terpinen-4-ol	0.13
28.442	Terpineol <alpha>	4.70
30.454	Nerol	0.11
32.203	Geraniol	0.91
35.237	Pinocarvyl acetate <trans>	0.09
37.065	Myrtenyl acetate	5.67
38.602	Terpinyl acetate <alpha>	2.02
38.856	Citronellyl acetate	0.16
39.432	Neryl acetate	0.08
40.708	Geranyl acetate	2.62
42.106	Methyleugenol	0.29
43.264	Caryophyllene <trans>	0.23
45.510	Humulene <alpha->	0.10
		100.00

Chromatogram Myrtle C:\Users\Tanner Wortham\Google Drive\Academic GC Raw Data\Myrtle B151019M.qgd



Comments:

Typical Ranges of Main Components: