

Sample Information

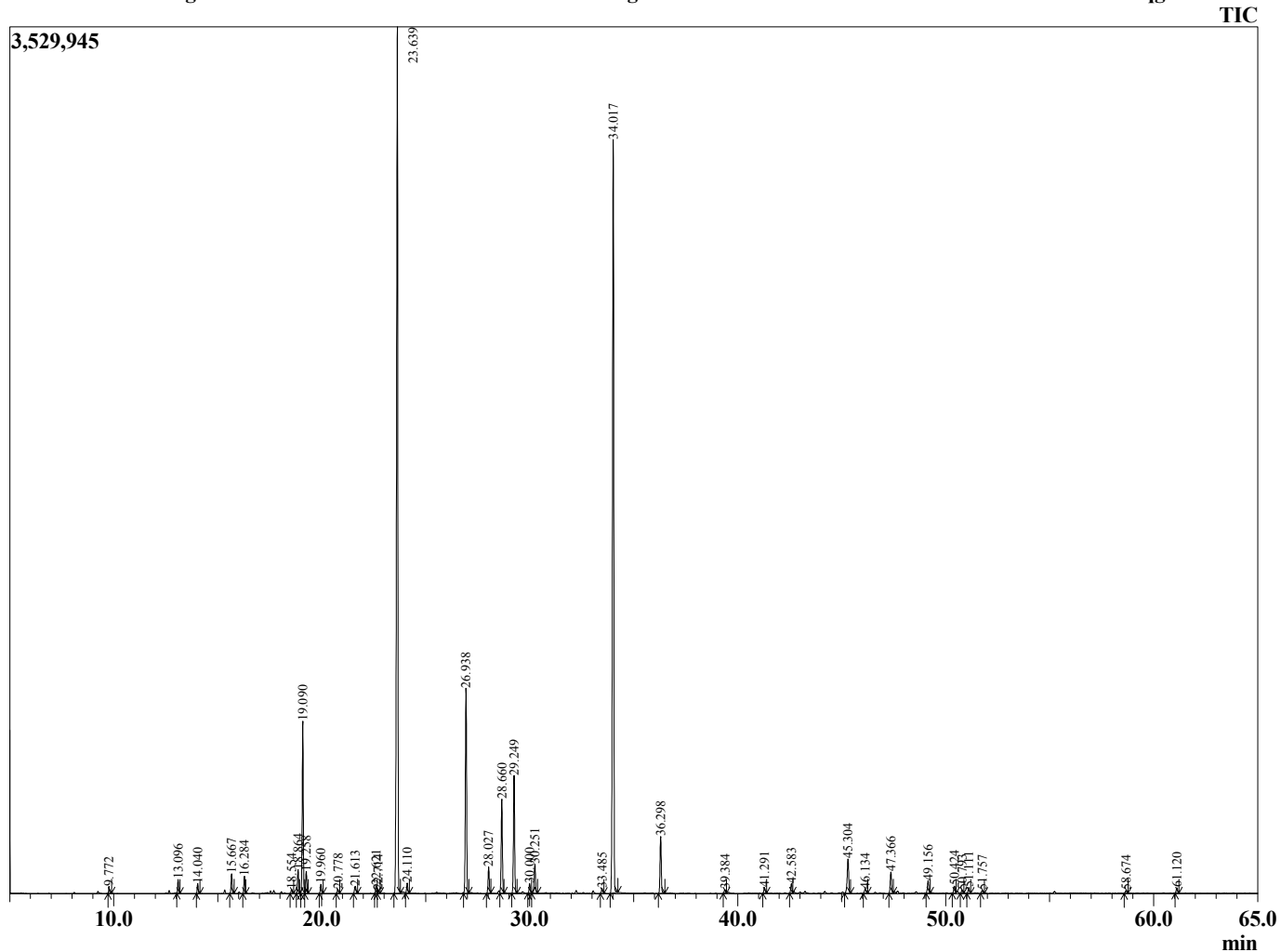
Analyzed by : Tanner Wortham
 Analyzed : 10/21/15 8:24:34 PM
 Sample Type : Essential Oil
 Sample Name : Lavandin
 Sample ID : B151019J
 Injection Volume : 0.10
 Data File : C:\Users\Tanner Wortham\Google Drive\Academic GC Raw Data\Lavandin B151019J



Peak Report TIC

R.Time	Name	Area%
9.772	Hexanol <n>	0.18
13.096	Pinene <alpha>	0.39
14.040	Camphene	0.28
15.667	Pinene <beta>	0.65
16.284	Myrcene	0.52
18.554	Cymene <para>	0.14
18.864	Limonene	0.78
19.090	1,8-cineole	5.61
19.258	Ocimene <Z-beta>	0.72
19.960	Ocimene <E-beta>	0.31
20.778	Terpinene <gamma>	0.15
21.613	4-Thujanol <trans>	0.31
22.621	Terpinolene	0.27
22.714	Linalool oxide <trans-(furanoid)>	0.12
23.639	Linalool	34.47
24.110	Octen-3-yl acetate<1>	0.36
26.938	Camphor	7.52
28.027	Lavandulol	0.96
28.660	Borneol	3.47
29.249	Terpinen-4-ol	4.33
30.000	Hexyl butanoate	0.35
30.251	Terpineol <alpha>	1.09
33.485	Hexyl Isovalerate	0.19
34.017	Linalyl acetate	29.64
36.298	Lavandulyl acetate	2.13
39.384	Tiglate hexyl	0.14
41.291	Neryl acetate	0.22
42.583	Geranyl acetate	0.39
45.304	Caryophyllene <trans>	1.57
46.134	Bergamotene <trans-alpha> + Coumarin	0.19
47.366	Farnesene<(E)-beta>	0.87
49.156	Germacrene D	0.53
50.424	Lavandulyl isovalerate	0.31
50.793	Bisabolene <beta>	0.13
51.111	Cadinene <gamma>	0.24
51.757	Sesquiphellandrene <beta>	0.11
58.674	Cadinol <tau>	0.12
61.120	Bisabolol <alpha>	0.22
		100.00

Chromatogram Lavandin C:\Users\Tanner Wortham\Google Drive\Academic GC Raw Data\Lavandin B151019J.qgd



Comments:

Typical Ranges of Main Components: