

Sample Information

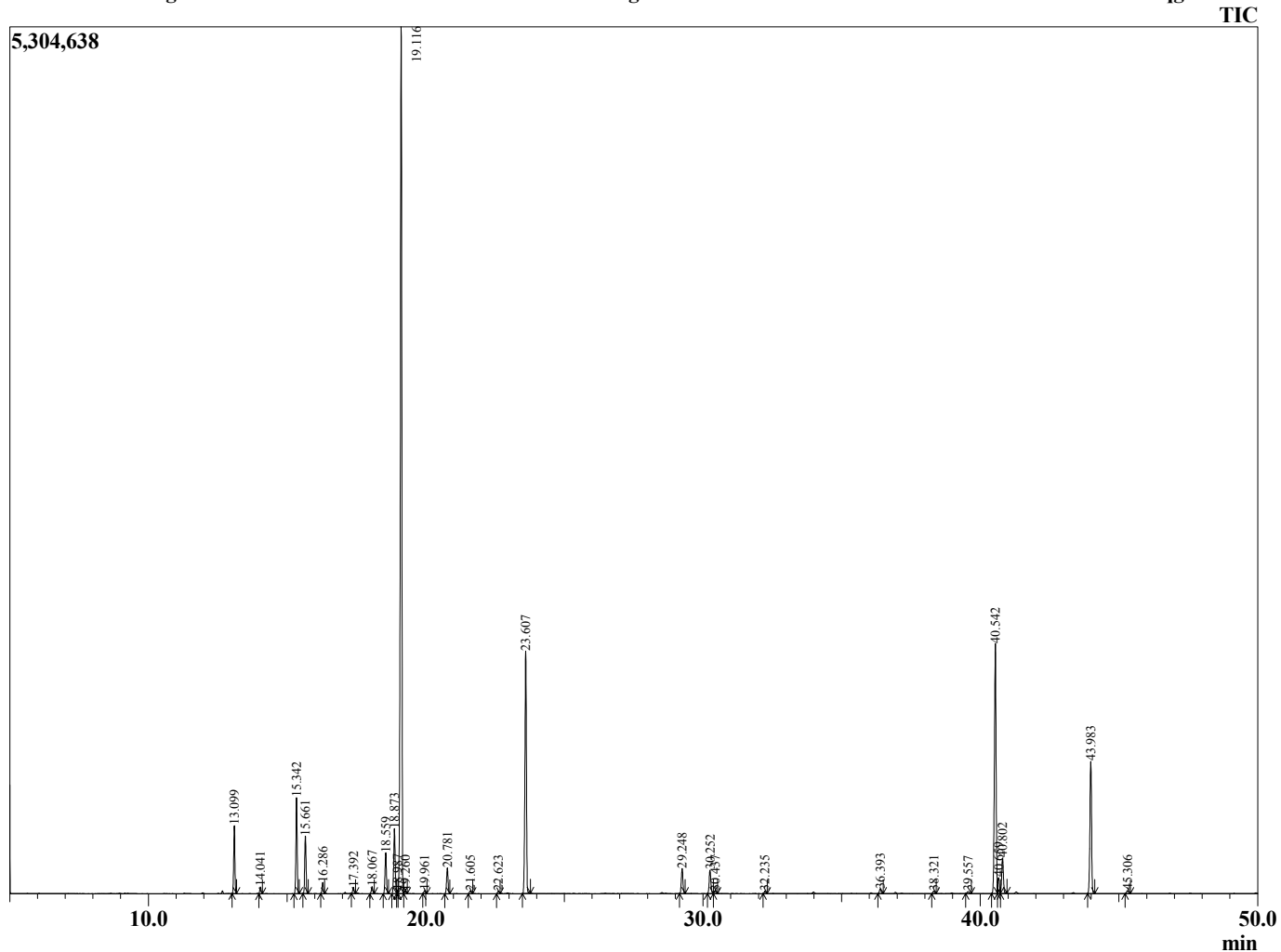
Analyzed by : Tanner Wortham
 Analyzed : 10/21/15 6:27:54 PM
 Sample Type : Essential Oil
 Sample Name : Laurel Leaf
 Sample ID : B151019I
 Injection Volume : 0.10
 Data File : C:\Users\Tanner Wortham\Google Drive\Academic GC Raw Data\Laurel Leaf B1



Peak Report TIC

R.Time	Name	Area%
13.099	Pinene <alpha>	2.70
14.041	Camphene	0.28
15.342	Sabinene	4.06
15.661	Pinene <beta>	2.45
16.286	Myrcene	0.49
17.392	Phellandrene <alpha>	0.27
18.067	Terpinene <alpha>	0.32
18.559	Cymene <para>	1.91
18.873	Limonene	3.14
18.987	Phellandrene <beta>	0.14
19.116	1,8-cineole	42.73
19.260	Ocimene <Z-beta>	0.12
19.961	Ocimene <E-beta>	0.14
20.781	Terpinene <gamma>	1.26
21.605	4-Thujanol <trans>	0.15
22.623	Terpinolene	0.13
23.607	Linalool	12.16
29.248	Terpinen-4-ol	1.32
30.252	Terpineol <alpha>	1.30
30.437	Methyl chavicol	0.13
32.235	Nerol	0.12
36.393	Bornyl acetate	0.26
38.321	Terpinyl acetate <delta>	0.13
39.557	Terpinyl acetate <beta>	0.11
40.542	Terpinyl acetate <alpha>	13.97
40.659	Terpinyl acetate <isomer>	0.81
40.802	Eugenol	1.93
43.983	Methyleugenol	7.29
45.306	Caryophyllene <trans>	0.17
		100.00

Chromatogram Laurel Leaf C:\Users\Tanner Wortham\Google Drive\Academic GC Raw Data\Laurel Leaf B151019I.qgd



Comments:

Typical Ranges of Main Components: