

Sample Information

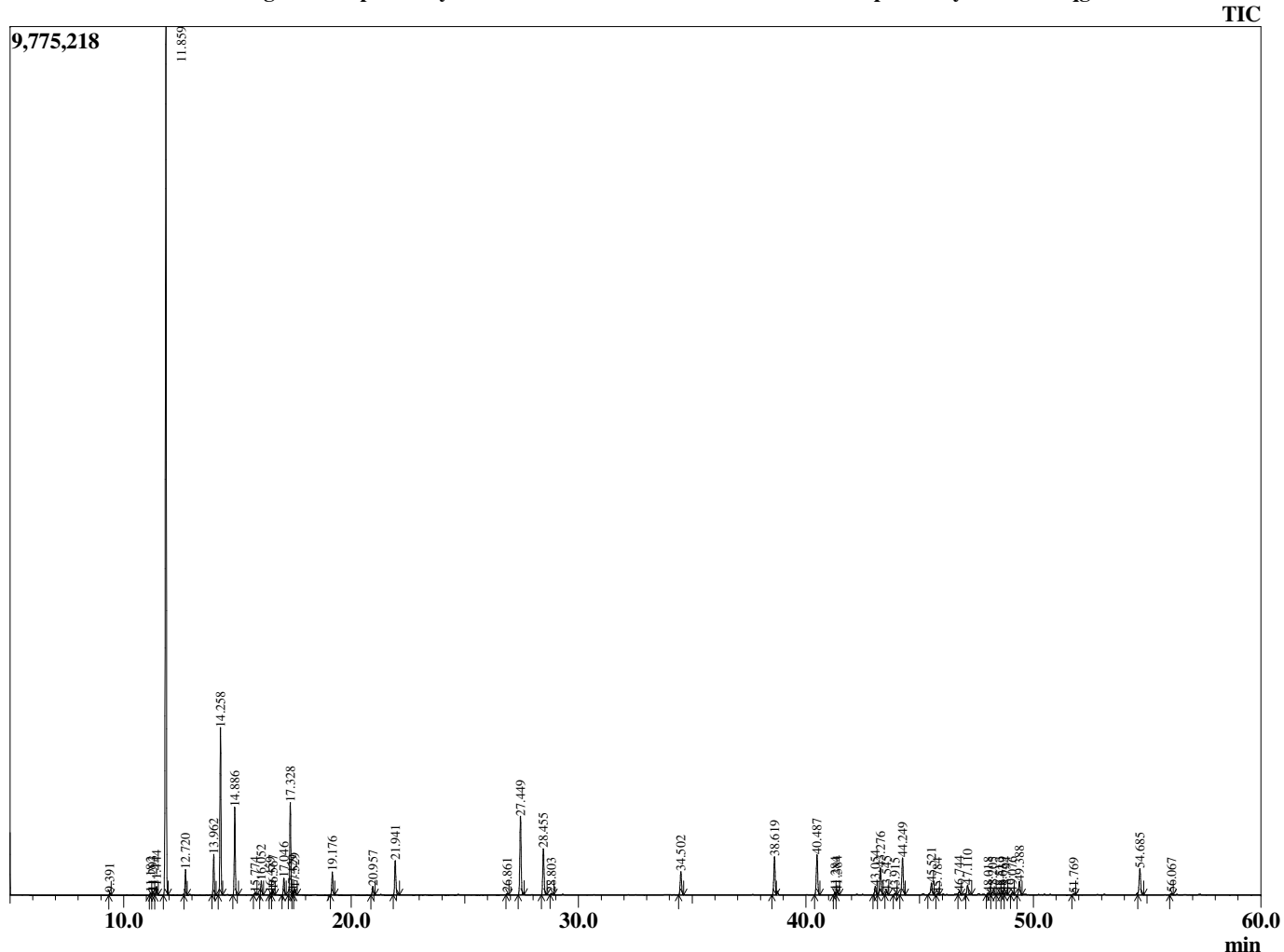
Analyzed by : Tanner Wortham  
 Analyzed : 10/10/2015 3:29:27 PM  
 Sample Type : Essential Oil  
 Sample Name : Juniper Berry  
 Sample ID : B151008P  
 Injection Volume : 0.10  
 Data File : C:\GCMSsolution\Data\EOU\Academic\Juniper Berry B151008P.qgd



Peak Report TIC

R.Time	Name	Area%
9.391	Santene	0.10
11.182	Pinene isomer	0.10
11.293	Tricyclene	0.16
11.444	Thujene <alpha->	0.40
11.859	Pinene <alpha->	43.46
12.720	Camphene	1.24
13.962	Sabinene	2.05
14.258	Pinene <beta->	8.64
14.886	Myrcene	4.53
15.774	Pseudolimonene	0.13
16.052	3-Carene	0.75
16.459	1,4-Cineole	0.12
16.567	Terpinene <alpha->	0.26
17.046	Cymene <para->	0.92
17.328	Limonene	5.21
17.429	Phellandrene <beta->	0.22
17.529	1,8-cineole	0.35
19.176	Terpinene <gamma->	1.33
20.957	Terpinolene	0.51
21.941	Linalool	2.12
26.861	Borneol	0.10
27.449	Terpinen-4-ol	5.10
28.455	Terpineol <alpha->	3.02
28.803	Terpineol <gamma->	0.09
34.502	Bornyl acetate	1.56
38.619	Terpinyl acetate <alpha->	2.58
40.487	Copaene <alpha->	2.87
41.284	Cubebene <beta->	0.17
41.384	Elemene <beta->	0.22
43.054	Cedrene <alpha->	0.63
43.276	Caryophyllene <trans->	1.95
43.545	Cedrene <beta->	0.21
43.915	Elemene <gamma->	0.11
44.249	Thujopsene <cis->	2.64
45.521	Humulene <alpha->	0.91
45.784	Alloaromadendrene	0.09
46.744	Cadina-1(6),4-diene <trans->	0.24
47.110	Germacrene D	0.74
48.018	Selinene <alpha->	0.15
48.205	Murolene <alpha->	0.24
48.513	Himalchalone <beta->	0.16
48.639	Chamigrene <alpha->	0.14
48.794	Cuparene	0.16
49.076	Cadinene <gamma->	0.15
49.388	Cadinene <delta->	0.98
51.769	Germacrene B	0.10
54.685	Cedrol	2.04
56.067	Acorenol <alpha->	0.10
		100.00

Chromatogram Juniper Berry C:\GCMSsolution\Data\EOU\Academic\Juniper Berry B151008P.qgd



Comments:

Typical Ranges of Main Components: