

Sample Information

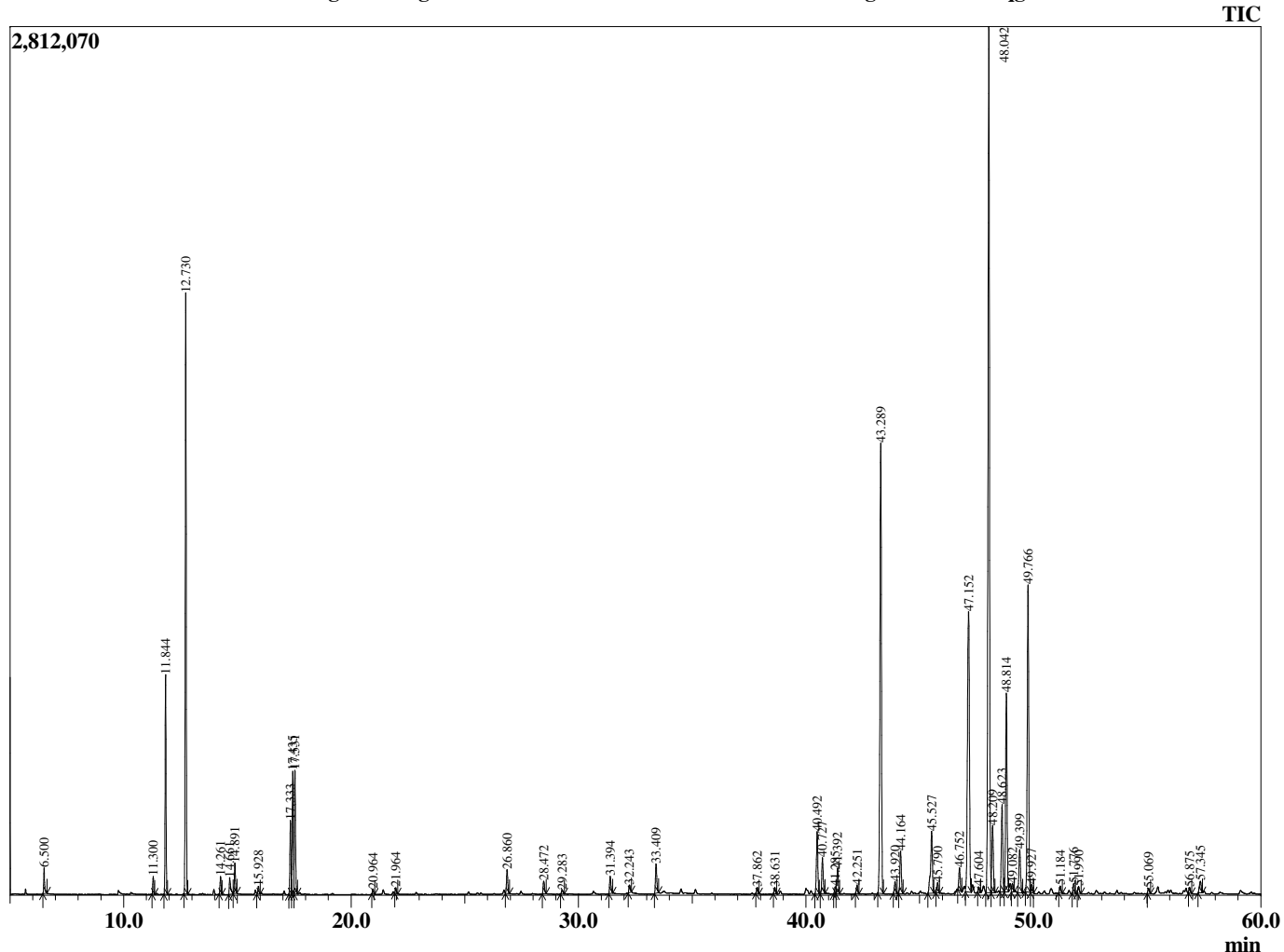
Analyzed by : Tanner Wortham  
 Analyzed : 10/8/2015 6:33:27 PM  
 Sample Type : Essential Oil  
 Sample Name : Ginger  
 Sample ID : B151008A  
 Injection Volume : 0.10  
 Data File : C:\GCMSsolution\Data\EOU\Academic\Ginger B151008A.qgd



Peak Report TIC

R.Time	Name	Area%
6.500	Hexanal	0.43
11.300	Tricyclene	0.30
11.844	Pinene <alpha>	3.76
12.730	Camphene	10.68
14.261	Pinene <beta>	0.33
14.661	Hept-5-en-2-one <6-methyl->	0.42
14.891	Myrcene	0.60
15.928	Phellandrene <alpha->	0.16
17.333	Limonene	1.41
17.435	Phellandrene <beta>	2.49
17.531	1,8-cineole	2.51
20.964	Terpinolene	0.10
21.964	Linalool	0.12
26.860	Borneol	0.57
28.472	Terpineol <alpha>	0.32
29.283	Decanal	0.11
31.394	Neral	0.43
32.243	Geraniol	0.19
33.409	Geranial	0.72
37.862	Elemene <delta->	0.14
38.631	Cubebene <alpha>	0.15
40.492	Copaene <alpha>	1.62
40.727	Geranyl acetate	0.93
41.285	Cubebene <beta>	0.17
41.392	Elemene <beta>	0.66
42.251	Cedr-8-ene	0.22
43.289	Caryophyllene <trans>	12.12
43.920	Elemene <gamma>	0.30
44.164	Bergamotene <trans-alpha>	1.10
45.527	Humulene <alpha>	2.01
45.790	Alloaromadendrene	0.26
46.752	Cadina-1(6),4-diene <trans>	0.56
47.152	Ar-Curcumene	9.98
47.604	Selinene <beta->	0.12
48.042	Zingiberene<alpha>	23.60
48.209	Muurolene <alpha>	1.82
48.623	Farnesene <alpha>	2.24
48.814	Bisabolene <beta->	5.22
49.082	Cadinene <gamma->	0.23
49.399	Cadinene <delta->	1.25
49.766	Sesquiphellandrene <beta>	8.14
49.927	Bisabolene <E-gamma>	0.23
51.184	Elemol	0.19
51.776	Germacrene B	0.25
51.990	Nerolidol <trans>	0.18
55.069	Zingiberenol	0.14
56.875	Cadinol <delta>	0.14
57.345	Cadinol <alpha-isomer2>	0.38
		100.00

Chromatogram Ginger C:\GCMSsolution\Data\EOU\Academic\Ginger B151008A.qgd



Comments:

Typical Ranges of Main Components: