

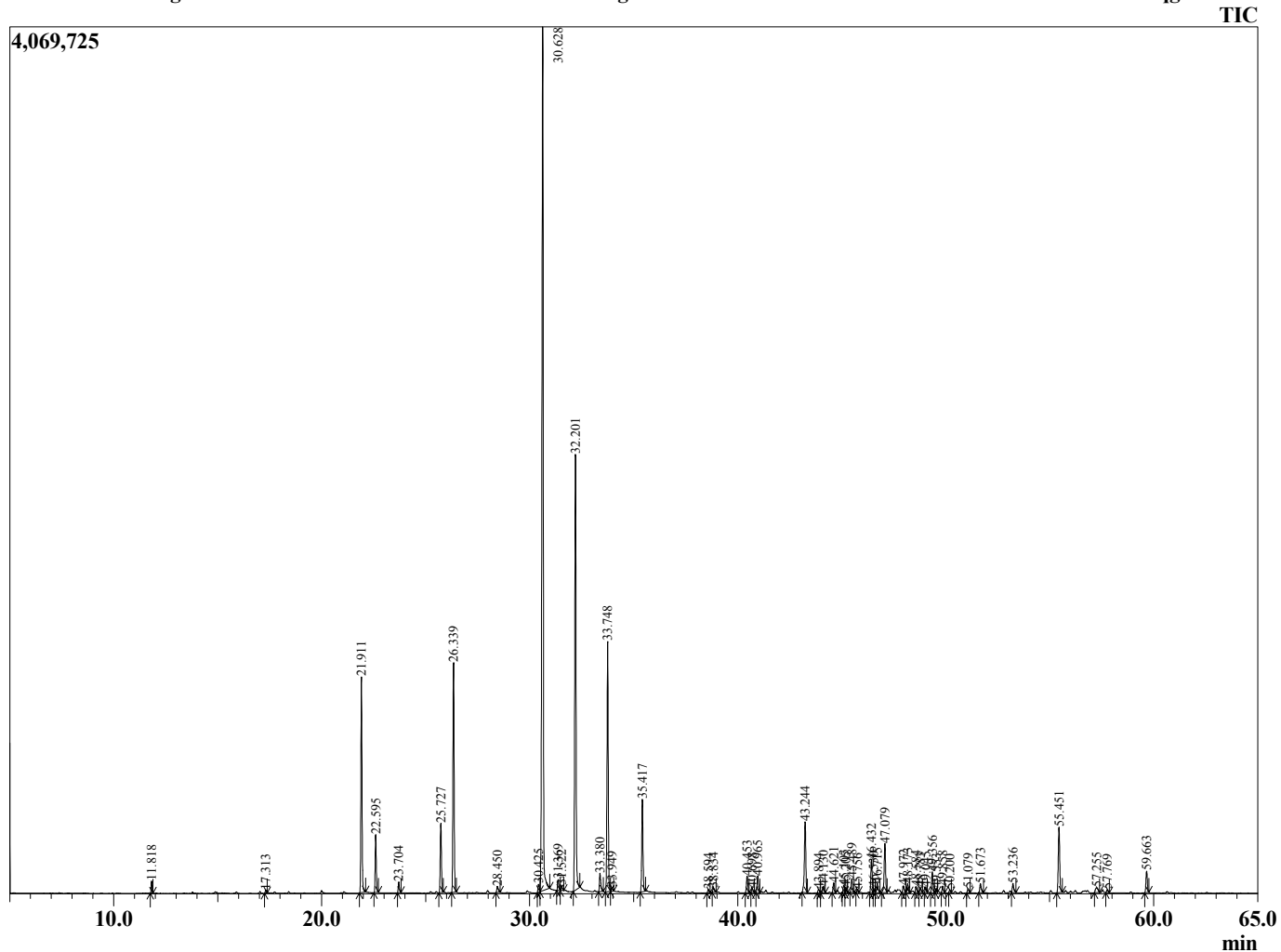
Sample Information

Analyzed by : Tanner Wortham
 Analyzed : 10/23/15 3:07:35 AM
 Sample Type : Essential Oil
 Sample Name : Geranium
 Sample ID : B151019AB
 Injection Volume : 0.10
 Data File : C:\Users\Tanner Wortham\Google Drive\Academic GC Raw Data\Geranium B151



R.Time	Name	Area%
11.818	Pinene <alpha>	0.30
17.313	Limonene	0.09
21.911	Linalool	6.67
22.595	Rose oxide <cis>	1.89
23.704	Rose oxide <trans>	0.36
25.727	Menthone	2.32
26.339	Menthone <iso>	7.67
28.450	Unidentified	0.26
30.425	Nerol	0.30
30.628	Citronellol	33.74
31.369	Neral	0.41
31.522	Unidentified	0.20
32.201	Geraniol	15.33
33.380	Geranial	0.70
33.748	Citronellyl formate	8.72
33.949	Unidentified	0.15
35.417	Geranyl formate	3.24
38.594	Cubebene <alpha>	0.13
38.834	Citronellyl acetate	0.17
40.453	Copaene <alpha>	0.62
40.698	Geranyl acetate	0.16
40.965	Bourbonene <alpha>	0.62
43.244	Caryophyllene <trans>	2.87
43.894	Copaene <beta>	0.14
44.130	Bergamotene <trans-alpha>	0.25
44.621	Unidentified	0.39
45.103	Muurolene <gamma>	0.29
45.205	Murrola-3,5-diene <trans>	0.19
45.489	Humulene <alpha>	0.51
45.756	Alloaromadendrene	0.11
46.432	Geranyl propanoate	1.26
46.530	Unidentified	0.14
46.715	Cadina-1(6),4-diene <trans>	0.41
47.079	Germacrene D	1.95
47.972	Bicyclogermacrene	0.30
48.173	Unidentified	0.35
48.584	Farnesene <(E,E)alpha>	0.22
48.783	Bisabolene <beta>	0.20
49.045	Cadinene <gamma>	0.19
49.356	Cadinene <delta>	0.80
49.553	Calamenene <trans>	0.15
49.858	Citronellyl butyrate	0.25
50.200	Cadina-1,4-diene <trans>	0.11
51.079	Ledene alcohol	0.16
51.673	Geranyl butyrate	0.39
53.236	Phenylethyl tiglate	0.38
55.451	Eudesmol <gamma>	2.62
57.255	Unidentified	0.35
57.769	Citronellyl Tiglate	0.11
59.663	Geranyl Tiglate	0.83
		100.00

Chromatogram Geranium C:\Users\Tanner Wortham\Google Drive\Academic GC Raw Data\Geranium B151019AB.qgd



Comments:

Typical Ranges of Main Components: