

Sample Information

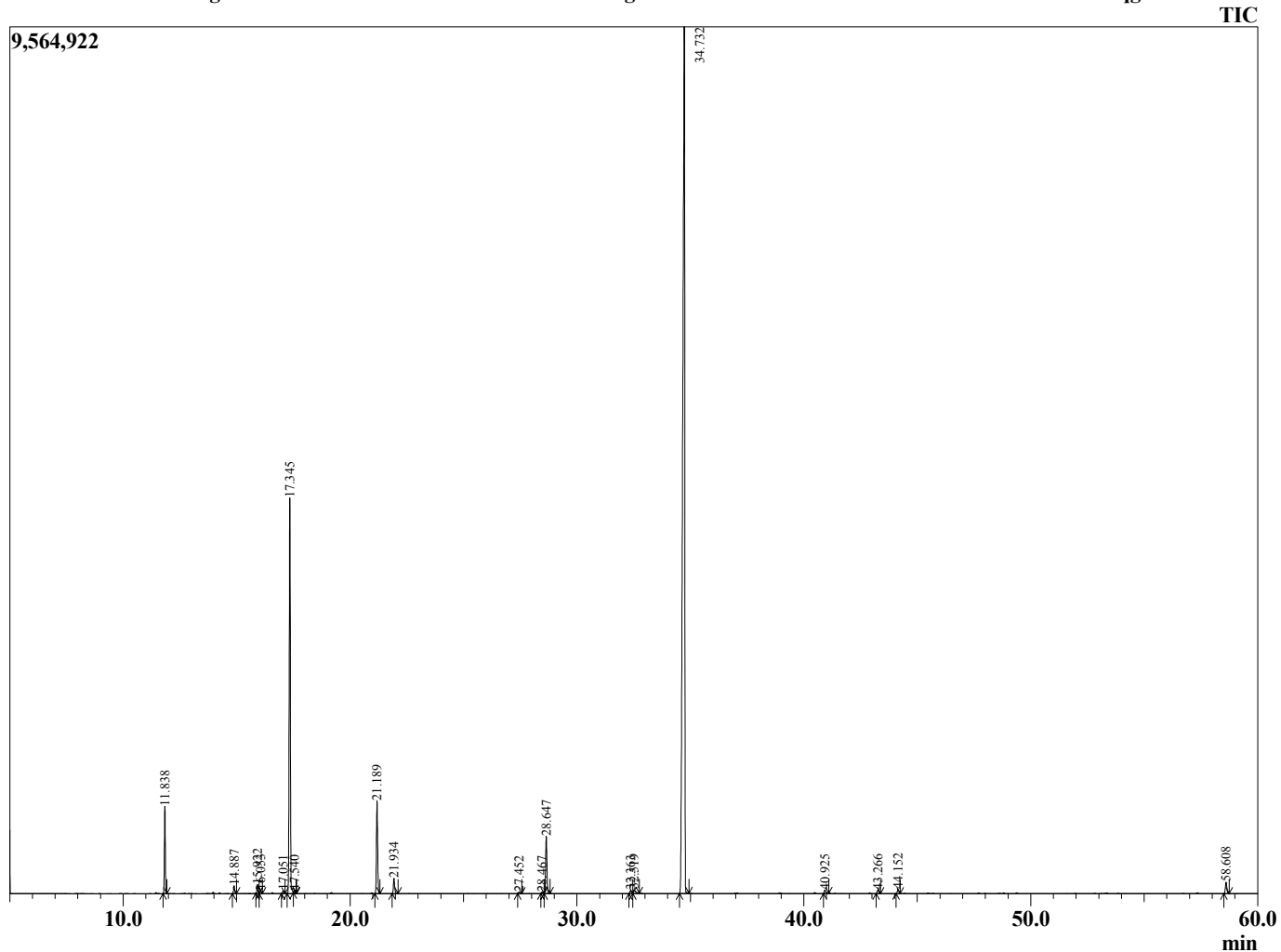
Analyzed by : Tanner Wortham
 Analyzed : 10/24/15 12:24:08 PM
 Sample Type : Essential Oil
 Sample Name : Fennel
 Sample ID : B1510190
 Injection Volume : 0.10
 Data File : C:\Users\Tanner Wortham\Google Drive\Academic GC Raw Data\Fennel B151019



Peak Report TIC

R.Time	Name	Area%
11.838	Pinene <alpha>	3.20
14.887	Myrcene	0.34
15.922	Phellandrene <alpha->	0.37
16.053	3-Carene	0.14
17.051	Cymene <para->	0.13
17.345	Limonene	17.82
17.540	1,8-cineole	0.10
21.189	Fenchone	4.27
21.934	Linalool	0.75
27.452	Terpinen-4-ol	0.09
28.467	Terpineol <alpha>	0.07
28.647	Methyl chavicol	2.91
32.363	Anethole <cis>	0.15
32.519	Anisaldehyde <para>	0.27
34.732	Anethole <trans>	68.09
40.925	Anisyl methyl ketone	0.21
43.266	Caryophyllene <trans>	0.20
44.152	Bergamotene <trans-alpha>	0.23
58.608	Foeniculin	0.64
		100.00

Chromatogram Fennel C:\Users\Tanner Wortham\Google Drive\Academic GC Raw Data\Fennel B1510190.qgd



Comments:

Typical Ranges of Main Components: