

Sample Information

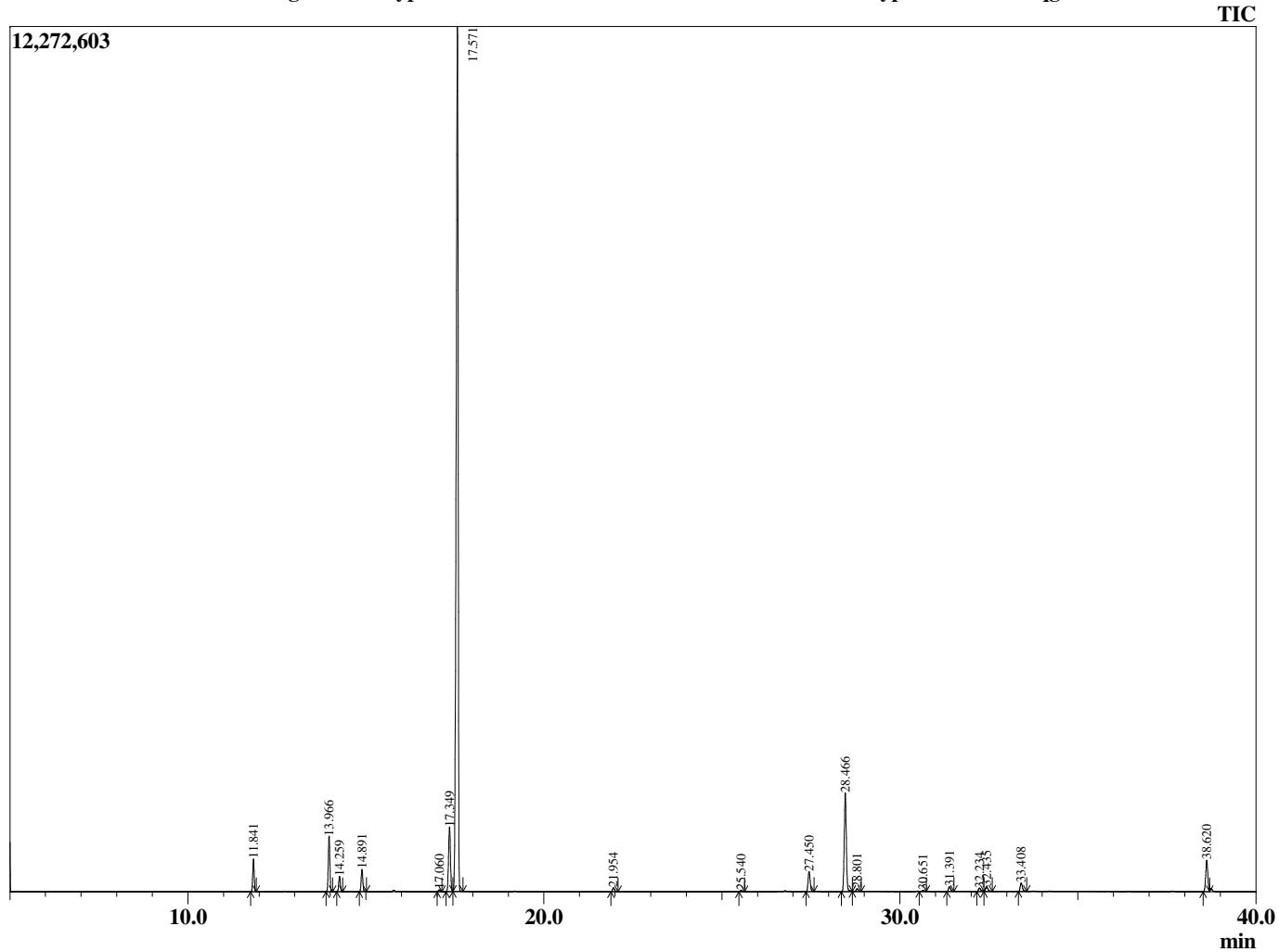
Analyzed by : Tanner Wortham  
 Analyzed : 10/9/2015 2:18:10 AM  
 Sample Type : Essential Oil  
 Sample Name : Eucalyptus  
 Sample ID : B151008E  
 Injection Volume : 0.10  
 Data File : C:\GCMSsolution\Data\EOU\Academic\Eucalyptus B151008E.qgd



Peak Report TIC

R.Time	Name	Area%
11.841	Pinene <alpha>	1.99
13.966	Sabinene	3.62
14.259	Pinene <beta->	1.04
14.891	Myrcene	1.51
17.060	Cymene <para->	0.12
17.349	Limonene	5.09
17.571	1,8-cineole	70.98
21.954	Linalool	0.31
25.540	Citronellal	0.09
27.450	Terpinen-4-ol	1.70
28.466	Terpineol <alpha>	8.37
28.801	Terpineol <gamma>	0.27
30.651	Citronellol	0.09
31.391	Neral	0.43
32.234	Geraniol	0.35
32.435	Piperitone	0.47
33.408	Geranial	0.77
38.620	Terpinyl acetate <alpha>	2.78
		100.00

Chromatogram Eucalyptus C:\GCMSsolution\Data\EOU\Academic\Eucalyptus B151008E.qgd



Comments:

Typical Ranges of Main Components: