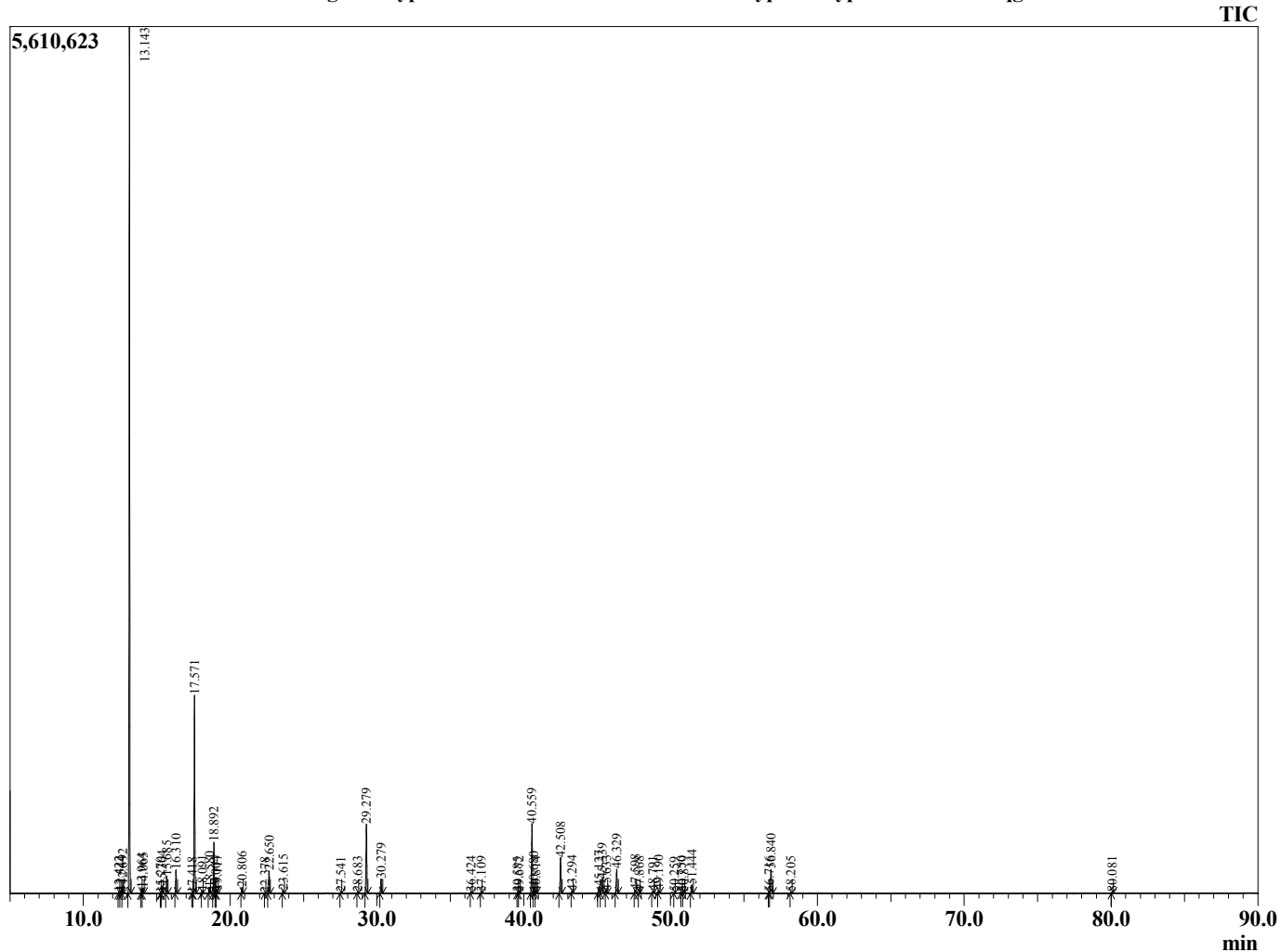


Sample Information

Analyzed by : Dr. Robert S. Pappas  
 Analyzed : 10/9/2015 2:45:28 AM  
 Sample Type : Essential Oil  
 Sample Name : Cypress  
 Sample ID : B151008L  
 Injection Volume : 0.10  
 Data File : C:\GCMSsolution\Data\EOU\Cypress\Cypress B151008L.qgd



Chromatogram Cypress C:\GCMSsolution\Data\EOU\Cypress\Cypress B151008L.qgd



R.Time	Name	Area%
12.422	Pinene isomer	0.08
12.544	Tricyclene	0.10
12.692	Thujene <alpha>	0.47
13.143	Pinene <alpha>	52.54
13.964	Fenchene <alpha>	0.28
14.065	Camphene	0.31
15.270	Cyclopentene <isomer>	0.03
15.364	Sabinene	0.44
15.685	Pinene<beta>	1.04
16.310	Myrcene	1.47
17.418	Phellandrene<alpha>	0.02
17.571	3-Carene	12.73
18.091	Terpinene <alpha>	0.17
18.580	Cymene<para>	0.43
18.892	Limonene	3.45
19.004	Phellandrene <beta>	0.12
19.117	1,8-cineole	0.21
20.806	Terpinene<gamma>	0.40
22.378	Mentha-2,4(8)-diene <p>	0.04
22.650	Terpinolene	1.56
23.615	Linalool	0.23
27.541	Karahanaenone	0.05
28.683	Borneol	0.06
29.279	Terpinen-4-ol	5.17
30.279	Terpineol <alpha>	1.10
36.424	Bornyl acetate	0.10
37.109	Thujanol acetate neoisoiso	0.07
39.585	Dihydrocarveol acetate <iso>	0.05
39.672	Terpinyl acetate<4>	0.06
40.559	Terpinyl acetate<alpha>	5.65
40.680	Terpinyl acetate <isomer>	0.46
40.814	Eugenol	0.07
42.508	Copaene <alpha>	3.00
43.294	Cubebene <beta>	0.15
45.127	Cedrene <alpha>	0.60
45.339	Caryophyllene <trans>	1.20
45.633	Cedrene<beta>	0.19
46.329	Thujopsene<Z>	2.02
47.598	Humulene <alpha>	0.26
47.868	(-)-Alloaromadendrene	0.07
48.791	Cadina-1(6),4-diene <trans>	0.14
49.190	Gurjunene <gamma>	0.21
50.259	Muurolene <alpha>	0.04
50.750	Chamigrene <alpha>	0.06
50.879	Cuparene	0.08
51.444	Cadinene <delta>	0.68
56.716	Widdrol	0.09
56.840	Cedrol	2.09
58.205	Acorenol<alpha>	0.07
80.081	Ricenaldic acid lactone	0.07
		100.00

Comments:

Typical Ranges of Main Components: