

Sample Information

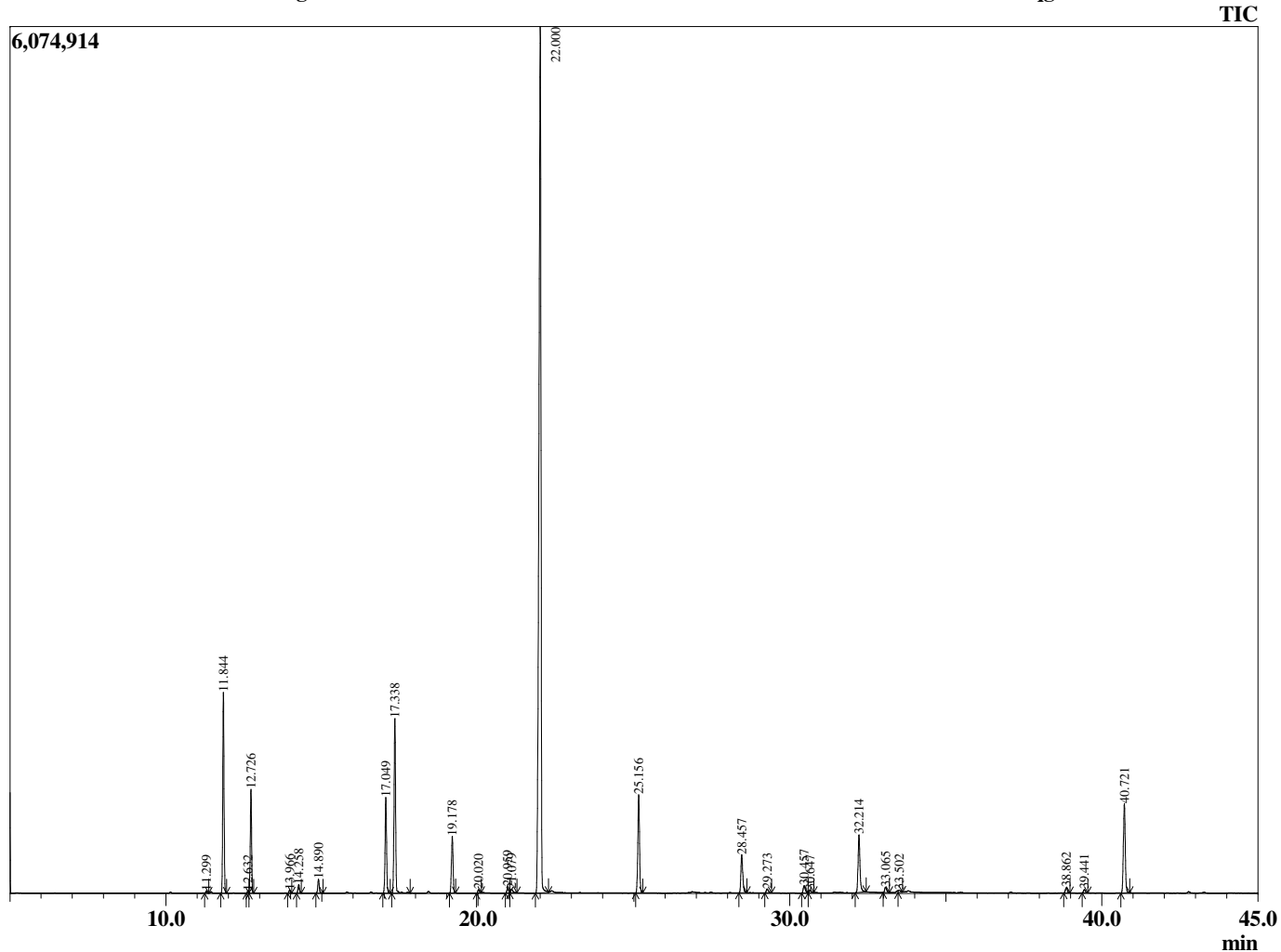
Analyzed by : Tanner Wortham
 Analyzed : 10/8/2015 10:25:42 PM
 Sample Type : Essential Oil
 Sample Name : Coriander
 Sample ID : B151008C
 Injection Volume : 0.10
 Data File : C:\GCMSsolution\Data\EOU\Academic\Coriander B151008C.qgd



Peak Report TIC

R.Time	Name	Area%
11.299	Tricyclene	0.10
11.844	Pinene <alpha>	7.72
12.632	Fenchene <alpha>	0.10
12.726	Camphene	4.19
13.966	Sabinene	0.13
14.258	Pinene <beta>	0.37
14.890	Myrcene	0.63
17.049	Cymene <para>	4.36
17.338	Limonene	8.09
19.178	Terpinene <gamma>	2.67
20.020	Linalool oxide <cis-(furanoid)>	0.16
20.959	Terpinolene	0.31
21.079	Linalool Oxide <trans-(furanoid)>	0.24
22.000	Linalool	53.56
25.156	Camphor	5.10
28.457	Terpineol <alpha>	2.15
29.273	Decanal	0.25
30.457	Nerol	0.45
30.647	Citronellol	0.16
32.214	Geraniol	3.37
33.065	Decenal <2E>	0.31
33.502	Decen-1-ol <(2E)>	0.15
38.862	Citronellyl acetate	0.31
39.441	Neryl acetate	0.18
40.721	Geranyl acetate	4.93
		100.00

Chromatogram Coriander C:\GCMSsolution\Data\EOU\Academic\Coriander B151008C.qgd



Comments:

Typical Ranges of Main Components: