

Sample Information

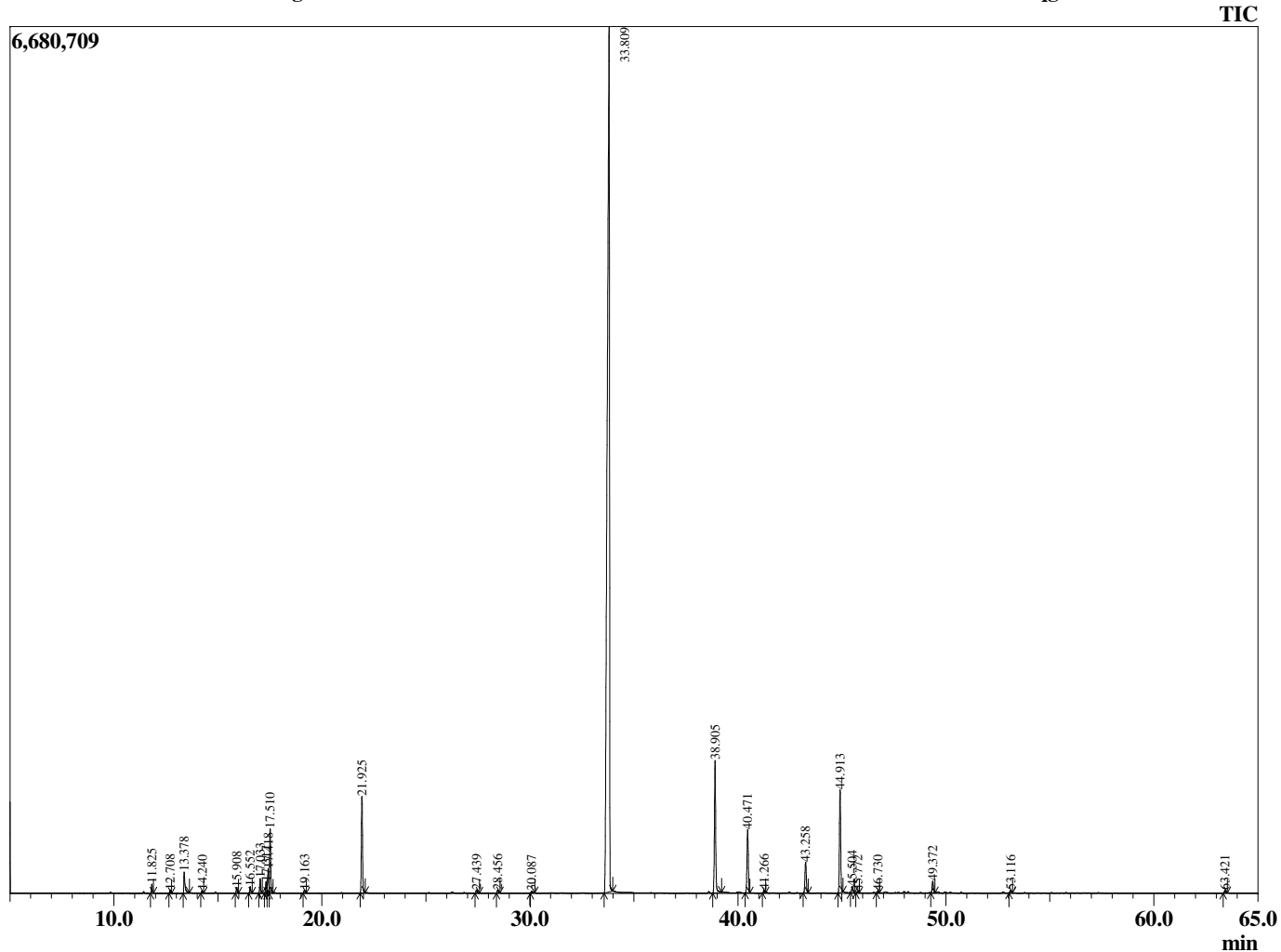
Analyzed by : Tanner Wortham
 Analyzed : 10/10/2015 11:37:06 AM
 Sample Type : Essential Oil
 Sample Name : Cinnamon
 Sample ID : B151008M
 Injection Volume : 0.10
 Data File : C:\GCMSsolution\Data\EOU\Academic\Cinnamon B151008M.qgd



Peak Report TIC

R.Time	Name	Area%
11.825	Pinene <alpha>	0.29
12.708	Camphene	0.12
13.378	Benzaldehyde	0.96
14.240	Pinene <beta>	0.09
15.908	Phellandrene <alpha>	0.23
16.552	Terpinene <alpha>	0.26
17.033	Cymene <para>	0.56
17.317	Limonene	0.45
17.418	Phellandrene <beta>	0.91
17.510	1,8-cineole	2.54
19.163	Terpinene <gamma>	0.13
21.925	Linalool	4.07
27.439	Terpinen-4-ol	0.16
28.456	Terpineol <alpha>	0.15
30.087	Cinnamaldehyde <Z>	0.13
33.809	Cinnamaldehyde <E>	71.77
38.905	Eugenol	6.35
40.471	Copaene <alpha>	3.08
41.266	Cubebene <beta>	0.14
43.258	Caryophyllene <trans>	1.56
44.913	Cinnamyl acetate <trans>	4.73
45.504	Humulene <alpha>	0.30
45.772	Alloaromadendrene	0.09
46.730	Cadina-1(6),4-diene <trans>	0.08
49.372	Cadinene <delta>	0.59
53.116	Caryophyllene oxide	0.14
63.421	Benzyl benzoate	0.14
		100.00

Chromatogram Cinnamon C:\GCMSsolution\Data\EOU\Academic\Cinnamon B151008M.qgd



Comments:

Typical Ranges of Main Components: