

Sample Information

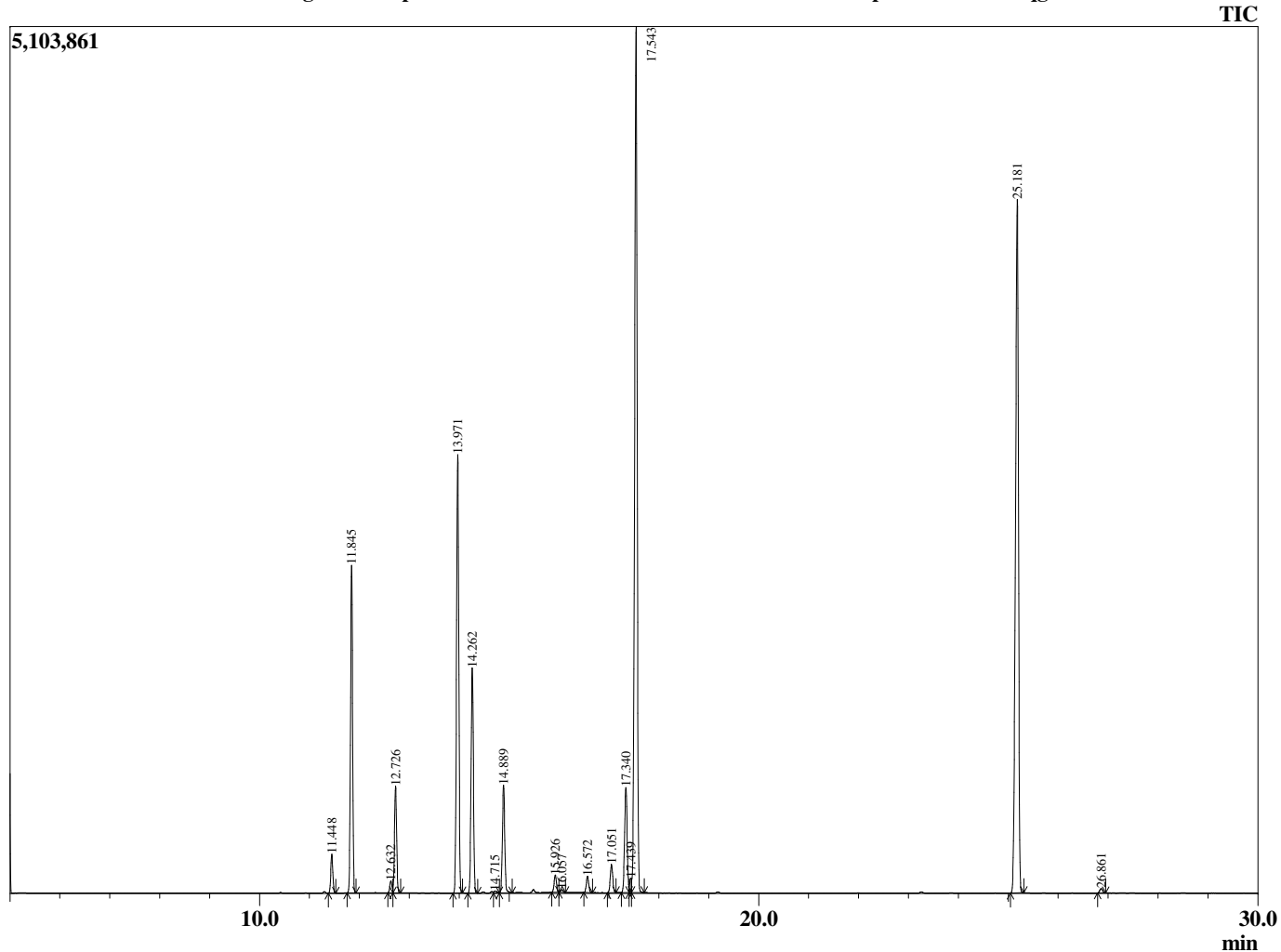
Analyzed by : Tanner Wortham
 Analyzed : 10/9/2015 6:10:26 AM
 Sample Type : Essential Oil
 Sample Name : Camphor
 Sample ID : B151008G
 Injection Volume : 0.10
 Data File : C:\GCMSsolution\Data\EOU\Academic\Camphor B151008G.qgd



Peak Report TIC

R.Time	Name	Area%
11.448	Thujene <alpha->	1.06
11.845	Pinene <alpha->	9.12
12.632	Fenchene <alpha->	0.34
12.726	Camphene	3.06
13.971	Sabinene	13.22
14.262	Pinene <beta->	6.95
14.715	Hept-5-en-2-one <6-methyl->	0.09
14.889	Myrcene	3.36
15.926	Phellandrene <alpha->	0.55
16.057	3-Carene	0.09
16.572	Terpinene <alpha->	0.52
17.051	Cymene <para->	0.92
17.340	Limonene	3.57
17.439	Phellandrene <beta->	0.35
17.543	1,8-cineole	29.27
25.181	Camphor	27.38
26.861	Borneol	0.17
		100.00

Chromatogram Camphor C:\GCMSsolution\Data\EOU\Academic\Camphor B151008G.qgd



Comments:

Typical Ranges of Main Components: