

Sample Information

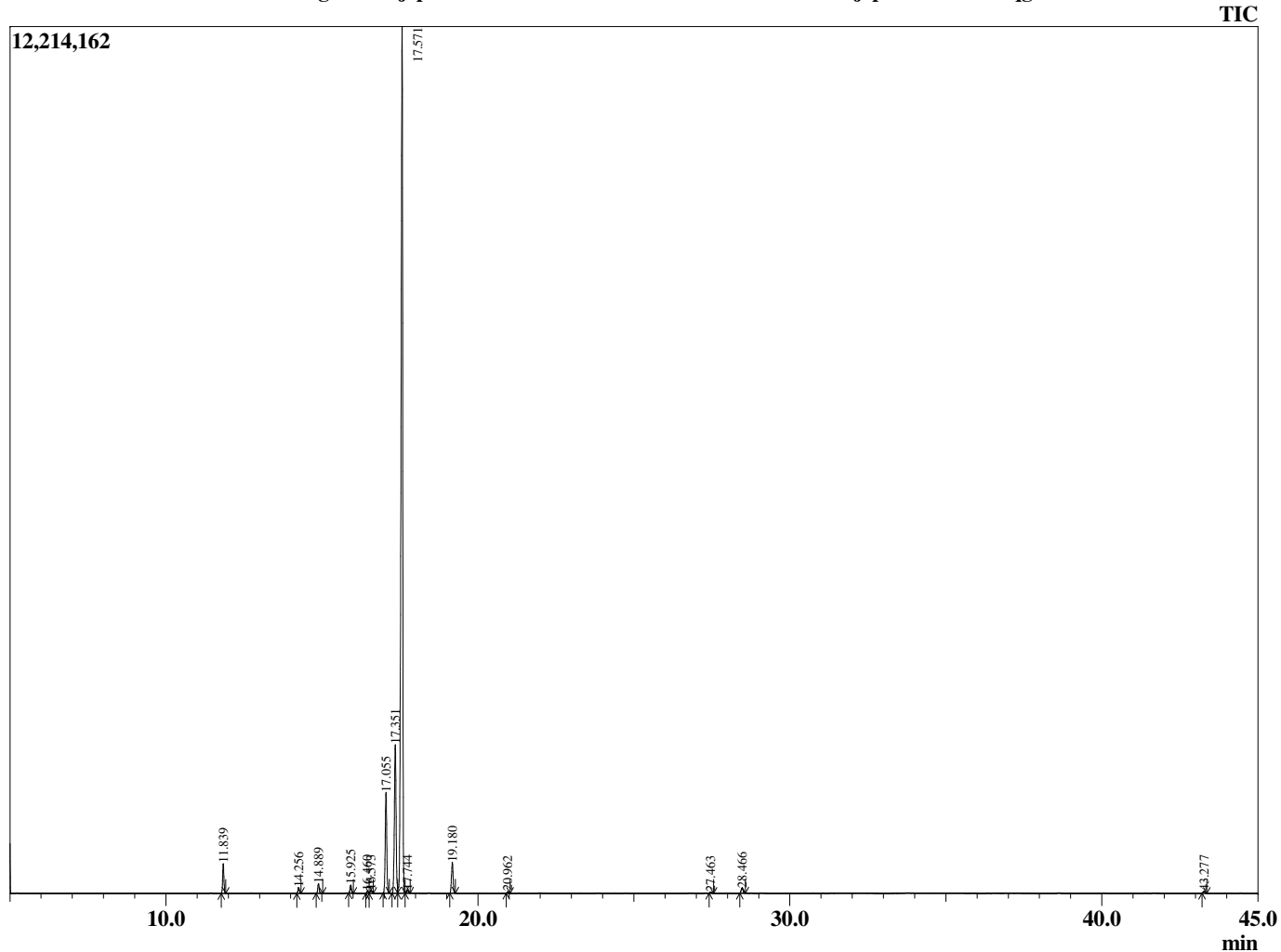
Analyzed by : Tanner Wortham
 Analyzed : 10/8/2015 8:29:35 PM
 Sample Type : Essential Oil
 Sample Name : Cajeput
 Sample ID : B151008B
 Injection Volume : 0.10
 Data File : C:\GCMSsolution\Data\EOU\Academic\Cajeput B151008B.qgd



Peak Report TIC

R.Time	Name	Area%
11.839	Pinene <alpha>	1.82
14.256	Pinene <beta>	0.37
14.889	Myrcene	0.69
15.925	Phellandrene <alpha>	0.56
16.460	1,4-Cineole	0.17
16.573	Terpinene <alpha>	0.23
17.055	Cymene <para>	7.55
17.351	Limonene	12.32
17.571	1,8-cineole	72.88
17.744	Ocimene <Z-beta>	0.21
19.180	Terpinene <gamma>	2.35
20.962	Terpinolene	0.12
27.463	Terpinen-4-ol	0.10
28.466	Terpineol <alpha>	0.46
43.277	Caryophyllene <trans>	0.16
		100.00

Chromatogram Cajeput C:\GCMSsolution\Data\EOU\Academic\Cajeput B151008B.qgd



Comments:

Typical Ranges of Main Components: