

Sample Information

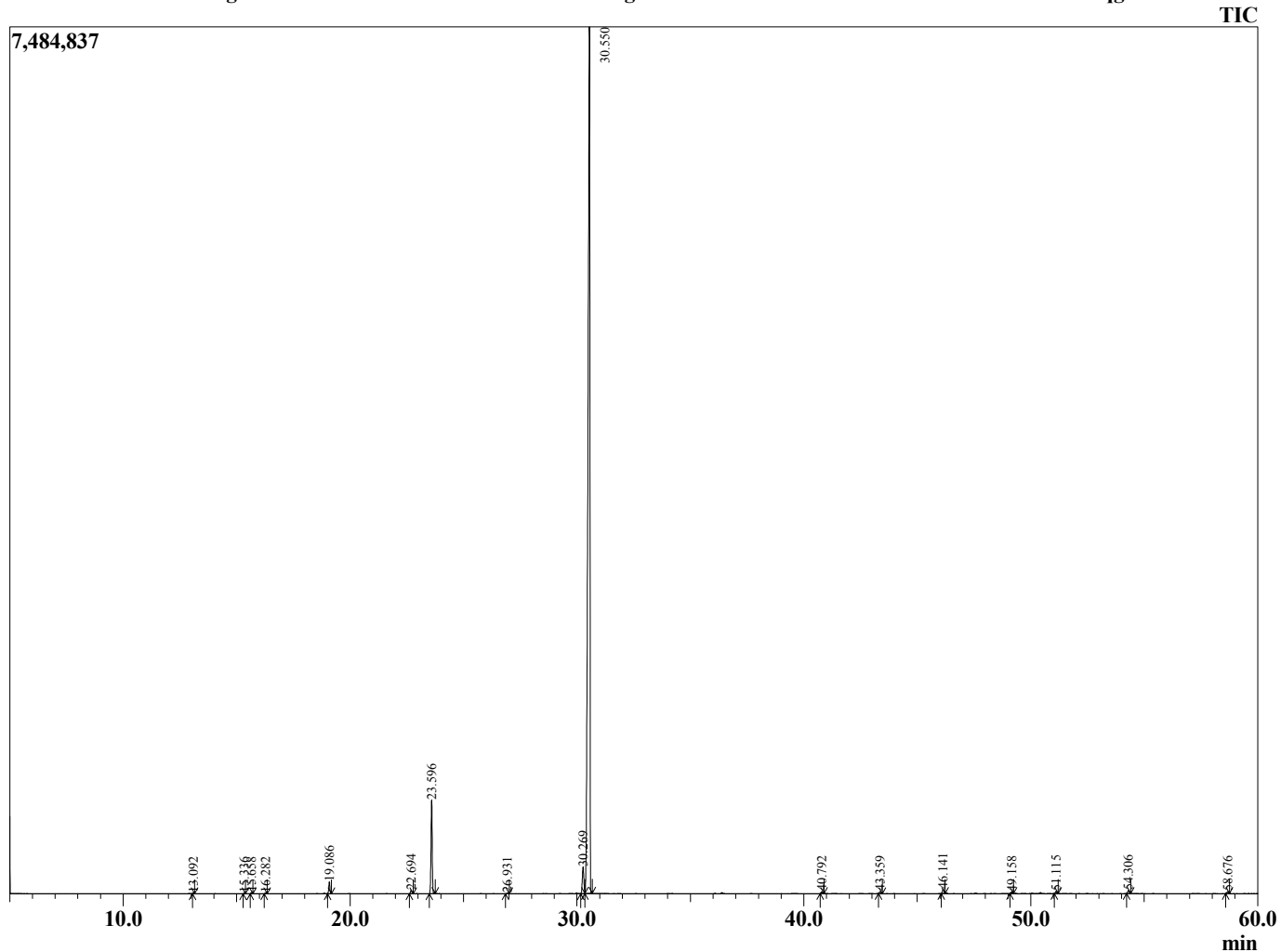
Analyzed by : Tanner Wortham
 Analyzed : 10/21/15 2:54:56 PM
 Sample Type : Essential Oil
 Sample Name : Basil
 Sample ID : B151019H
 Injection Volume : 0.10
 Data File : C:\Users\Tanner Wortham\Google Drive\Academic GC Raw Data\Basil B151019H



Peak Report TIC

R.Time	Name	Area%
13.092	Pinene <alpha>	0.04
15.336	Sabinene	0.03
15.658	Pinene <beta->	0.06
16.282	Myrcene	0.05
19.086	1,8-cineole	0.72
22.694	Unidentified	0.24
23.596	Linalool	6.09
26.931	Camphor	0.04
30.269	Terpineol <alpha>	2.17
30.550	Methyl chavicol	89.27
40.792	Eugenol	0.14
43.359	Elemene <beta>	0.14
46.141	Bergamotene <trans-alpha>	0.35
49.158	Germacrene D	0.11
51.115	Cadinene <gamma->	0.17
54.306	Unidentified	0.24
58.676	Cadinol <tau>	0.14
		100.00

Chromatogram Basil C:\Users\Tanner Wortham\Google Drive\Academic GC Raw Data\Basil B151019H.qgd



Comments:

Typical Ranges of Main Components: